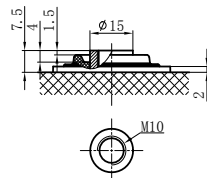
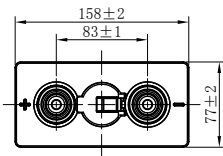
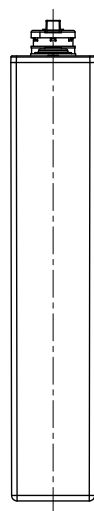
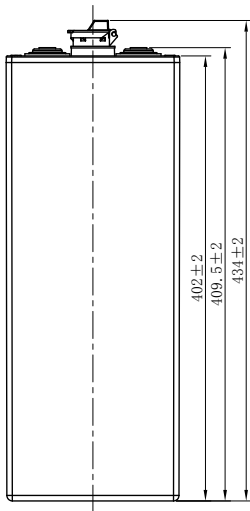


TRACTION BATTERY

4PzB220 (2V220Ah)



CHARACTERISTICS

Item	Specifications	
Rated Voltage	2V	
Capacity@25°C (86°F)	C ₅ , 1.70V/cell	220Ah
Dimension	Length	77mm (3.03inches)
	Width	158mm (6.22inches)
	Container Height	402mm (15.8inches)
	Total Height	434mm (17.1inches)
Approx Weight	Without Electrolyte	10.6kg (23.4lbs)
	With Electrolyte	13.8kg (30.4lbs)
Terminal	M10	
Container Material	PP	
Max. Discharge Current (5s)	8C ₅	
Operating Temp. Range	Discharge	-15~55°C(5~131°F)
	Charge	0~50°C(32~122°F)
	Storage	5~40°C(41~104°F)
Cycle life	≥1200 cycles	
Cycle Use	Initial Charging Current	less than 0.14C ₅
	Voltage	2.60V-2.65V at 25°C(77°F)
	Temp. Coefficient	-5mV/°C
Capacity affected by Temperature	40°C(104°F)	103%
	30°C(86°F)	100%
	0°C(32°F)	86%
Self Discharge	Less than 8% C ₅ after storing 28 days at 20°C, and then a freshening charge is required. For higher temperature, the time interval will be shorter.	

APPLICATIONS

- Forklift
- Traction vehicle
- Transportation vehicle
- Tram
- Bus
- Gymnastic and recreation location

GENERAL FEATURES

- Nonwoven protective gauntlet, better elastic property, less pore size, less electrical resistance and higher air permeability
- Flexible, fully isolated connector prevents any creeping current
- Flip top plugs with special electrolyte level indication
- Automatic refilling plugs are also available (according request)
- Imported microporous catercome rseparator with advanced quality provides higher porosity and lower electrical resistance
- Containers and lids are made of polypropylene (PP)The impact resistance is very good
- Patented terminal sealing construction fully prevents plate growth and electrolyte leakage

TRACTION BATTERY

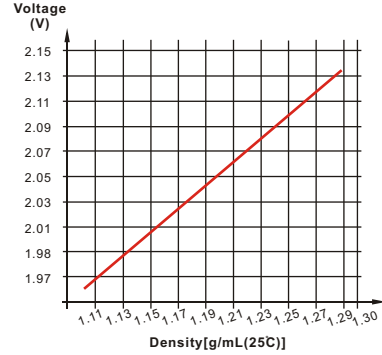
4PzB220 (2V220Ah)



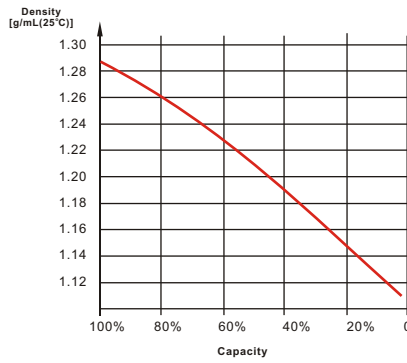
Discharge Characteristics



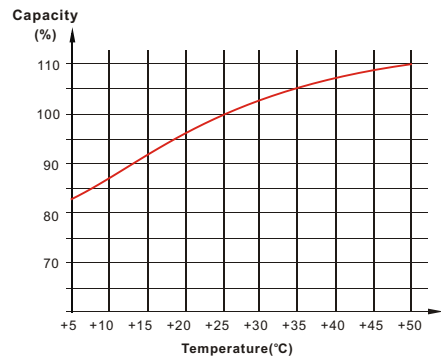
Electrolyte Density in Relation to Voltage



Electrolyte Density in Relation to Capacity



Temperature in Relation to Battery Capacity



Discharge Characteristics



Cycle Life in Relation to Depth of Discharge



Leoch International Technology Ltd.
www.leoch.com

Leoch Batteries Pte Ltd
www.leoch.sg

Leoch Battery Corporation
www.leoch.us

Leoch Europe S.A.
www.leoch.eu