

Specification

Nominal Voltage	2V	
Capacity@30°C (86°F)	810.0Ah@5hr to 1.70V/cell	
Dimensions	Length	157±2mm (6.18inches)
	Width	158±2mm (6.22inches)
	Container Height	554±2mm (21.81inches)
	Total Height (with Terminal)	586±2mm (23.07inches)
Approx Weight	Without Electrolyte : 30.6kg (67.47lbs) With Electrolyte : 42.1kg (92.83lbs)	
Terminal Bolt	M10	
Container Material	PP	
Rated Capacity	810.0 AH/162.0A	(5hr, 1.70V/cell, 30°C/86°F)
	405.0 AH/810.0A	(0.5hr, 1.50V/cell, 30°C/86°F)
Max. Discharge Current	6480A (5s)	
Operating Temp. Range	Discharge : -15~55°C (5~131°F)	
	Charge : 0~50°C (32~122°F)	
	Storage : 5~40°C (41~104°F)	
Cycle life	≥1200 cycles	
Cycle Use	Initial Charging Current : less than 113.4A	
	Voltage	: 2.40V~2.50V at 25°C(77°F)
	Temp. Coefficient	: -5mV/°C
Capacity affected by Temperature	40°C (104°F)	103%
	30°C (86°F)	100%
	0°C (32°F)	86%
Self Discharge	May be less than 8%Cs after storing 28 days at 20°C, and then a freshening charge is required. For higher temperature, the time interval will be shorter.	



Applications

- ◆ forklift
- ◆ traction vehicles
- ◆ transportation vehicles
- ◆ tram cars
- ◆ buses
- ◆ gymnastic and recreation locations.

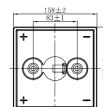
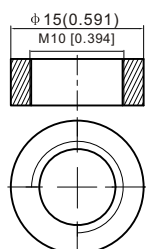
Construction Features

- ◆ Nonwoven protective gauntlet, better elastic property, less pore size, less electrical resistance and higher air permeability.
- ◆ Flexible, fully isolated connector prevents any creeping current.
- ◆ Flip top plugs with special electrolyte level indication.
- ◆ Automatic refilling plugs are also available (according request).
- ◆ Imported microporous catercorner separator with advanced quality provides higher porosity and lower electrical resistance.
- ◆ Containers and lids are made of polypropylene (PP). The impact resistance is very good.
- ◆ Patented terminal sealing construction fully prevents plate growth and electrolyte leakage.

Dimensions

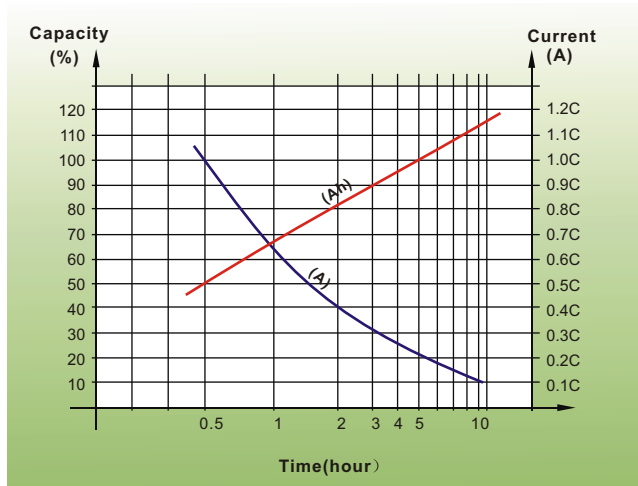
Terminal

Unit: mm [inches]

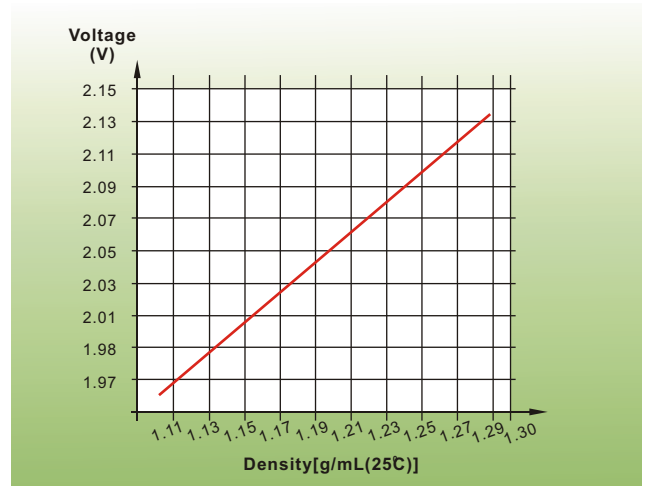


Performance Characteristics

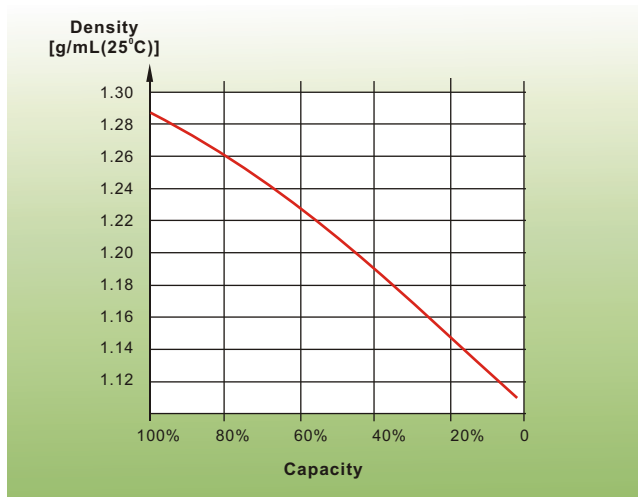
Discharge Characteristics



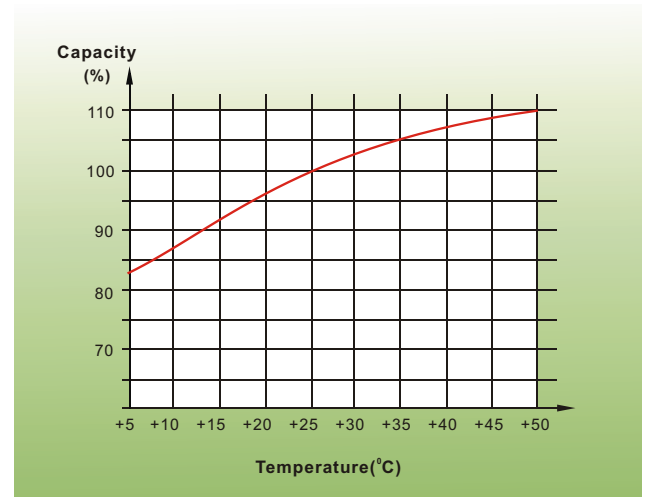
Electrolyte Density in Relation to Voltage



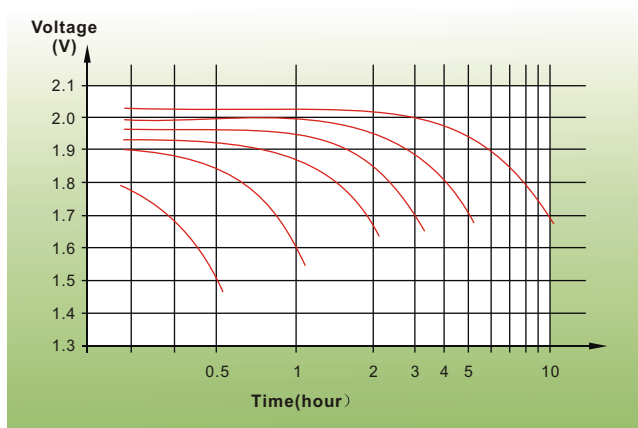
Electrolyte Density in Relation to Capacity



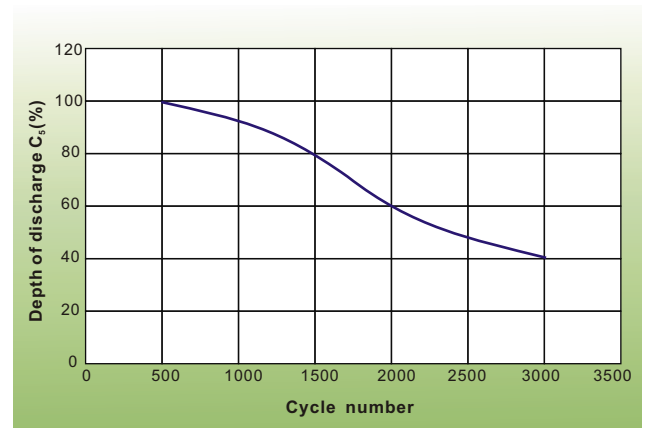
Temperature in Relation to Battery Capacity



Discharge Characteristics



Cycle Life in Relation to Depth of Discharge



Sales Office

China sales office:

Add: 5th Floor, Xinbaohui Bldg., Nanhai Blvd.,
Nanshan, Shenzhen, China. 518052
Tel: +86-755-86036060 (100 lines)
Fax: +86-755-26067269
E-mail: export@leoch.com

North America sales office:

Add: 19751 Descartes, Unit A,
Foothill Ranch, CA 92610, USA
Tel: 949-588-5853
Fax: 949-588-5966
E-mail: sales@leoch.com

Europe sales office:

Add: 9B Wheatstone Park, Waterwells
Business Park, Gloucester, GL2 2AQ. UK.
Tel: +44(0) 1452 729428
Fax: +44 (0)1452-690125
E-mail: Sales.Europe@leoch.com