

Specification

| | | |
|----------------------------------|--|--------------------------------|
| Nominal Voltage | 2V | |
| Capacity@30°C (86°F) | 1000.0Ah@5hr to 1.70V/cell | |
| Dimensions | Length | 173±2mm (6.811inches) |
| | Width | 158±2mm (6.22 inches) |
| | Container Height | 690±2mm (27.17 inches) |
| | Total Height (with Terminal) | 722±2mm (28.43 inches) |
| Approx Weight | Without Electrolyte | 42.5 kg (93.71 lbs) |
| | With Electrolyte | 56.7kg (125.021lbs) |
| Terminal Bolt | M10 | |
| Container Material | PP | |
| Rated Capacity | 1000.0 AH/200.0A | (5hr, 1.70V/cell, 30°C/86°F) |
| | 500.0AH/1000.0A | (0.5hr, 1.50V/cell, 30°C/86°F) |
| Max. Discharge Current | 8000A (5s) | |
| Operating Temp. Range | Discharge : -15~55°C (5~131°F) | |
| | Charge : 0~50°C (32~122°F) | |
| | Storage : 5~40°C (41~104°F) | |
| Cycle life | ≥1200 cycles | |
| Cycle Use | Initial Charging Current : less than 140.0A | |
| | Voltage | : 2.40V~2.50V at 25°C(77°F) |
| | Temp. Coefficient | : -5mV/°C |
| Capacity affected by Temperature | 40°C (104°F) | 103% |
| | 30°C (86°F) | 100% |
| | 0°C (32°F) | 86% |
| Self Discharge | Less than 8 %C ₅ after storing 28 days at 20°C, and then a freshening charge is required. For higher temperature, the time interval will be shorter. | |

Applications

- ◆ forklift
- ◆ traction vehicles
- ◆ transportation vehicles
- ◆ tram cars
- ◆ buses
- ◆ gymnastic and recreation locations.

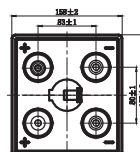
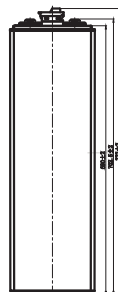
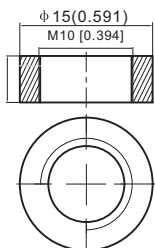
Construction Features

- ◆ Nonwoven protective gauntlet, better elastic property, less pore size, less electrical resistance and higher air permeability.
- ◆ Flexible, fully isolated connector prevents any creeping current.
- ◆ Flip top plugs with special electrolyte level indication.
- ◆ Automatic refilling plugs are also available (according request).
- ◆ Imported microporous catercorner separator with advanced quality provides higher porosity and lower electrical resistance.
- ◆ Containers and lids are made of polypropylene (PP). The impact resistance is very good.
- ◆ Patented terminal sealing construction fully prevents plate growth and electrolyte leakage.

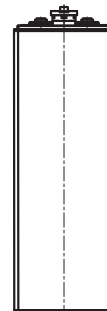
Dimensions

Terminal

Unit: mm [inches]

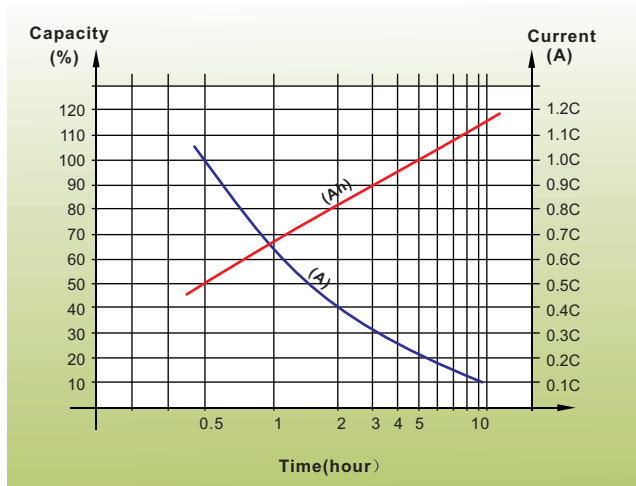


Terminal type: M10 bolt

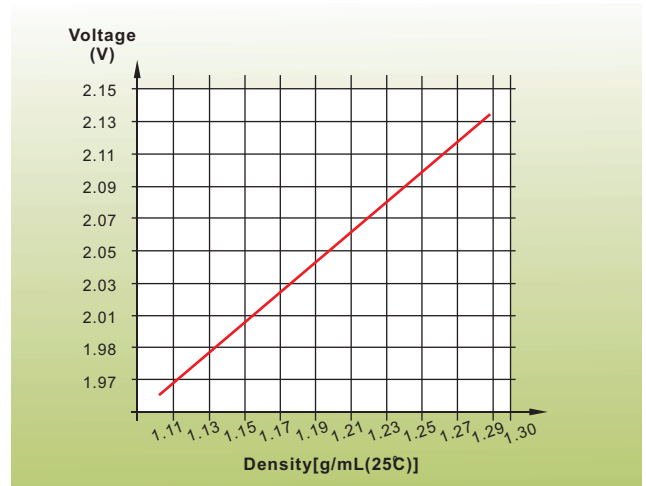


Performance Characteristics

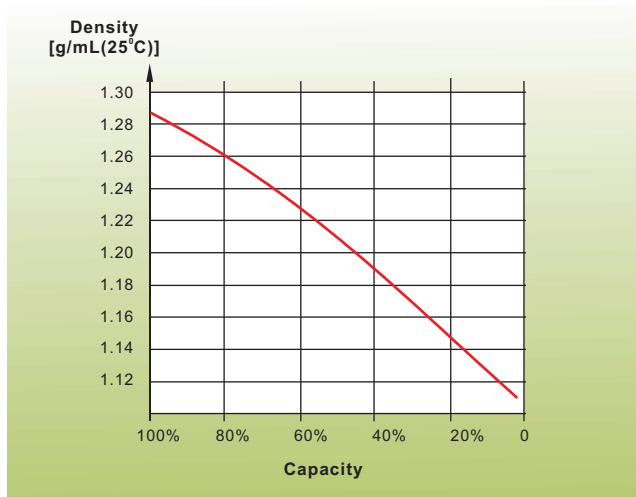
Discharge Characteristics



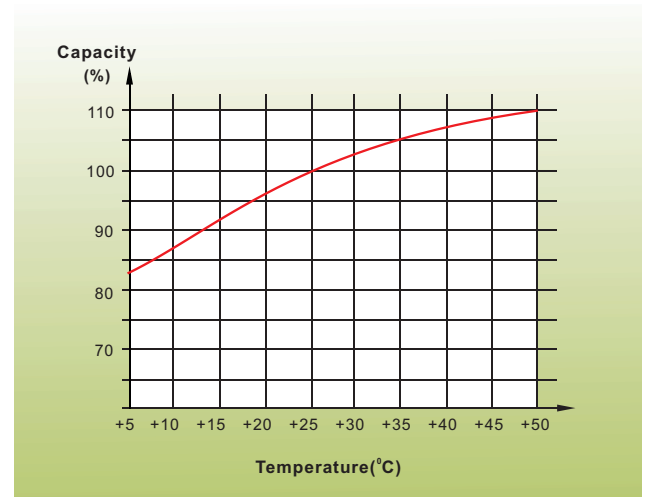
Electrolyte Density in Relation to Voltage



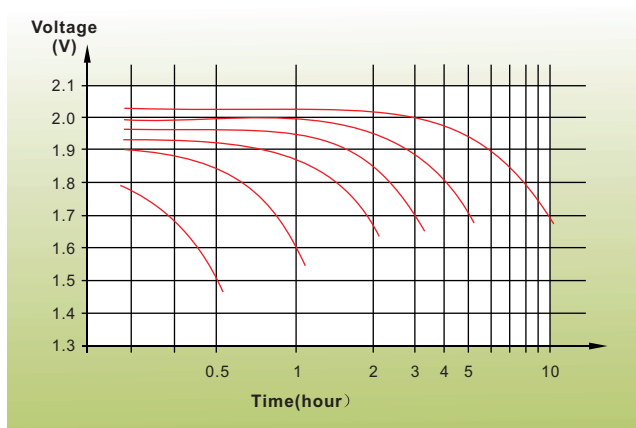
Electrolyte Density in Relation to Capacity



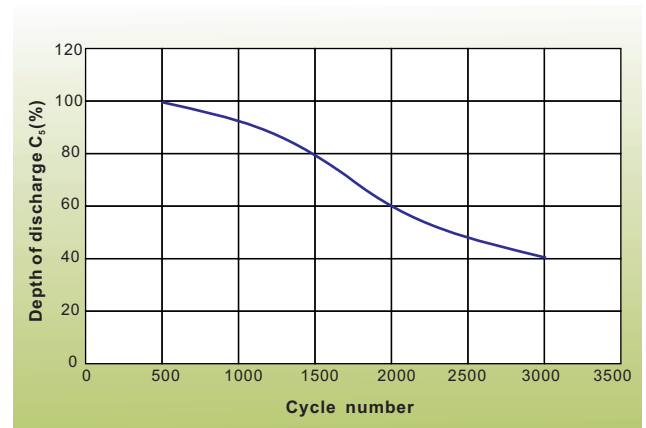
Temperature in Relation to Battery Capacity



Discharge Characteristics



Cycle Life in Relation to Depth of Discharge



Sales Office

China sales office:

Add: 5th Floor, Xinbaohui Bldg., Nanshan Blvd.,
Nanshan, Shenzhen, China. 518052
Tel: +86-755-86036060 (100 lines)
Fax: +86-755-26067269
E-mail: export@leoch.com

North America sales office:

Add: 19751 Descartes, Unit A,
Foothill Ranch, CA 92610, USA
Tel: 949-588-5853
Fax: 949-588-5966
E-mail: sales@leoch.com

Europe sales office:

Add: 12C Wheatstone Park, Waterwells
Business Park, Gloucester, GL2 2AQ. UK.
Tel: +44(0) 1452 751016
Fax: +44 (0)1452-690125
E-mail: Sales.Europe@leoch.com