

Specification

Nominal Voltage	2V	
Capacity@30°C (86°F)	275.0Ah@5hr to 1.70V/cell	
Dimensions	Length	93±2mm (3.66inches)
	Width	158±2mm (6.22 inches)
	Container Height	402±2mm (15.83 inches)
	Total Height (with Terminal)	434±2mm (17.09 inches)
Approx Weight	Without Electrolyte	12.9 kg (28.44 lbs)
	With Electrolyte	16.8 kg (37.041lbs)
Terminal Bolt	M10	
Container Material	PP	
Rated Capacity	275.0 AH/55.0A	(5hr, 1.70V/cell, 30°C/86°F)
	137.5AH/275.0A	(0.5hr, 1.50V/cell, 30°C/86°F)
Max. Discharge Current	2200A (5s)	
Operating Temp. Range	Discharge	-15~55°C (5~131°F)
	Charge	0~50°C (32~122°F)
	Storage	5~40°C (41~104°F)
Cycle life	≥1200 cycles	
Cycle Use	Initial Charging Current	less than 38.5A
	Voltage	2.40V~2.50V at 25°C(77°F)
	Temp. Coefficient	-5mV/°C
Capacity affected by Temperature	40°C (104°F)	103%
	30°C (86°F)	100%
	0°C (32°F)	86%
Self Discharge	Less than 8 %C ₅ after storing 28 days at 20°C, and then a freshening charge is required. For higher temperature, the time interval will be shorter.	



Applications

- ◆ forklift
- ◆ traction vehicles
- ◆ transportation vehicles
- ◆ tram cars
- ◆ buses
- ◆ gymnastic and recreation locations.

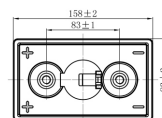
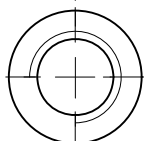
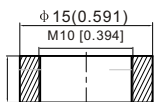
Construction Features

- ◆ Nonwoven protective gauntlet, better elastic property, less pore size, less electrical resistance and higher air permeability.
- ◆ Flexible, fully isolated connector prevents any creeping current.
- ◆ Flip top plugs with special electrolyte level indication.
- ◆ Automatic refilling plugs are also available (according request).
- ◆ Imported microporous catercorner separator with advanced quality provides higher porosity and lower electrical resistance.
- ◆ Containers and lids are made of polypropylene (PP). The impact resistance is very good.
- ◆ Patented terminal sealing construction fully prevents plate growth and electrolyte leakage.

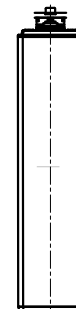
Dimensions

Terminal

Unit: mm [inches]

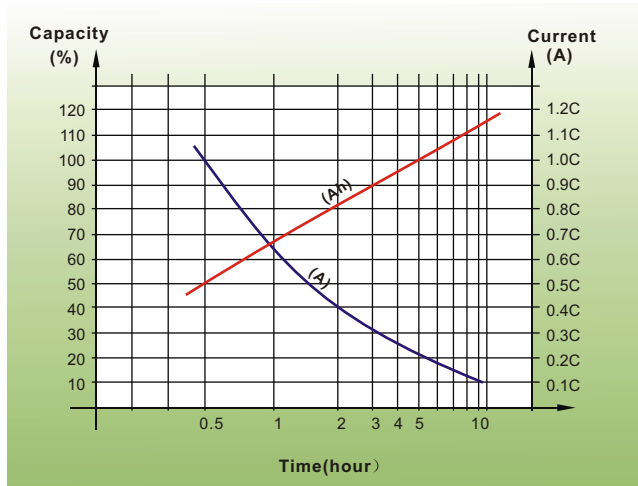


Terminal type: M10 bolt

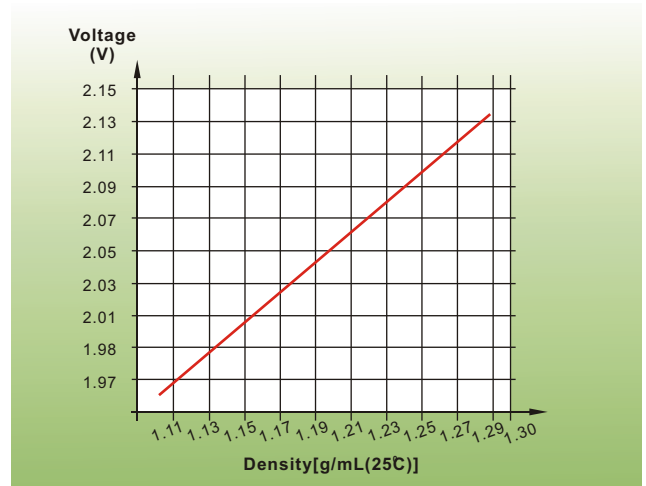


Performance Characteristics

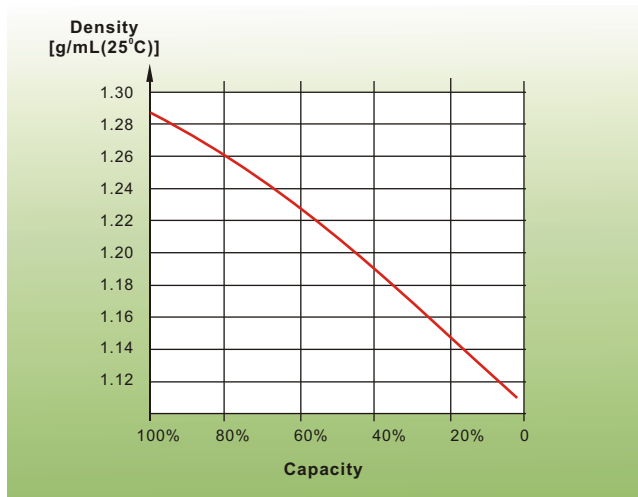
Discharge Characteristics



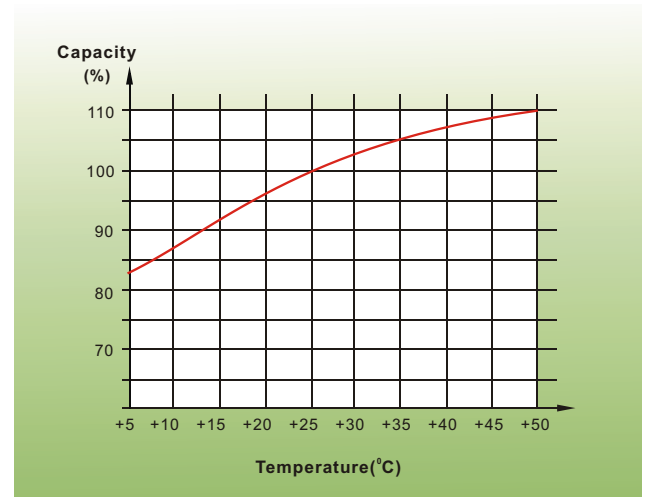
Electrolyte Density in Relation to Voltage



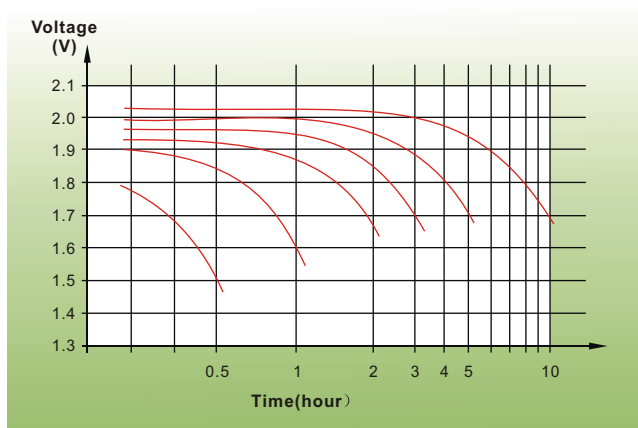
Electrolyte Density in Relation to Capacity



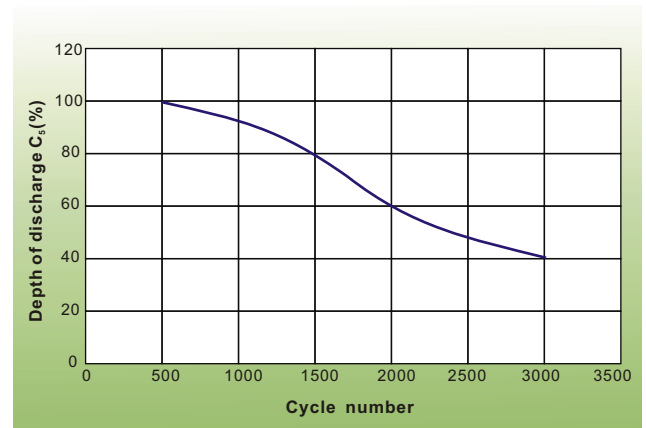
Temperature in Relation to Battery Capacity



Discharge Characteristics



Cycle Life in Relation to Depth of Discharge



Sales Office

China sales office:

Add: 5th Floor, Xinbaohui Bldg., Nanshan, Shenzhen, China. 518052
 Tel: +86-755-86036060 (100 lines)
 Fax: +86-755-26067269
 E-mail: export@leoch.com

North America sales office:

Add: 19751 Descartes, Unit A, Foothill Ranch, CA 92610, USA
 Tel: 949-588-5853
 Fax: 949-588-5966
 E-mail: sales@leoch.com

Europe sales office:

Add: 12C Wheatstone Park, Waterwells Business Park, Gloucester, GL2 2AQ. UK.
 Tel: +44(0) 1452 751016
 Fax: +44 (0)1452-690125
 E-mail: Sales.Europe@leoch.com