

### Specification

Nominal Voltage	2V	
Capacity@30°C (86°F)	480.0Ah@5hr to 1.70V/cell	
Dimensions	Length	109±2mm (4.291inches)
	Width	158±2mm (6.22 inches)
	Container Height	554±2mm (21.87 inches)
	Total Height (with Terminal)	586±2mm (23.07 inches)
Approx Weight	Without Electrolyte : 21.0 kg (46.31 lbs)	
	With Electrolyte : 27.8kg (61.301lbs)	
Terminal Bolt	M10	
Container Material	PP	
Rated Capacity	480.0 AH/96.0A	(5hr, 1.70V/cell, 30°C/86°F)
	240.0AH/480.0A	(0.5hr, 1.50V/cell, 30°C/86°F)
Max. Discharge Current	3840A (5s)	
Operating Temp. Range	Discharge : -15~55°C (5~131°F)	
	Charge : 0~50°C (32~122°F)	
	Storage : 5~40°C (41~104°F)	
Cycle life	≥1200 cycles	
Cycle Use	Initial Charging Current : less than 67.2A	
	Voltage	: 2.40V~2.50V at 25°C(77°F)
	Temp. Coefficient	: -5mV/°C
Capacity affected by Temperature	40°C (104°F)	103%
	30°C (86°F)	100%
	0°C (32°F)	86%
Self Discharge	Less than 8 %C <sub>5</sub> after storing 28 days at 20°C, and then a freshening charge is required. For higher temperature, the time interval will be shorter.	



### Applications

- ◆ forklift
- ◆ traction vehicles
- ◆ transportation vehicles
- ◆ tram cars
- ◆ buses
- ◆ gymnastic and recreation locations.

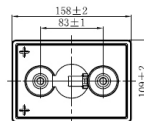
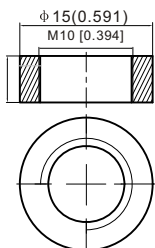
### Construction Features

- ◆ Nonwoven protective gauntlet, better elastic property, less pore size, less electrical resistance and higher air permeability.
- ◆ Flexible, fully isolated connector prevents any creeping current.
- ◆ Flip top plugs with special electrolyte level indication.
- ◆ Automatic refilling plugs are also available (according request).
- ◆ Imported microporous catercorner separator with advanced quality provides higher porosity and lower electrical resistance.
- ◆ Containers and lids are made of polypropylene (PP). The impact resistance is very good.
- ◆ Patented terminal sealing construction fully prevents plate growth and electrolyte leakage.

### Dimensions

#### Terminal

Unit: mm [inches]



Terminal type: M10 bolt



# Performance Characteristics

## Discharge Characteristics



## Electrolyte Density in Relation to Voltage



## Electrolyte Density in Relation to Capacity



## Temperature in Relation to Battery Capacity



## Discharge Characteristics



## Cycle Life in Relation to Depth of Discharge



## Sales Office

### China sales office:

Add: 5th Floor, Xinbaohui Bldg., Nanshan Blvd.,  
Nanshan, Shenzhen, China. 518052  
Tel: +86-755-86036060 (100 lines)  
Fax: +86-755-26067269  
E-mail: export@leoch.com

### North America sales office:

Add: 19751 Descartes, Unit A,  
Foothill Ranch, CA 92610, USA  
Tel: 949-588-5853  
Fax: 949-588-5966  
E-mail: sales@leoch.com

### Europe sales office:

Add: 12C Wheatstone Park, Waterwells  
Business Park, Gloucester, GL2 2AQ. UK.  
Tel: +44(0) 1452 751016  
Fax: +44 (0)1452-690125  
E-mail: Sales.Europe@leoch.com