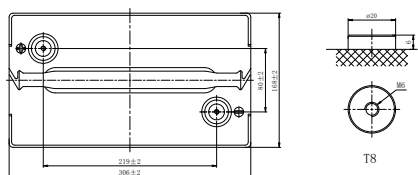
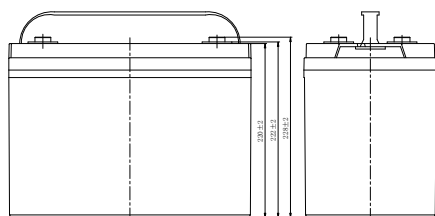


LPL SERIES-LONG LIFE STANDBY

LPL6-180 (6V180Ah)



CHARACTERISTICS

Item	Specifications	
Rated Voltage	6V	
Nominal Capacity (25°C)	C ₁₀ , 1.80V/cell	180Ah
Dimension	Length	306mm (12.0inches)
	Width	168mm (6.61inches)
	Container Height	222mm (8.74inches)
	Total Height	228mm (8.98inches)
Approx Weight	30.3kg (66.8lbs)	
Terminal	T8(M6)	
Container Material	ABS (UL94 HB or V-0 optional)	
Short-circuit current	3600A	
Internal Resistance (25°C)	Approx 1.5 mΩ (Fully charged)	
Operating Temp. Range	Discharge	-15~50°C (5~122°F)
	Charge	-20~40°C (-4~104°F)
	Storage	-15~40°C (5~104°F)
Nominal Operating Temp. Range	25±3°C (77±5°F)	
Max.Charging Current (25°C)	0.3C	
Charge voltage (25°C)	Standby Use	Cycle Use
	2.25-2.30V/cell	2.35-2.40V/cell
Temp. Coefficient	-3mV/cell/°C	
	-5mV/cell/°C	
Effect of temp. to Capacity	40°C (104°F)	103%
	25°C (77°F)	100%
	0°C (32°F)	86%
Self Discharge	≤3% per month at 25°C (77°F). LPL series batteries may be stored up to 6 months at 25°C (77°F) and then a freshening charge is required. For higher temperatures the time interval will be shorter.	

DISCHARGE TABLE

Constant Current Discharge (Amperes) at 25°C (77°F)														
F.V/Time	10min	15min	20min	30min	45min	1h	2h	3h	4h	5h	6h	8h	10h	20h
1.85V/cell	262.3	227.4	178.8	163.9	122.4	101.6	61.9	45.4	35.6	30.9	26.5	21.0	17.4	9.21
1.80V/cell	297.6	257.6	202.2	178.5	129.6	105.2	63.9	49.3	38.0	32.5	27.8	22.0	18.0	9.54
1.75V/cell	322.7	278.9	218.2	182.2	134.3	110.4	67.3	50.2	38.7	33.1	28.3	22.2	18.4	9.64
1.70V/cell	344.2	296.2	231.5	185.8	137.0	112.6	68.6	51.2	39.4	33.6	28.7	22.5	18.5	9.74
1.67V/cell	355.1	304.8	237.7	188.5	139.0	114.3	69.6	51.7	40.0	34.3	29.2	22.8	18.8	9.86
1.60V/cell	367.2	314.3	243.8	191.3	141.0	115.9	70.6	52.2	40.5	34.8	29.6	23.1	19.0	10.0

Constant Power Discharge (Watts/cell) at 25°C (77°F)														
F.V/Time	10min	15min	20min	30min	45min	1h	2h	3h	4h	5h	6h	8h	10h	20h
1.85V/cell	493.4	430.6	340.1	313.3	235.4	196.4	120.4	88.7	69.8	60.9	52.3	41.6	34.5	18.3
1.80V/cell	551.9	481.5	380.4	338.4	247.7	202.4	123.7	95.8	74.3	63.8	54.8	43.6	36.1	19.0
1.75V/cell	588.9	514.0	406.0	342.7	255.2	211.4	129.7	97.5	75.4	64.7	55.4	43.7	36.4	19.1
1.70V/cell	619.1	540.3	426.9	346.6	258.5	214.5	131.7	99.0	76.5	65.5	56.1	44.4	36.8	19.3
1.67V/cell	629.3	549.1	433.9	349.1	260.6	216.4	133.1	99.5	77.4	66.7	57.0	44.9	37.2	19.5
1.60V/cell	637.7	556.7	439.9	350.6	262.2	218.0	134.2	99.9	77.9	67.3	57.6	45.4	37.5	19.7

LPL SERIES-LONG LIFE STANDBY

LPL6-180 (6V180Ah)



APPLICATIONS

- UPS and EPS
- Emergency light
- Railway signal and aircraft signal system
- Marine and power stations
- Alarm and security system
- Electronic apparatus and equipment
- Communication power supply, DC power supply

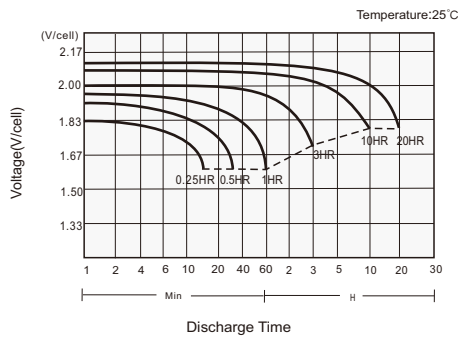
GENERAL FEATURES

- 12 years design life (25°C)
- Lead calcium alloy, sealed design, no watering required
- Puncture resistant micro-porous glass mat separators extend life
- Unique technology optimizes power capacity, cell consistency, and long-term reliability
- Designed for a wide range of applications

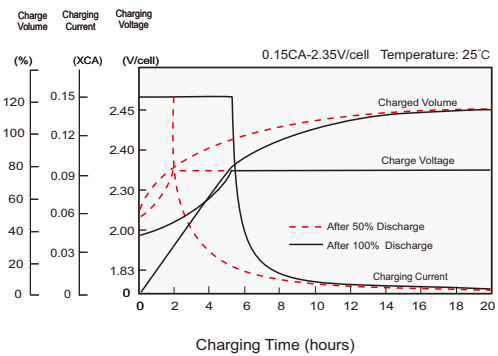
STANDARDS

- Compliance with IEC 60896 standards, EU Battery Directive
- UL, CE Approved
- Manufactured in Leoch@IATF 16949, ISO 45001, ISO 9001 and ISO 14001 certified production facilities

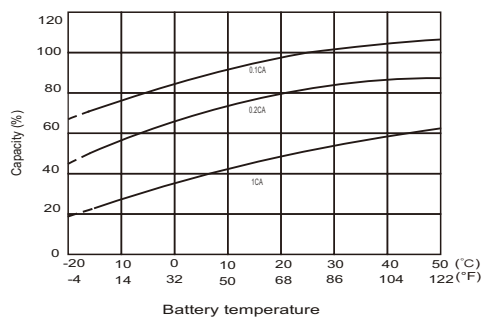
Discharge Characteristics



Charging Characteristics



Effects of Temperature on Capacity



Self Discharge Characteristics

