

LPG SERIES-GEL Battery

LPG12-200HS (12V200AH)

Specification

Nominal Voltage	12V	
Nominal Capacity(10HR)	200.0AH	
Dimension	Length	522±2mm (20.55 inches)
	Width	240±2mm (9.45 inches)
	Container Height	218±2mm (8.58 inches)
	Total Height (with Terminal)	224±2mm (8.81 inches)
Approx Weight	Approx 64.5 kg	
Terminal	T11	
Container Material	ABS	
Rated Capacity	214.0 AH/10.7A	(20hr, 1.80V/cell, 25°C/77°F)
	200.0 AH/10.0A	(10hr, 1.80V/cell, 25°C/77°F)
	192.5 A H/38.5A	(5hr, 1.75V/cell, 25°C/77°F)
	161.4 AH/54.7A	(3hr, 1.70V/cell, 25°C/77°F)
	124.0 AH/124.0A	(1hr, 1.60V/cell, 25°C/77°F)
Short circuit Current	5400A (5s)	
Internal Resistance	Approx 2.88 m Ω	
Operating Temp. Range	Discharge : -20~55°C (-4~131°F)	
	Charge : 0~40°C (32~104°F)	
	Storage : -20~50°C (-4~122°F)	
Nominal Operating Temp. Range	25±3°C (77±5°F)	
Cycle Use	Initial Charging Current less than 60.0A. Voltage	
	14.1V~14.4V at 25°C(77°F)Temp. Coefficient -30mV/°C	
Standby Use	No limit on Initial Charging Current Voltage	
	13.5V~13.8V at 25°C(77°F)Temp. Coefficient -20mV/°C	
Capacity affected by Temperature	40°C (104°F)	103%
	25°C (77°F)	100%
	0°C (32°F)	86%
Self Discharge	Leoch LPG series batteries may be stored for up to 6 months at 25°C(77°F) and then a freshening charge is required. For higher temperatures the time interval will be shorter.	



Applications

- ◆ Telecommunications
- ◆ Solar system
- ◆ Wind power system
- ◆ Engine starting
- ◆ Wheelchair
- ◆ Floor cleaning machines
- ◆ Golf trolley
- ◆ Boats



Constant Current Discharge (Amperes) at 25 °C (77°F)

F.V/Time	10min	15min	20min	30min	45min	1h	2h	3h	4h	5h	6h	8h	10h	20h
1.85V/cell	234.0	196.8	174.6	144.8	111.7	95.6	61.9	46.5	38.1	35.5	28.1	24.9	20.8	10.3
1.80V/cell	267.8	221.0	193.0	157.3	120.5	106.0	66.5	50.0	40.5	37.6	29.8	26.2	20.0	10.7
1.75V/cell	304.1	249.1	213.3	170.9	131.5	110.0	69.2	52.0	41.9	38.5	30.7	27.1	21.9	11.0
1.70V/cell	343.5	276.3	235.5	186.6	141.6	116.4	72.9	54.7	43.8	40.7	32.2	28.3	22.8	11.3
1.67V/cell	368.8	295.9	250.5	196.9	149.9	120.4	75.6	56.9	45.5	42.0	33.3	29.2	23.5	11.6
1.60V/cell	405.8	324.1	272.1	210.1	155.7	124.0	77.5	58.4	46.5	42.9	34.0	29.7	24.1	11.8

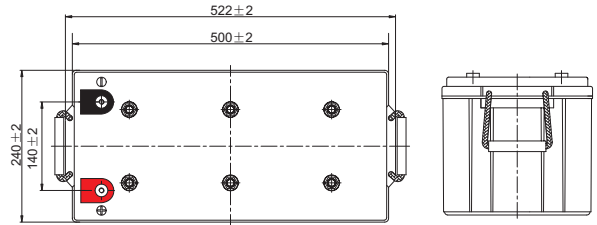
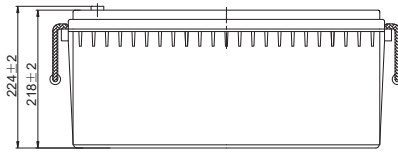
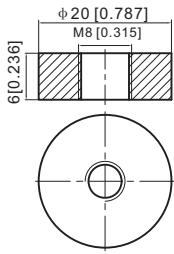
Constant Power Discharge (Watts/cell) at 25 °C (77°F)

F.V/Time	10min	15min	20min	30min	45min	1h	2h	3h	4h	5h	6h	8h	10h	20h
1.85V/cell	436.9	371.2	332.6	278.9	217.0	186.3	121.4	91.7	75.3	70.2	55.8	49.7	41.4	20.7
1.80V/cell	494.1	411.2	362.4	298.3	232.3	195.6	129.7	97.9	79.6	74.0	58.9	52.2	42.1	21.4
1.75V/cell	552.3	457.9	396.7	321.5	251.0	212.3	134.4	101.4	82.1	75.6	60.6	53.7	43.8	21.9
1.70V/cell	609.8	501.0	434.6	349.1	269.3	223.9	141.3	106.6	85.6	79.8	63.4	55.9	45.5	22.4
1.67V/cell	648.9	532.3	458.9	365.4	282.5	230.0	145.6	110.4	88.6	82.1	65.4	57.7	46.7	23.1
1.60V/cell	697.8	573.5	493.2	387.2	292.0	235.6	148.6	112.7	90.3	83.8	66.5	58.6	47.6	23.4

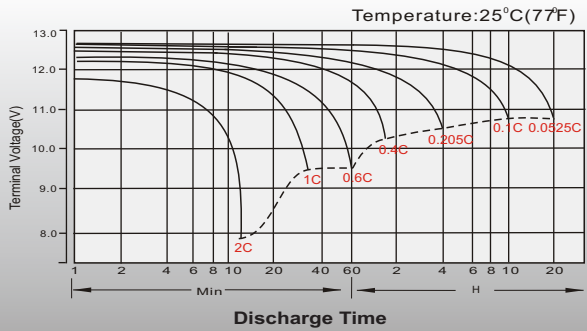
Dimensions

T11 Terminal

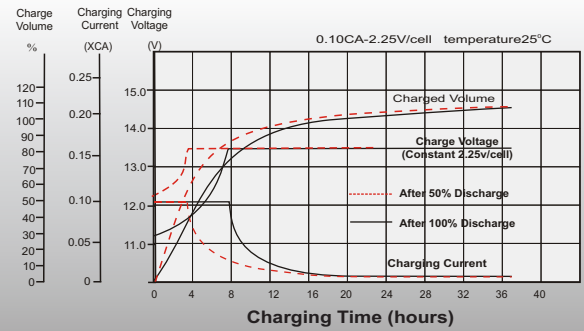
Unit: mm [inches]



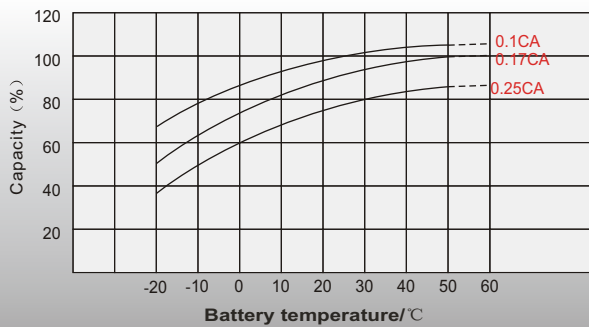
Discharge Characteristics



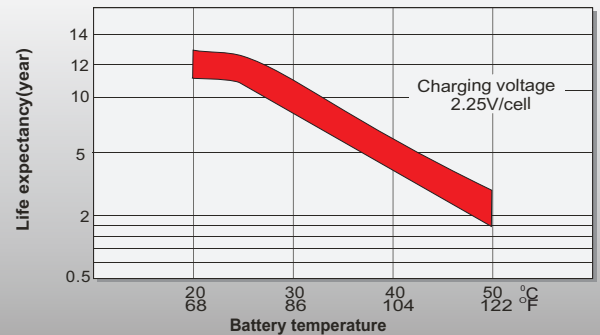
Float Charging Characteristics



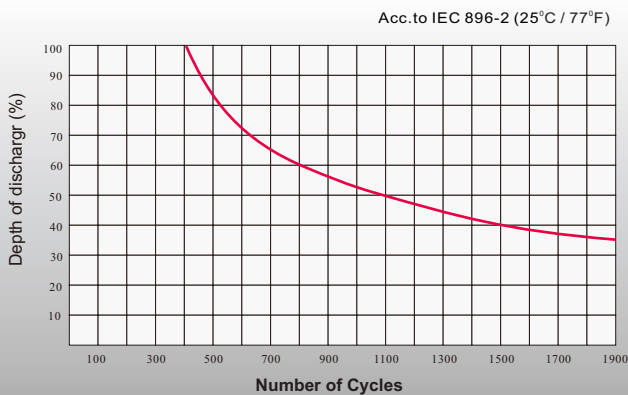
Temperature Effects in Relation to Battery Capacity



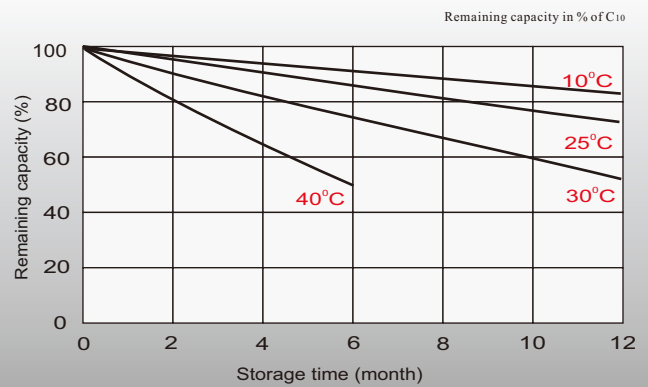
Effect of Temperature on Long Term Float Life



Cycle Life in Relation to Depth of Discharge



General Relation of Capacity VS. Storage Time



Sales Office

China sales office:

Add: 5th Floor, Xinbaohui Bldg., Nanhai Blvd., Nanshan, Shenzhen, China. 518052
Tel: +86-755-86036060 (100 lines)
Fax: +86-755-26067269
E-mail: export@leoch.com
Http://www.leoch.com

North America sales office:

Add: 19751 Descartes, Unit A, Foothill Ranch, CA 92610, USA
Tel: 949-588-5853
Fax: 949-588-5966
E-mail: sales@leoch.us
Http://www.leoch.us

Europe sales office:

Add: 9B Wheatstone Park, Waterwells Business Park, Gloucester, GL2 2AQ. UK.
Tel: +44(0) 01452 729428
Fax: +44 (0)1452-690125
E-mail: Sales.Europe@leoch.com

Singapore sales office:

Add: No. 53, Ubi Avenue 1, #03-21 Paya Ubi Industrial Park, Singapore 408934
Tel: +65 6841 6629
E-mail: sales.sg@leoch.com

HongKong sales office:

Add: Unit 3910, 39/F, Cable TV Tower, No. 9 Hoi Shing Road, Tsuen Wan, NT. H.K.
Tel: +852 3578 6666
E-mail: sales.hk@leoch.com