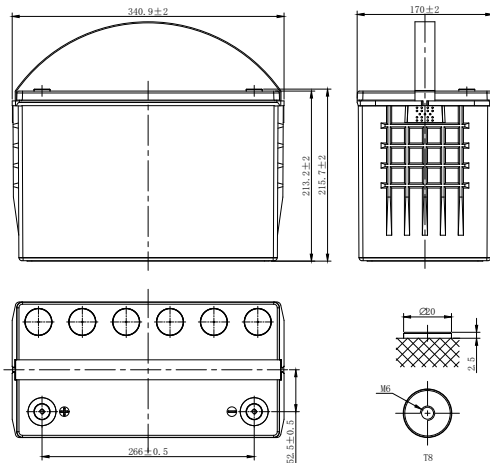


HXP-PURE LEAD HIGH RATE

HXP12-400 (12V400W)



CHARACTERISTICS

Item	Specifications	
Rated Voltage	12V	
Nominal Rate (25°C)	$W_{15}, 1.67V/cell$	424.3W/cell
Nominal Capacity (25°C)	$C_{10}, 1.80V/cell$	100Ah
Dimension	Length	340.9mm (13.4inches)
	Width	170mm (6.69inches)
	Container Height	213.2mm (8.39inches)
	Total Height	215.7mm (8.49inches)
Approx Weight	33.2kg (73.2lbs)	
Terminal	T8(M6)	
Container Material	PC-ABS (UL94 V-0)	
Short-circuit current	2200.0A	
Internal Resistance (25°C)	Approx 3.7 mΩ (Fully charged)	
Operating Temp. Range	Discharge	-40~65°C (-40~149°F)
	Charge	-20~54°C (-4~129°F)
	Storage	-20~50°C (-4~122°F)
Nominal Operating Temp. Range	25±3°C (77±5°F)	
Max.Charging Current (25°C)	0.3C	
Charge voltage (25°C)	Standby Use	Equalization Use
	2.27±0.02V/cell	2.35-2.40V/cell
Temp. Coefficient	-3mV/cell/°C	-4mV/cell/°C
	40°C (104°F)	103%
Effect of temp. to Capacity	25°C (77°F)	100%
	0°C (32°F)	86%
	Self Discharge	HXP series batteries can be stored up to 24 months at 25°C(77°F), For higher temperatures the time interval will be shorter.Battery needs to be given a freshening charge when the OCV approach 2.10V/cell or when the maximum storage time is reached, whichever occurs first.

DISCHARGE TABLE

Constant Current Discharge (Amperes) at 25°C (77°F)															
F.V/Time	5min	10min	15min	20min	30min	45min	1h	2h	3h	4h	5h	6h	8h	10h	20h
1.85V/cell	252.0	195.0	169.4	140.2	108.0	78.5	58.9	34.1	25.2	20.2	16.9	14.7	11.5	9.68	4.98
1.80V/cell	299.6	222.1	187.6	152.9	115.6	82.8	62.0	35.5	26.2	21.0	17.6	15.1	11.8	10.0	5.12
1.75V/cell	337.0	244.2	202.1	162.6	122.6	86.6	65.6	36.8	27.0	21.6	18.0	15.5	12.1	10.2	5.24
1.70V/cell	368.4	259.9	213.0	170.5	127.5	90.3	68.3	38.2	27.8	22.0	18.3	15.8	12.3	10.2	5.30
1.67V/cell	403.0	275.5	223.8	172.7	130.2	91.6	70.0	39.3	28.6	22.7	18.8	16.2	12.6	10.3	5.34
1.60V/cell	422.4	287.1	230.6	182.7	134.6	94.6	72.9	40.0	29.1	23.0	19.0	16.4	12.7	10.4	5.37
Constant Power Discharge (Watts/cell) at 25°C (77°F)															
F.V/Time	5min	10min	15min	20min	30min	45min	1h	2h	3h	4h	5h	6h	8h	10h	20h
1.85V/cell	493.3	382.7	333.3	277.1	214.7	156.9	118.0	68.6	50.8	40.9	34.5	29.9	23.6	19.5	10.3
1.80V/cell	580.1	431.2	365.4	299.5	227.8	164.0	123.4	70.9	52.6	42.2	35.6	30.7	24.1	19.8	10.5
1.75V/cell	645.9	469.6	390.1	315.6	239.4	170.2	129.6	73.0	53.8	43.2	36.2	31.3	24.6	20.2	10.7
1.70V/cell	698.2	494.2	406.3	327.5	246.4	175.9	134.0	75.2	55.2	43.9	36.7	31.6	24.8	20.4	10.8
1.67V/cell	757.4	519.9	424.3	329.7	250.3	177.3	136.4	77.0	56.3	44.8	37.5	32.2	25.2	20.6	10.8
1.60V/cell	801.0	535.9	432.6	345.4	256.3	181.4	140.8	77.6	56.9	45.1	37.6	32.4	25.2	20.6	10.9

HXP-PURE LEAD HIGH RATE

HXP12-400 (12V400W)



APPLICATIONS

- Data Centre
- UPS high power backup supply
- Emergency power supply
- Starting system
- Power tools

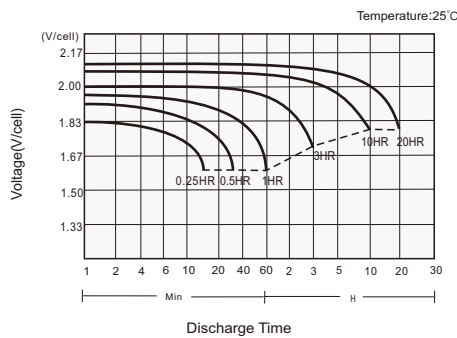
GENERAL FEATURES

- 15 years design life (25°C)
- Utilizes TPPL technology, thin positive grids and unique manufacturing process to maximize corrosion resistance and service life while increasing energy density
- Specifically designed for high-rate discharge applications
- Wide Wpc range of front and top terminal monoblocs
- UL 94 V-0 Case and cover heat sealed and 100% tested to prevent leaks

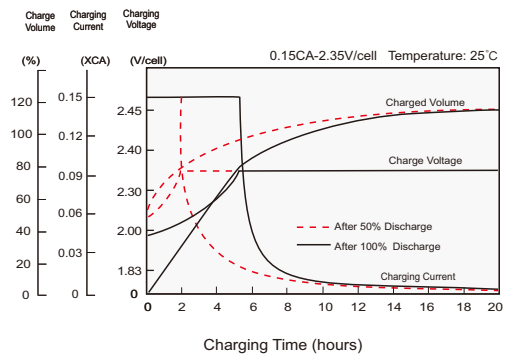
STANDARDS

- Compliance with IEC 60896 standards
- Classified as "Very Long Life" according to Eurobat
- Manufactured in Leoch®IATF 16949, ISO 45001, ISO 9001 and ISO 14001 certified production facilities

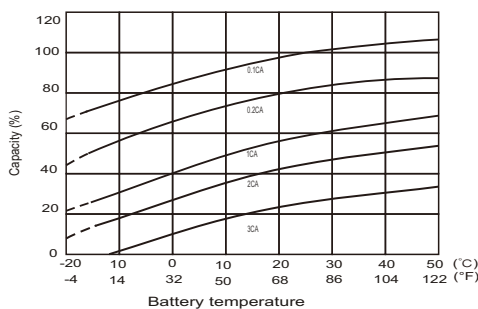
Discharge Characteristics



Charging Characteristics



Effects of Temperature on Capacity



Self Discharge Characteristics

