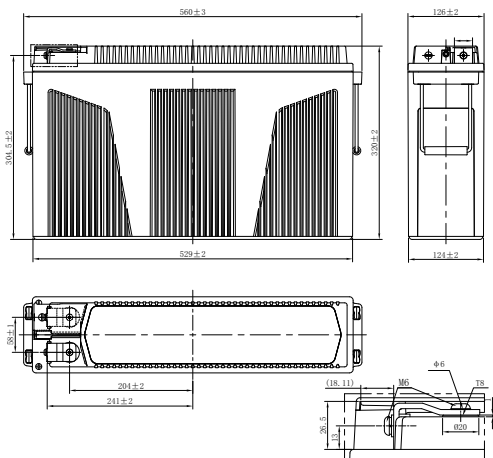
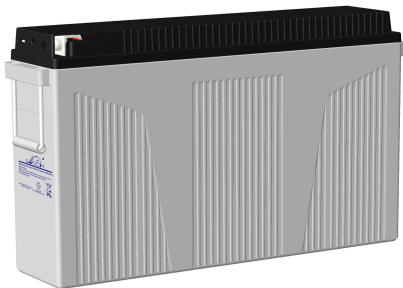


LPF SERIES-FRONT TERMINAL

LPF12-190 (12V190Ah)



CHARACTERISTICS

Item	Specifications	
Rated Voltage	12V	
Nominal Capacity (25°C)	C ₁₀ , 1.80V/cell	190Ah
Dimension	Length	560mm (22.0inches)
	Width	126mm (4.96inches)
	Container Height	320mm (12.6inches)
	Total Height	320mm (12.6inches)
Approx Weight	57.0kg (125.7lbs)	
Terminal	T8(M6)	
Container Material	ABS (UL94 HB or V-0 optional)	
Short-circuit current	1710A	
Internal Resistance (25°C)	Approx 4 mΩ (Fully charged)	
Operating Temp. Range	Discharge	-15~50°C (5~122°F)
	Charge	-20~40°C (-4~104°F)
	Storage	-15~40°C (5~104°F)
Nominal Operating Temp. Range	25±3°C (77±5°F)	
Max.Charging Current (25°C)	0.3C	
Charge voltage (25°C)	Float Charge	Equalization Charge
	2.25-2.30V/cell	2.35-2.40V/cell
Temp. Coefficient	-3mV/cell/°C	-5mV/cell/°C
	40°C (104°F)	103%
Effect of temp. to Capacity	25°C (77°F)	100%
	0°C (32°F)	86%
	≤3% per month at 25°C (77°F). LPF series batteries may be stored up to 6 months at 25°C (77°F) and then a freshening charge is required. For higher temperatures the time interval will be shorter.	
Self Discharge		

DISCHARGE TABLE

Constant Current Discharge (Amperes) at 25°C (77°F)													
F.V/Time	15min	20min	30min	45min	1h	2h	3h	4h	5h	6h	8h	10h	20h
1.85V/cell	245.9	206.6	158.8	118.5	100.1	60.1	45.3	36.1	30.2	26.2	21.3	17.8	9.50
1.80V/cell	285.9	238.1	179.5	132.5	110.8	65.4	49.0	38.9	32.5	28.1	22.8	19.0	10.1
1.75V/cell	302.4	249.8	187.7	137.9	114.9	67.4	50.4	39.9	33.3	28.7	23.2	19.3	10.2
1.70V/cell	319.7	262.9	195.9	143.1	119.1	69.5	51.8	40.9	34.0	29.3	23.6	19.6	10.3
1.67V/cell	329.7	270.3	200.9	146.3	121.6	70.7	52.6	41.5	34.4	29.7	23.9	19.8	10.4
1.60V/cell	353.4	287.9	212.2	153.9	127.5	73.6	54.5	42.9	35.5	30.5	24.4	20.2	10.6
Constant Power Discharge (Watts/cell) at 25°C (77°F)													
F.V/Time	15min	20min	30min	45min	1h	2h	3h	4h	5h	6h	8h	10h	20h
1.85V/cell	472.3	398.1	306.9	229.8	194.6	117.5	88.9	71.0	59.4	51.7	42.1	35.2	19.0
1.80V/cell	543.5	454.3	344.1	255.1	213.9	127.1	95.8	76.2	63.8	55.3	45.0	37.5	20.0
1.75V/cell	569.0	472.1	356.6	263.4	220.2	130.3	97.9	77.8	65.1	56.3	45.7	38.1	20.2
1.70V/cell	594.6	491.8	368.9	271.2	226.8	133.8	100.3	79.5	66.3	57.3	46.4	38.6	20.5
1.67V/cell	614.9	502.6	376.2	275.9	230.4	135.5	101.5	80.4	67.0	57.9	46.8	38.9	20.6
1.60V/cell	641.6	526.8	392.4	287.1	239.3	140.2	104.6	82.7	68.8	59.3	47.8	39.6	21.0

LPF SERIES-FRONT TERMINAL

LPF12-190 (12V190Ah)



APPLICATIONS

- For standard power cabinet
- Network connection equipment of communication system
- Power system of special network of local area network
- Power station systems
- UPS

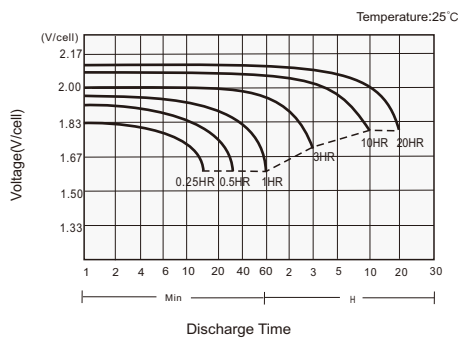
GENERAL FEATURES

- 12+ years design life (25°C)
- Puncture resistant micro-porous glass mat separators extend life
- Flame-arresting, one-way pressure-relief vent for safety and long life
- Front access design for easy installation and maintenance
- Epoxy-sealed posts eliminate leaks

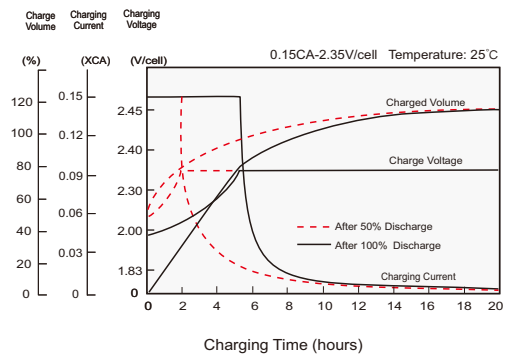
STANDARDS

- Compliance with IEC 60896 standards, EU Battery Directive
- UL, CE Approved
- Manufactured in Leoch@IATF 16949, ISO 45001, ISO 9001 and ISO 14001 certified production facilities

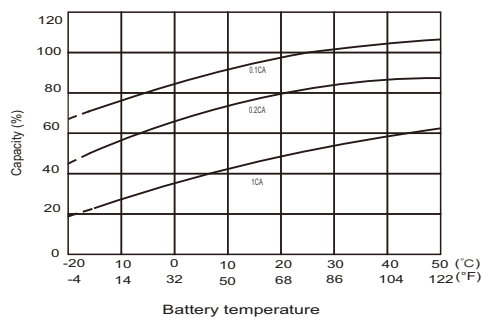
Discharge Characteristics



Charging Characteristics



Effects of Temperature on Capacity



Self Discharge Characteristics

