

LP SERIES-General Purpose

LP12-2.2 (12V2.2AH)

Specification

Nominal Voltage	12V	
Nominal Capacity(20HR)	2.2AH	
Dimensions	Length	70±1mm (2.76 inches)
	Width	48±1mm (1.89 inches)
	Container Height	98±1mm (3.86 inches)
	Total Height (with Terminal)	104±2mm (4.09 inches)
Approx Weight	Approx 0.80 kg (1.76lbs)	
Terminal	T1	
Container Material	ABS	
Rated Capacity	2.20 AH/0.110A	(20hr, 1.80V/cell, 25°C/77°F)
	2.05 AH/0.205A	(10hr, 1.80V/cell, 25°C/77°F)
	1.85 AH/0.370A	(5hr, 1.75V/cell, 25°C/77°F)
	1.61 AH/0.538A	(3hr, 1.75V/cell, 25°C/77°F)
	1.34 AH/1.34A	(1hr, 1.60V/cell, 25°C/77°F)
Max. Discharge Current	33A (5s)	
Internal Resistance	Approx 100mΩ	
Operating Temp. Range	Discharge	-15~50°C (5~122°F)
	Charge	0~40°C (32~104°F)
	Storage	-15~40°C (5~104°F)
Nominal Operating Temp. Range	25±3°C (77±5°F)	
Cycle Use	Initial Charging Current less than 0.66A. Voltage	
	14.4V~15.0V at 25°C(77°F)Temp. Coefficient -30mV/°C	
Standby Use	No limit on Initial Charging Current Voltage	
	13.5V~13.8V at 25°C(77°F)Temp. Coefficient -20mV/°C	
Capacity affected by Temperature	40°C (104°F)	103%
	25°C (77°F)	100%
	0°C (32°F)	86%
Self Discharge	Leoch LP series batteries may be stored for up to 6 months at 25°C(77°F) and then a freshening charge is required. For higher temperatures the time interval will be shorter.	



Applications

- ◆ All purpose
- ◆ Uninterruptable Power Supply (UPS)
- ◆ Electric Power System (EPS)
- ◆ Emergency backup power supply
- ◆ Emergency light
- ◆ Railway signal
- ◆ Aircraft signal
- ◆ Alarm and security system
- ◆ Electronic apparatus and equipment
- ◆ Communication power supply
- ◆ DC power supply
- ◆ Auto control system



Constant Current Discharge (Amperes) at 25 °C (77°F)

F.V/Time	5min	10min	15min	20min	30min	45min	1h	2h	3h	4h	5h	6h	8h	10h	20h
1.85V/cell	4.22	2.94	2.43	2.11	1.69	1.30	1.06	0.649	0.494	0.406	0.345	0.299	0.237	0.198	0.109
1.80V/cell	5.19	3.51	2.82	2.38	1.87	1.42	1.14	0.690	0.520	0.427	0.360	0.312	0.246	0.205	0.110
1.75V/cell	6.15	3.97	3.11	2.59	2.00	1.50	1.20	0.719	0.538	0.441	0.370	0.320	0.253	0.209	0.111
1.70V/cell	6.98	4.38	3.36	2.79	2.10	1.56	1.25	0.749	0.556	0.452	0.379	0.327	0.257	0.212	0.113
1.65V/cell	7.70	4.71	3.56	2.92	2.19	1.63	1.31	0.771	0.570	0.461	0.387	0.334	0.261	0.215	0.115
1.60V/cell	8.08	4.91	3.70	3.02	2.25	1.66	1.34	0.795	0.584	0.472	0.395	0.340	0.267	0.219	0.115

Constant Power Discharge (Watts/cell) at 25 °C (77°F)

F.V/Time	5min	10min	15min	20min	30min	45min	1h	2h	3h	4h	5h	6h	8h	10h	20h
1.85V/cell	7.97	5.61	4.67	4.08	3.30	2.55	2.09	1.29	0.983	0.811	0.690	0.599	0.478	0.398	0.220
1.80V/cell	9.68	6.63	5.37	4.58	3.62	2.76	2.24	1.36	1.03	0.847	0.716	0.622	0.493	0.410	0.221
1.75V/cell	11.3	7.42	5.87	4.95	3.84	2.92	2.35	1.41	1.06	0.868	0.731	0.633	0.503	0.415	0.222
1.70V/cell	12.7	8.10	6.29	5.27	4.01	3.01	2.43	1.46	1.09	0.885	0.744	0.645	0.507	0.420	0.224
1.65V/cell	13.8	8.60	6.58	5.48	4.14	3.11	2.52	1.49	1.11	0.899	0.757	0.654	0.513	0.423	0.226
1.60V/cell	14.3	8.84	6.78	5.59	4.22	3.15	2.55	1.53	1.13	0.916	0.768	0.664	0.521	0.428	0.227

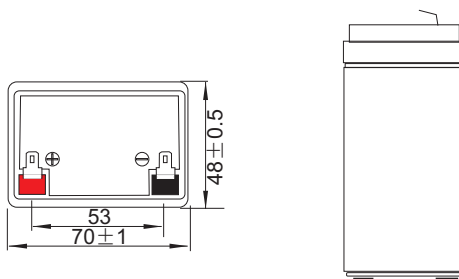
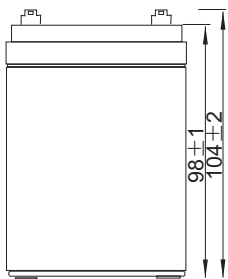
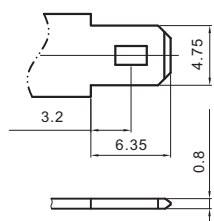
Specifications subject to change without notice.



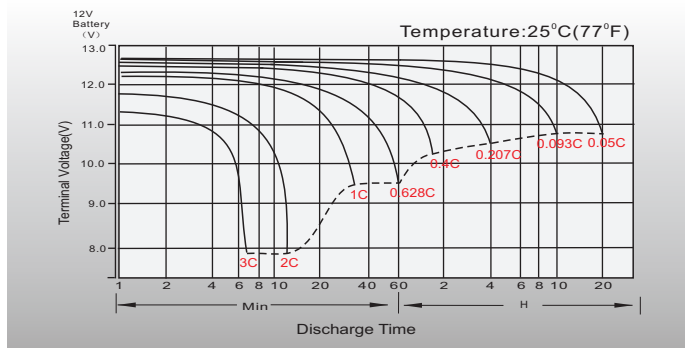
Dimensions

T1 Terminal

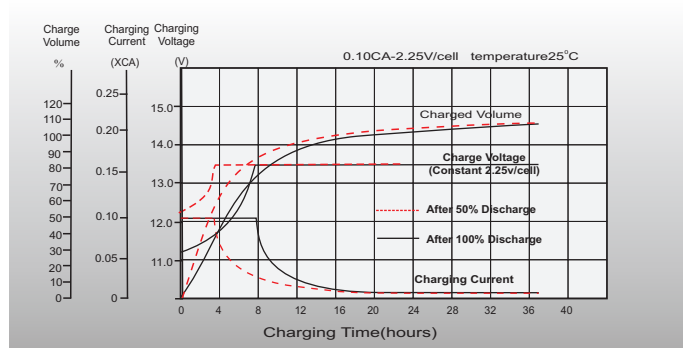
Unit: mm



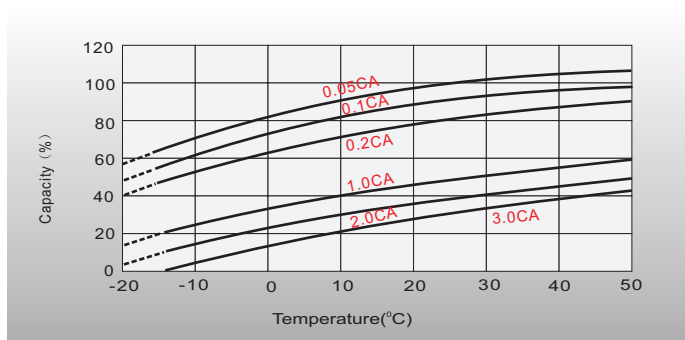
Discharge Characteristics



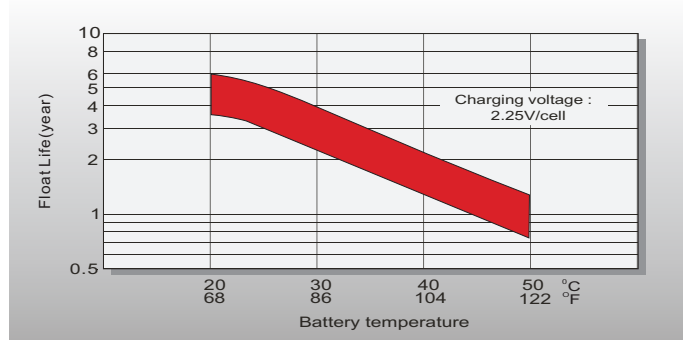
Float Charging Characteristics



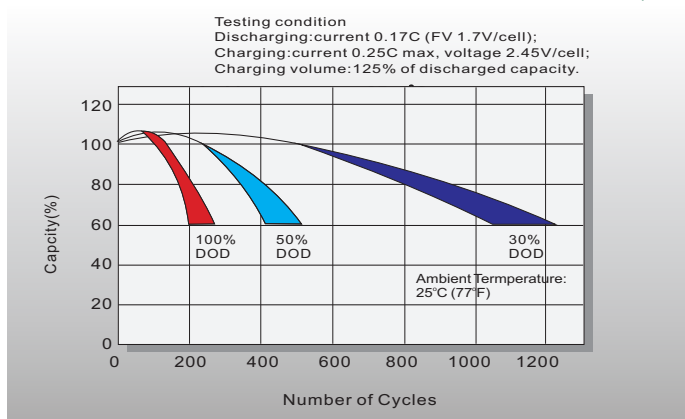
Temperature Effects in Relation to Battery Capacity



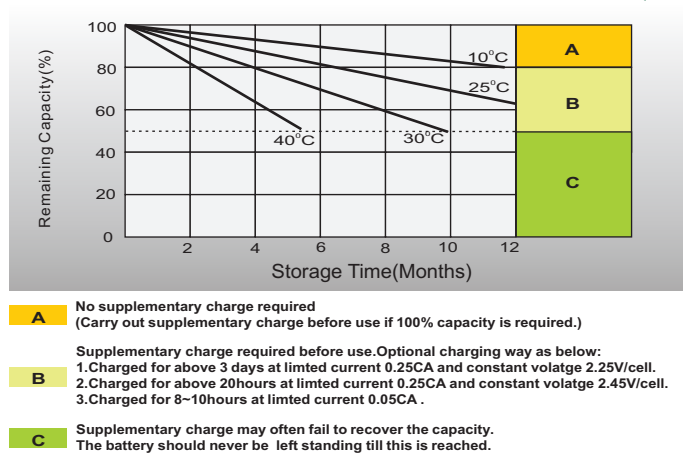
Effect of Temperature on Long Term Float Life



Cycle Life in Relation to Depth of Discharge



Self Discharge Characteristics



Sales Office

China sales office:

Add: 5th Floor, Xinbaohui Bldg., Nanhai Blvd.,
Nanshan, Shenzhen, China. 518052
Tel: +86-755-86036060 (100 lines)
Fax: +86-755-26067269
E-mail: export@leoch.com
Http://www.leoch.com

HongKong sales office:

Workshop C, 33/F, TML Tower,
No. 3 Hoi Shing Road, Tsuen Wan,
New Territories, Hong Kong
Tel: +852 35786666
Fax: +852 21170016
E-mail: sales.hk@leoch.com

Singapore sales office:

Add: No. 1 Tech Park Crescent,
Singapore 638131
Tel: +65 68636078
Fax: +65 68636079
Email sales.sg@leoch.com
Http://www.leoch.com

North America sales office:

Add: 19751 Descartes, Unit A,
Foothill Ranch, CA 92610, USA
Tel: 949-588-5853
Fax: 949-588-5966
E-mail: sales@leoch.us
Http://www.leoch.com

Europe sales office:

Add: 9B Wheatstone Court. Waterwells
Business Park, Gloucester, GL2-2AQ,
UK United Kingdom
Tel: +44(0) 1452 729428 / 1452 729696
Fax: +44 (0)1452-690125
E-mail: Sales.Europe@leoch.com