

### Specification

Nominal Voltage	2V	
Nominal Capacity(10HR)	1000.0AH	
Dimensions	Length	475±3mm (18.70 inches)
	Width	175±2mm (6.89 inches)
	Container Height	328±3mm (12.91 inches)
	Total Height (with Terminal)	350±3mm (13.78 inches)
Approx Weight	Approx 60.0 kg (132.3lbs)	
Terminal	T11	
Container Material	ABS	
Rated Capacity	1050.0 AH/52.50A	(20hr, 1.80V/cell, 25°C/77°F)
	1000.0 AH/100.0A	(10hr, 1.80V/cell, 25°C/77°F)
	870.0 AH/174.0A	(5hr, 1.75V/cell, 25°C/77°F)
	756.0 AH/252.0A	(3hr, 1.75V/cell, 25°C/77°F)
	607.0 AH/607.0A	(1hr, 1.60V/cell, 25°C/77°F)
Max. Discharge Current	8000A (5s)	
Internal Resistance	Approx 0.45mΩ	
Operating Temp. Range	Discharge	-15~50°C (5~122°F)
	Charge	0~40°C (32~104°F)
	Storage	-15~40°C (5~104°F)
Nominal Operating Temp. Range	25±3°C (77±5°F)	
Cycle Use	Initial Charging Current less than 300.0A. Voltage	
	2.4V~2.5V at 25°C(77°F)Temp. Coefficient -5mV/°C	
Standby Use	No limit on Initial Charging Current Voltage	
	2.25V~2.3V at 25°C(77°F)Temp. Coefficient -3mV/°C	
Capacity affected by Temperature	40°C (104°F)	103%
	25°C (77°F)	100%
	0°C (32°F)	86%
Self Discharge	Leoch LP series batteries may be stored for up to 6 months at 25°C(77°F) and then a freshening charge is required. For higher temperatures the time interval will be shorter.	



### Applications

- ◆ Tele-communication central station (wired or cellular)
- ◆ Power system communication, military communication, etc.
- ◆ Network communication including: data transmission, television signal transmission, etc.
- ◆ Uninterruptable Power System (UPS- for Telecom)



### Constant Current Discharge (Amperes) at 25 °C (77°F)

F.V/Time	30min	45min	1h	2h	3h	4h	5h	6h	8h	10h	20h
1.85V/cell	766.8	608.0	499.0	299.7	231.7	190.3	162.0	141.5	114.0	95.5	50.7
1.80V/cell	822.8	639.7	530.0	316.2	243.0	198.8	168.8	147.8	118.4	100.0	52.5
1.75V/cell	871.3	672.6	553.0	329.3	252.0	205.5	174.0	151.3	120.6	101.0	53.0
1.70V/cell	914.2	697.9	572.4	339.0	258.7	210.0	177.0	154.0	122.5	102.0	53.6
1.65V/cell	959.0	728.3	593.0	349.2	264.3	214.5	180.8	156.7	124.3	103.3	54.2
1.60V/cell	992.0	748.0	607.0	357.5	270.0	217.5	183.4	158.8	125.9	104.5	54.9

### Constant Power Discharge (Watts) at 25 °C (77°F)

F.V/Time	30min	45min	1h	2h	3h	4h	5h	6h	8h	10h	20h
1.85V/cell	1465.4	1169.0	965.2	583.0	452.7	373.1	319.1	279.6	226.2	189.9	100.9
1.80V/cell	1559.7	1221.8	1019.5	612.1	472.7	388.5	331.1	290.9	234.2	198.6	104.4
1.75V/cell	1639.1	1277.1	1059.0	635.0	488.9	400.3	340.1	296.9	238.1	200.3	105.3
1.70V/cell	1705.4	1316.0	1090.3	650.9	499.9	407.4	345.0	301.7	241.6	202.2	106.3
1.65V/cell	1775.6	1365.6	1123.2	667.6	508.6	414.7	351.1	306.0	244.4	204.4	107.5
1.60V/cell	1818.3	1389.4	1141.8	679.3	516.8	418.7	354.8	309.2	247.1	206.5	108.6

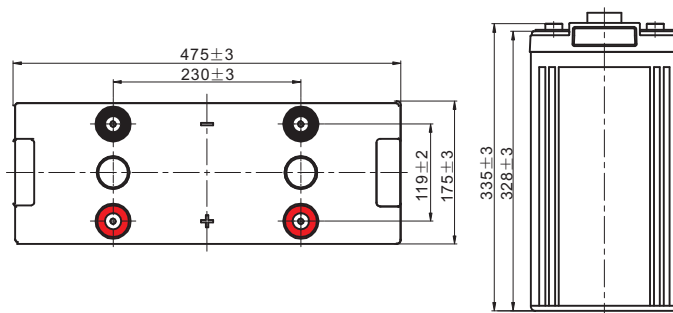
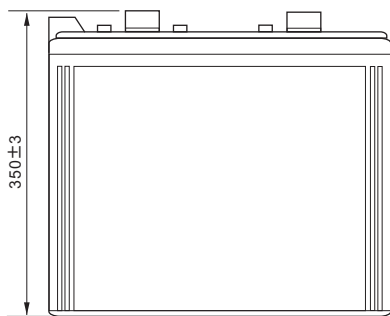
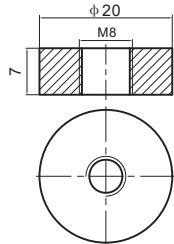
Specifications subject to change without notice.



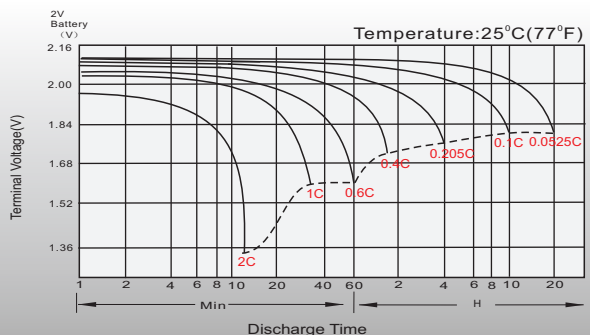
## Dimensions

### T11 Terminal

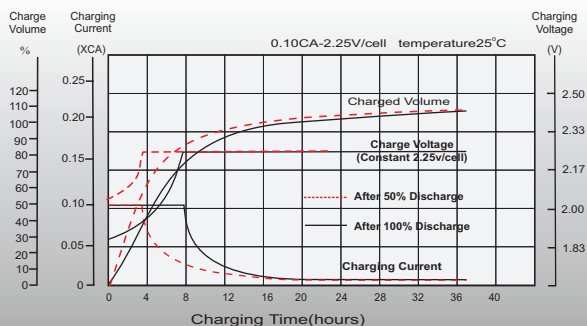
Unit: mm



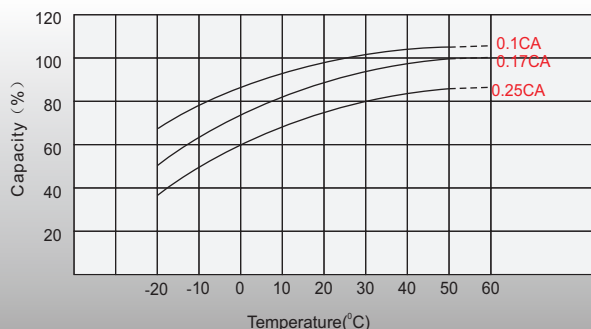
## Discharge Characteristics



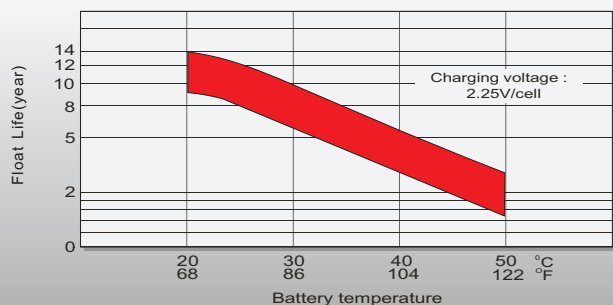
## Float Charging Characteristics



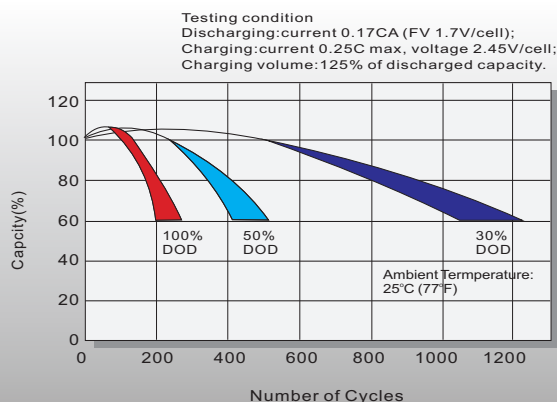
## Temperature Effects in Relation to Battery Capacity



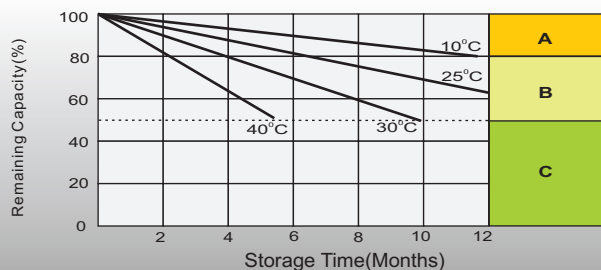
## Effect of Temperature on Long Term Float Life



## Cycle Life in Relation to Depth of Discharge



## Self Discharge Characteristics



**A** No supplementary charge required (Carry out supplementary charge before use if 100% capacity is required.)

Supplementary charge required before use. Optional charging way as below:  
**B** 1. Charged for above 3 days at limited current 0.25CA and constant voltage 2.25V/cell.  
 2. Charged for above 20 hours at limited current 0.25CA and constant voltage 2.45V/cell.  
 3. Charged for 8-10 hours at limited current 0.05CA.

**C** Supplementary charge may often fail to recover the capacity. The battery should never be left standing till this is reached.

## Sales Office

### China sales office:

Add: 5th Floor, Xinbaohui Bldg., Nanhai Blvd.,  
 Nanshan, Shenzhen, China. 518052  
 Tel: +86-755-86036060 (100 lines)  
 Tel: +86-755-26067269  
 E-mail: export@leoch.com  
 Http://www.leoch.com

### HongKong sales office:

Workshop C, 33/F, TML Tower,  
 No. 3 Hoi Shing Road, Tsuen Wan,  
 New Territories, Hong Kong  
 Tel: +852 35786666  
 Fax: +852 21170016  
 E-mail: sales.hk@leoch.com

### Singapore sales office:

Add: No. 1 Tech Park Crescent,  
 Singapore 638131  
 Tel: +65 68636078  
 Fax: +65 68636079  
 Email sales.sg@leoch.com  
 Http://www.leoch.com

### North America sales office:

Add: 19751 Descartes, Unit A,  
 Foothill Ranch, CA 92610, USA  
 Tel: 949-588-5853  
 Fax: 949-588-5966  
 E-mail: sales@leoch.us  
 Http://www.leoch.com

### Europe sales office:

Add: 9B Wheatstone Court, Waterwells  
 Business Park, Gloucester, GL2-2AQ,  
 UK United Kingdom  
 Tel: +44(0) 1452 729428 / 1452 729696  
 Fax: +44 (0)1452-690125  
 E-mail: Sales.Europe@leoch.com