

LPL SERIES-Long Life Standby

LPL12-250 (12V250AH)

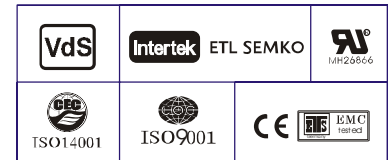
Specification

Nominal Voltage	12V	
Nominal Capacity(10HR)	250.0AH	
Dimension	Length	522±3mm (20.55 inches)
	Width	268±3mm (10.55 inches)
	Container Height	220±3mm (8.66 inches)
	Total Height (with Terminal)	226±3mm (8.90 inches)
Approx Weight	Approx 74.0 Kg (163.2 lbs)	
Terminal	T11	
Container Material	ABS	
Rated Capacity	268.0AH/13.4A	(20hr, 1.80V/cell, 25°C/77°F)
	250.0AH/25.0A	(10hr, 1.80V/cell, 25°C/77°F)
	217.5AH/43.5A	(5hr, 1.75V/cell, 25°C/77°F)
	195.0AH/65.0A	(3hr, 1.75V/cell, 25°C/77°F)
	155.0AH/155.0A	(1hr, 1.60V/cell, 25°C/77°F)
Max. Discharge Current	2500A (5s)	
Internal Resistance	Approx 2.5mΩ	
Operating Temp. Range	Discharge : -15~50°C (5~122°F)	
	Charge : 0~40°C (32~104°F)	
	Storage : -15~40°C (5~104°F)	
Nominal Operating Temp. Range	25±3°C (77±5°F)	
Cycle Use	Initial Charging Current less than 75.0A. Voltage 14.4V~15.0V at 25°C(77°F)Temp. Coefficient -30mV/°C	
	Standby Use No limit on Initial Charging Current Voltage 13.5V~13.8V at 25°C(77°F)Temp. Coefficient -20mV/°C	
Capacity affected by Temperature	40°C (104°F)	103%
	25°C (77°F)	100%
	0°C (32°F)	86%
Self Discharge	Leoch LPL series batteries may be stored for up to 6 months at 25°C(77°F) and then a freshening charge is required. For higher temperatures the time interval will be shorter.	



Applications

- ◆ UPS and EPS
- ◆ Emergency light
- ◆ Railway signal and aircraft signal system
- ◆ Marine and power stations Alarm and security system
- ◆ Electronic apparatus and equipment
- ◆ Communication power supply, DC power supply



Constant Current Discharge (Amperes) at 25 °C (77°F)

F.V/Time	10min	15min	20min	30min	45min	1h	2h	3h	4h	5h	6h	8h	10h	20h
1.85V/cell	292.5	246.0	218.3	181.0	139.7	119.5	77.4	58.2	47.7	40.1	35.1	28.2	24.2	12.9
1.80V/cell	334.7	276.2	241.3	196.6	150.7	126.1	83.2	62.5	50.7	42.5	37.2	29.7	25.0	13.4
1.75V/cell	380.1	311.3	266.7	213.6	164.3	137.5	86.5	65.0	52.4	43.5	38.4	30.7	25.7	13.7
1.70V/cell	429.3	345.4	294.3	233.2	177.0	145.5	91.1	68.4	54.8	46.0	40.2	31.9	26.7	14.1
1.65V/cell	461.0	369.8	313.1	246.1	187.3	150.5	94.5	71.2	56.9	47.5	41.6	33.0	27.4	14.5
1.60V/cell	\	405.1	340.2	262.6	194.7	155.0	96.9	73.0	58.2	48.6	42.5	33.6	28.0	14.7

Constant Power Discharge (Watts) at 25 °C (77°F)

F.V/Time	10min	15min	20min	30min	45min	1h	2h	3h	4h	5h	6h	8h	10h	20h
1.85V/cell	546.2	464.0	415.8	348.6	271.3	232.9	151.8	114.6	94.1	79.4	69.8	56.2	48.4	25.9
1.80V/cell	617.7	514.1	453.0	372.9	290.4	244.5	162.1	122.4	99.5	83.8	73.6	59.0	49.9	26.7
1.75V/cell	690.4	572.3	495.9	401.9	313.7	265.3	168.0	126.8	102.6	85.5	75.7	60.8	51.2	27.4
1.70V/cell	762.3	626.2	543.3	436.4	336.7	279.9	176.6	133.2	107.0	90.2	79.2	63.3	53.1	28.0
1.65V/cell	811.2	665.4	573.7	456.8	353.1	287.5	182.0	138.0	110.8	92.8	81.7	65.3	54.5	28.9
1.60V/cell	\	716.9	616.5	484.0	365.0	294.5	185.7	140.9	112.9	94.7	83.2	66.3	55.6	29.3

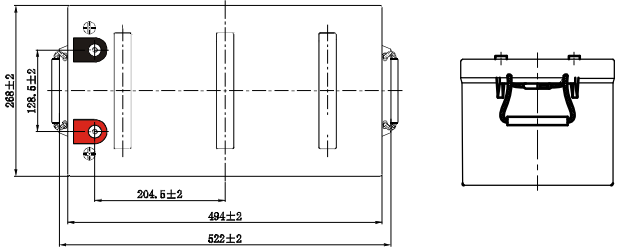
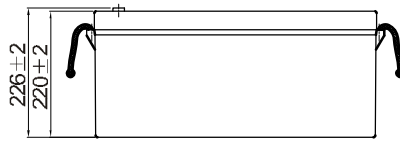
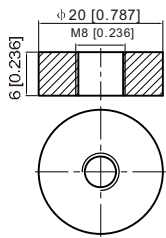
Specifications subject to change without notice.



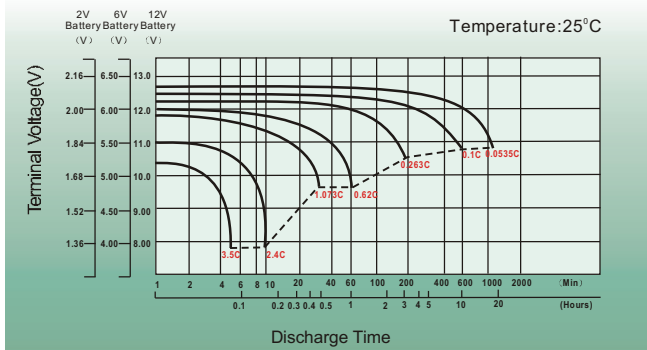
Dimensions

T11 Terminal

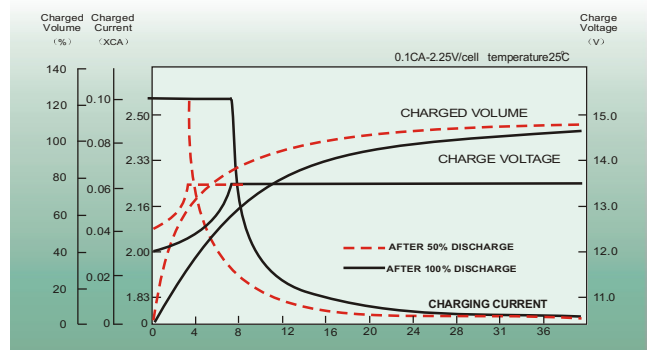
Unit: mm [inches]



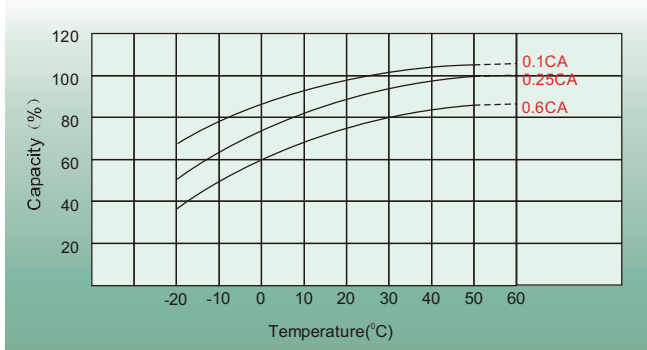
Discharge Characteristics



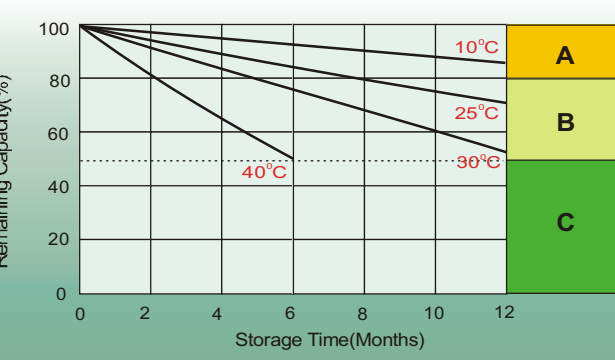
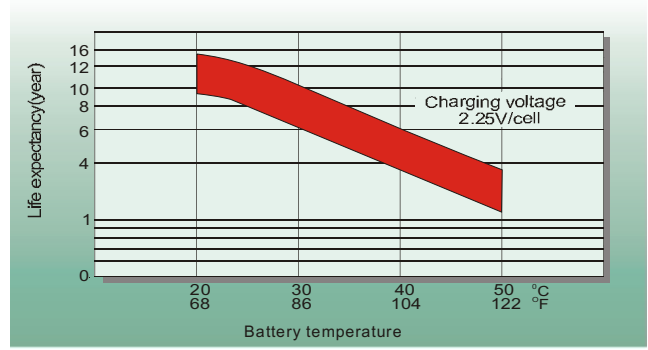
Float Charging Characteristics



Temperature Effects in Relation to Battery Capacity



Effect of Temperature on Long Term Float Life



Self Discharge Characteristics

- A** No supplementary charge required
(Carry out supplementary charge before use if 100% capacity is required.)
- B** Supplementary charge required before use. Optional charging way as below:
 1. Charged for above 3 days at limited current 0.25CA and constant voltage 2.25V/cell.
 2. Charged for above 20 hours at limited current 0.25CA and constant voltage 2.45V/cell.
 3. Charged for 8-10 hours at limited current 0.05CA.
- C** Supplementary charge may often fail to recover the capacity.
The battery should never be left standing till this is reached.

Sales Office

China sales office:

Add: 5th Floor, Xinbaohui Bldg., Nanhai Blvd.,
Nanshan, Shenzhen, China. 518052
Tel: +86-755-86036060 (100 lines)
Fax: +86-755-26067269
E-mail: export@leoch.com
Http://www.leoch.com

HongKong sales office:

Add: Workshop C, 33/F, TML Tower,
No. 3 Hoi Shing Road, Tsuen Wan,
New Territories, Hong Kong
Tel: +852 35786666
Fax: +852 21170016
E-mail: sales.hk@leoch.com

Singapore sales office:

Add: No. 1 Tech Park Crescent,
Singapore 638131
Tel: +65 68416629
Fax: +65 68443210
Email: sales.sg@leoch.com

North America sales office:

Add: 19751 Descartes, Unit A,
Foothill Ranch, CA 92610, USA
Tel: 949-588-5853
Fax: 949-588-5966
E-mail: sales@leoch.us
Http://www.leoch.com

Europe sales office:

Add: 9B Wheatstone Court, Waterwells
Business Park, Gloucester, GL2-2AQ,
UK United Kingdom
Tel: +44(0) 1452 729428 / 1452 729696
Fax: +44 (0) 1452-690125
E-mail: Sales.Europe@leoch.com