

XPE12-225(12V65AH)

UPS HIGH RATE

Application

- ◆ UPS (High rate)
- ◆ High power backup supply
- ◆ Emergency power supply
- ◆ Emergency lighting
- ◆ Electric starting

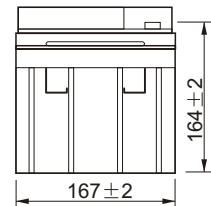
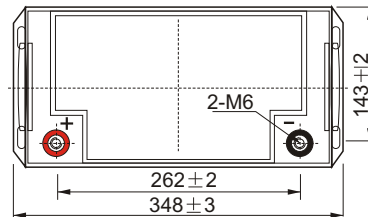
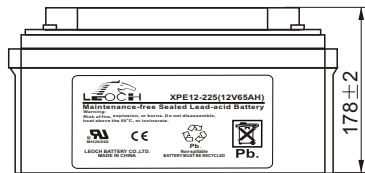
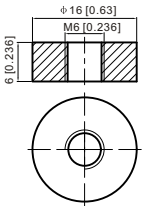


Specification

Battery Type	Valve-Regulated, Expanding Grid, Absorbed Glass Mat (AGM) Technology		Self Discharge	≤3% of capacity declined per month at 25°C
Capacity	225Watts/cell	15min rate (1.67V/cell)	Current	Max. Discharge Current(5s) 975A
	65AH	10HR (1.80V/cell)		Initial Charging Current Less than 19.5A
Dimensions	Length	348±3mm (13.70 inches)	Operating Temp. Range	Discharge -15~50 °C (5~122 °F)
	Width	167±2mm (6.57 inches)		Charging 0~40 °C (32~104 °F)
	Height	178±2mm (7.01 inches)		Storage -15~40 °C (5~104 °F)
	Total height	178±2mm (7.01 inches)	Internal Resistance	Approx 7.0mΩ (25 °C)
Approx Weight	Approx 19.0 kg (41.9lbs)		Container Material	ABS
			Terminal	T6

Dimensions

T6 Terminal



Unit: mm [inches]

Constant Current Discharge (Amperes) at 25 °C (77°F)

F.V/Time	5min	10min	15min	20min	30min	45min	1h	2h	3h	4h	5h	6h	8h	10h	20h
1.85V/cell	131.4	101.3	88.6	82.6	68.5	51.3	41.5	24.0	16.9	13.4	11.2	9.61	7.60	6.37	3.32
1.80V/cell	150.8	111.7	97.1	89.1	72.2	53.2	42.9	24.8	17.4	13.8	11.5	9.89	7.82	6.50	3.39
1.75V/cell	171.6	125.4	105.6	94.5	75.3	54.8	44.1	25.5	17.8	14.2	11.8	10.1	7.99	6.62	3.45
1.70V/cell	188.9	135.9	112.5	100.5	79.1	57.1	45.4	25.9	18.2	14.5	12.0	10.3	8.12	6.73	3.51
1.67V/cell	208.9	148.0	120.4	105.2	82.5	58.9	46.7	26.5	18.6	14.7	12.2	10.5	8.26	6.85	3.57
1.60V/cell	229.7	159.8	127.1	110.7	85.7	61.0	47.7	26.9	18.8	15.1	12.5	10.7	8.44	6.97	3.61

Constant Power Discharge (Watts/Cell) at 25 °C (77°F)

F.V/Time	5min	10min	15min	20min	30min	45min	1h	2h	3h	4h	5h	6h	8h	10h	20h
1.85V/cell	255.7	198.2	174.2	163.4	136.2	102.4	83.2	48.3	34.1	27.2	22.7	19.6	15.6	13.10	6.87
1.80V/cell	290.3	216.3	189.1	174.5	142.2	105.3	85.4	49.6	35.0	27.9	23.2	20.1	16.0	13.31	6.96
1.75V/cell	326.9	240.6	203.9	183.3	147.0	107.7	87.1	50.7	35.6	28.3	23.7	20.4	16.2	13.48	7.05
1.70V/cell	355.7	257.9	214.7	193.1	152.9	111.2	88.9	51.2	36.2	28.9	24.0	20.7	16.3	13.62	7.12
1.67V/cell	390.4	278.7	228.2	200.7	158.6	114.0	91.0	51.9	36.6	29.2	24.3	20.8	16.5	13.77	7.21
1.60V/cell	424.3	297.6	238.4	209.3	163.1	117.0	92.1	52.3	36.8	29.5	24.5	21.1	16.7	13.90	7.22