



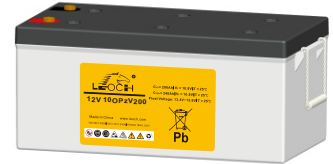
# OPzV Series-Tubular Gel

## 12V 10OPzV200(12V200Ah)

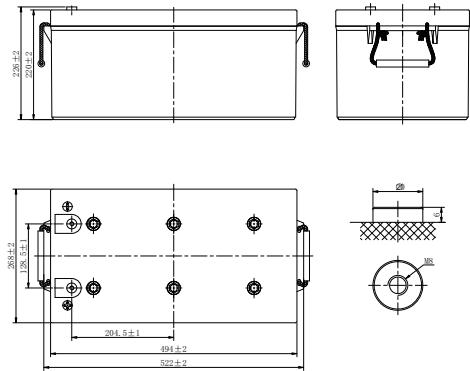


### Specifications

Rated Voltage	12V	
Nominal Capacity	200.0Ah	(C <sub>10</sub> , 1.80V/cell)
Dimension	Length	522mm(20.55 in.)
	Width	268mm(14.49 in.)
	Container Height	220mm(8.66 in.)
	Total Height	226mm(8.90 in.)
Approx Weight	70.5Kg (155.4 lbs)	
Terminal	M8	
Container Material	ABS	
Rated Capacity (25°C)	200.0 Ah	(10hr, 20.0A, 1.80V/cell)
	175.5 Ah	(5hr, 35.1A, 1.75V/cell)
	155.7 Ah	(3hr, 51.9A, 1.75V/cell)
	112.0 Ah	(1hr, 112.0A, 1.67V/cell)
Max. Discharge Current (5s)	1600A	
Internal Resistance(25°C)	Approx. 4.8mΩ	
Operating Temp. Range	Discharge	-20°C~55°C (-4°F~131°F)
	Charge	0°C~40°C (32°F~104°F)
	Storage	-20°C~50°C (-4°F~122°F)
Nominal Operating Temp. Range	25±3°C (77±5°F)	
Max. Charging Current(25°C)	50.0A	
Charge voltage(25°C)	Float	13.5V
	Temp. Coefficient	-3mV/cell/°C
	Cycle(Equalization)	14.1~14.4V
Effect of temp. to Capacity	40°C (104°F)	106%
	25°C (77°F)	100%
	0°C (32°F)	86%
Self Discharge	≤3% per month at 25°C	



### Layout



### Constant Current Discharge (Amperes) at 25 °C (77 °F)

F.V/Time	1h	2h	3h	5h	8h	10h	20h
1.85V/cell	89.7	60.8	46.7	31.9	22.2	18.7	9.63
1.80V/cell	101.0	66.8	50.8	34.4	23.8	20.0	10.3
1.75V/cell	105.0	68.6	51.9	35.1	24.2	20.3	10.5
1.70V/cell	109.0	70.4	53.0	35.6	24.5	20.5	10.6
1.65V/cell	112.0	71.9	54.0	36.2	24.8	20.8	10.7
1.60V/cell	114.0	72.8	54.6	36.5	25.0	20.9	10.8

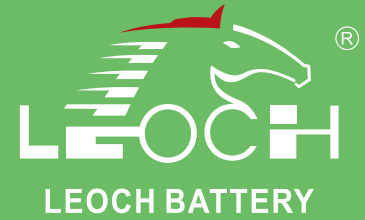
### Constant Power Discharge (Watts/cell) at 25 °C (77 °F)

F.V/Time	1h	2h	3h	5h	8h	10h	20h
1.85V/cell	174.0	118.0	91.2	62.7	44.1	37.3	19.2
1.80V/cell	194.0	129.0	98.8	67.4	47.1	39.7	20.4
1.75V/cell	201.0	132.0	101.0	68.5	47.8	40.3	20.8
1.70V/cell	207.0	135.0	102.0	69.3	48.3	40.7	21.0
1.65V/cell	212.0	137.0	104.0	70.1	48.7	41.0	21.1
1.60V/cell	214.0	138.0	104.0	70.6	49.0	41.3	21.3



# OPzV Series-Tubular Gel

## 12V 100PzV200(12V200Ah)



### Applications

- Telecommunications
- Radio and cellular telephone relay stations
- Emergency lighting systems
- Power stations, Conventional power stations, alternative power (solar, wind)
- Large UPS and computer back-up
- Railway signaling
- Maritime standby power on ships and ashore
- Process and control engineering
- Standby power
- Buoy lighting

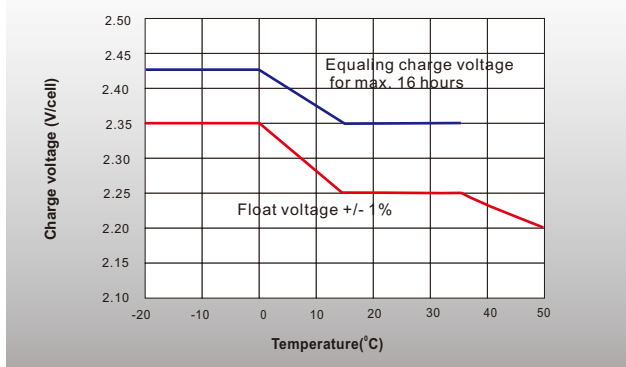
### General Features

- 20 years design life (20°C)
- Better recovery performance
- Wide working temperature range (-20~55°C)
- No electrolyte stratification provides longer service life
- High recombination efficient
- Built in copper core based in lead will carry large current
- Pasted negative plate special grid design increase the active material, availability large current discharge and charge ability
- Tubular type positive plate (polyester tube) prevent the active material from falling. Multi metal alloy pressed positive grid increase the anti corrosion ability and service life

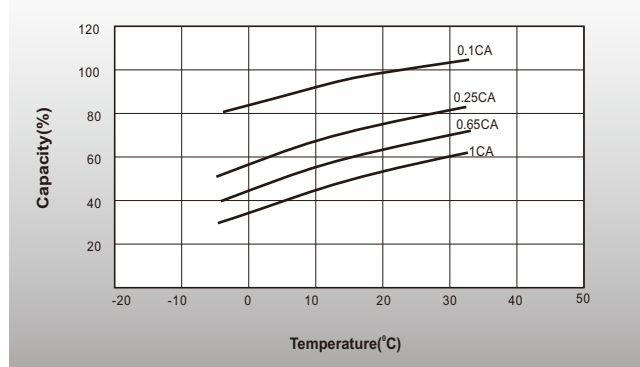
### Standards

- Compliance with IEC 60896, IEC 61427,
- UL, CE Certified
- Manufactured in Leoch@IATF16949, ISO 45001, ISO 9001 and ISO 14001 certified production facilities

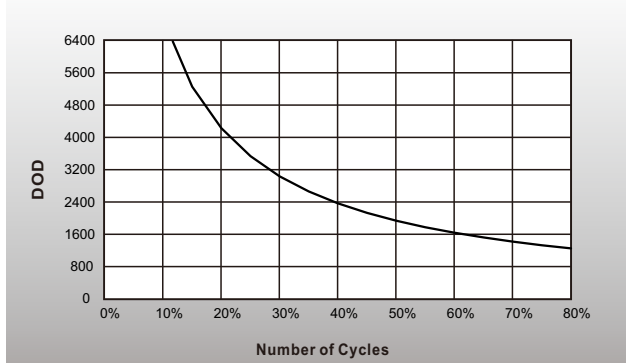
Charge voltage vs ambient temperature curve



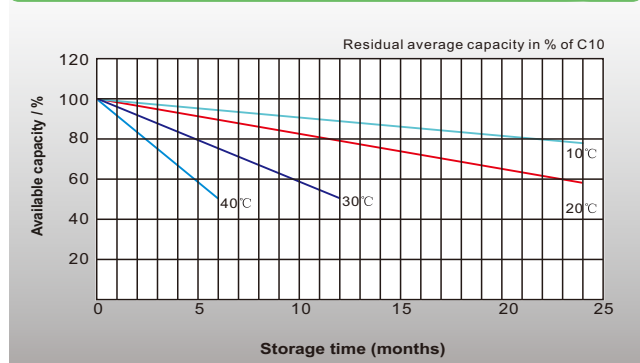
Temperature Effects in Relation to Battery Capacity



### Cycle Life



General Relation of Capacity VS. Storage Time



## Sales Offices Worldwide

### China Sales Office

5th Floor, Xinbaohui Bldg., Nanhai Blvd.,  
Nanshan, Shenzhen, China. 518052  
Tel: +86-755-86036060 (100 lines)  
Fax: +86-755-26067269  
E-mail: export@leoch.com

### HongKong Sales Office

Workshop C, 33/F, TML Tower, No. 3 Hoi Shing Road,  
Tsuen Wan, New Territories, Hong Kong  
Tel: +852 35786666  
Fax: +44 1452 690125  
E-mail: sales.hk@leoch.com

### Singapore Sales Office

No. 1 Tech Park Crescent,  
Singapore 638131  
Tel: +65 68636078  
Fax: +65 6863 6079  
Email: sales.sg@leoch.com

### Australia Sales Office

2/29 Tarlington Place, Smithfield. NSW 2164  
Australia  
Tel: 02 9756 0950  
E-mail: sales.au@leoch.com

### North America Sales Office

19751 Descartes  
Foothill Ranch, CA 92610, USA  
Tel: 949-588-5853  
Fax: 949-588-5966  
E-mail: sales@leoch.us

### UK Sales Office

9B Wheatstone Court, Waterwells, Business Park,  
Gloucester, GL2-2AQ, UK United Kingdom  
Tel: +44(0) 1452 729428 / 1452 729696  
Fax: +44 1452 690125  
E-mail: Sales.Europe@leoch.com

### EMEA Sales Office

1 Deligiorgi St., 121 31 Athens,  
Greece  
Tel: +30 210 5760318 (2 lines)  
E-mail: support\_EMEA@leoch.com

### India Sales Office

Shed no.A-53(b), 2nd Stage of Peenya Industrial Area,  
Bangalore North Taluk, Bangalore-560058, India  
Tel: +91-80-23440018/23440019  
Fax: +91-80-23440017  
E-mail: indiasales@leoch.com



[Http://www.leoch.com](http://www.leoch.com)  
[Http://www.leoch.us](http://www.leoch.us)

© 2021 LEOCH. All rights reserved.

Trademarks and logos are the property of LEOCH and its affiliates unless otherwise noted.  
Subject to revisions without prior notice.

Publication No.:LB-12V 100PzV200-PD-EN-V1.0-202104