

FLOODED BATTERY

31T-925 (12V100Ah)



CHARACTERISTICS

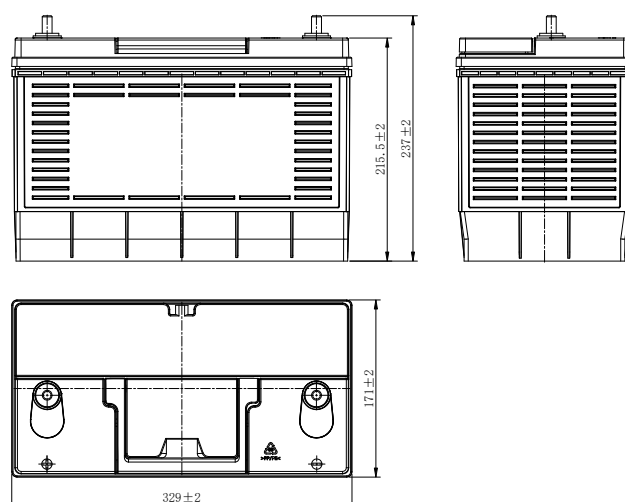
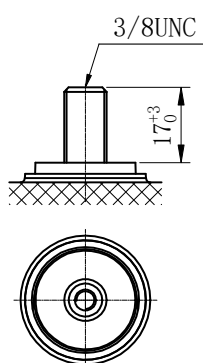
Item	Specifications
Nominal Voltage	12V
Nominal Capacity (20HR)	100Ah
Reserve Capacity	180min
Cold Cranking Amps@0°F (-18°C)	925A
Dimension	Length
	329mm (13.0inches)
	Width
Dimension	171mm (6.73inches)
	Height
Dimension	237mm (9.33inches)
	Approx Weight
Dimension	25.1kg (55.3lbs)
	Terminal
Dimension	13
	Cell layout
Dimension	8
	Hold-Down
Dimension	B0
	Case
Dimension	Black-PP Material
	Cover
Dimension	Black-PP Material
	Handle
Dimension	TS9

APPLICATIONS

- Car start
- EV/HEV
- Engine start

GENERAL FEATURES

- High capacity and high CCA
- Long life
- Advanced lead-calcium alloy technology, maintenance-free design
- Patented venting system bring less water loss and prevent acid leakage
- OE quality certification



*Values are subject to variation of +/- 5% in normal manufacturing processes.

Leoch International Technology Ltd.
www.leoch.com

Leoch Batteries Pte Ltd
www.leoch.sg

Leoch Battery Corporation
www.leochamericas.com

Leoch Europe S.A.
www.leoch.eu