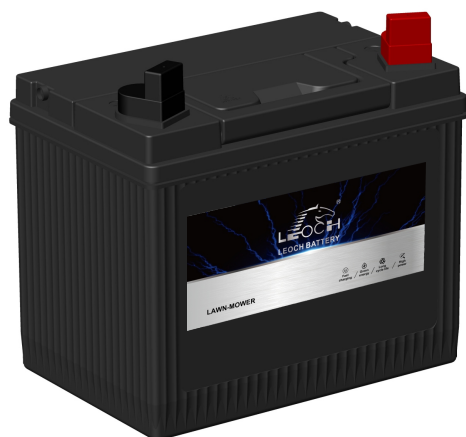


LAWN MOWER BATTERY

U1R-300 (12V23Ah)



CHARACTERISTICS

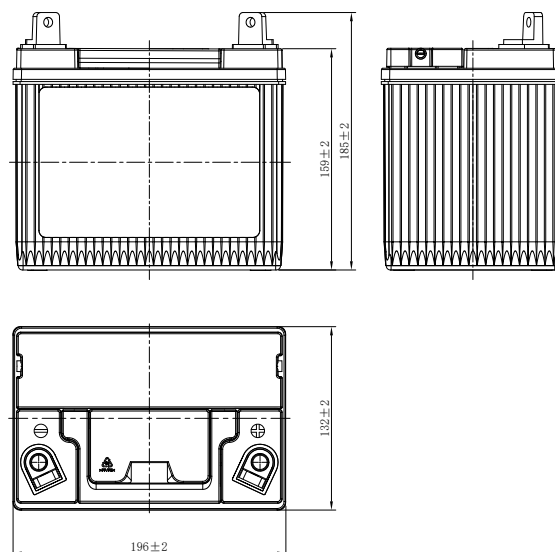
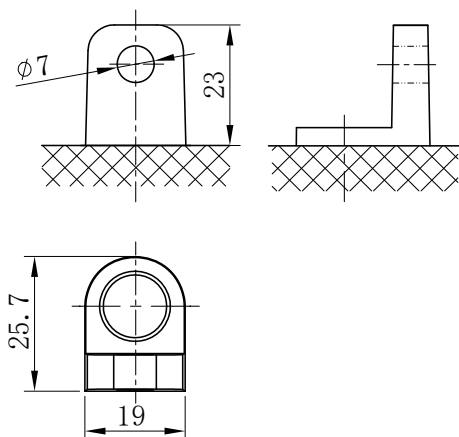
Item	Specifications
Nominal Voltage	12V
Nominal Capacity (20HR)	23Ah
Reserve Capacity	32min
Cold Cranking Amps@0°F (-18°C)	300A
Dimension	Length
	196mm (7.72inches)
	Width
Height	132mm (5.20inches)
	185mm (7.28inches)
Approx Weight	7.7kg (17.0lbs)
Terminal	4
Cell layout	0
Hold-Down	B0
Case	Black-PP Material
Cover	Black-PP Material
Handle	TS9

APPLICATIONS

- Garden Tractors
- Lawn Tractors

GENERAL FEATURES

- Design for lawn mower
- Extreme start ability and high capacity
- Absolutely maintenance-free
- Leakage and spill proof
- Vibration resistance
- Long service life



*Values are subject to variation of +/- 5% in normal manufacturing processes.

Leoch International Technology Ltd.
www.leoch.com

Leoch Batteries Pte Ltd
www.leoch.sg

Leoch Battery Corporation
www.leochamericas.com

Leoch Europe S.A.
www.leoch.eu