

# FLOODED BATTERY

55565 (12V55Ah)



## CHARACTERISTICS

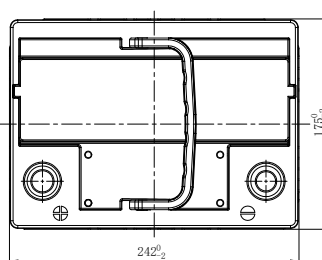
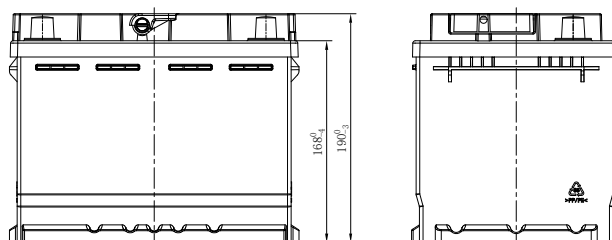
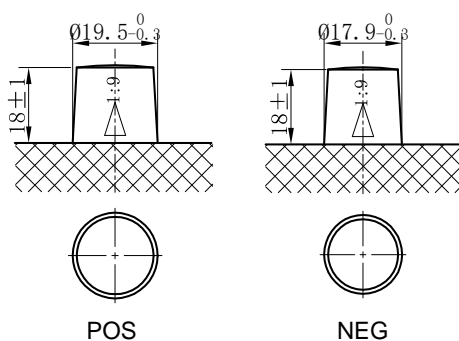
Item	Specifications
Nominal Voltage	12V
Nominal Capacity (20HR)	55Ah
Reserve Capacity	88min
Cold Cranking Amps@0°F (-18°C)	500A
Dimension	Length
	242mm (9.53inches)
	Width
Dimension	175mm (6.89inches)
	Height
Dimension	190mm (7.48inches)
	Approx Weight
Dimension	14.6kg (32.2lbs)
	Terminal
Dimension	1
	Cell layout
Dimension	1
	Hold-Down
Dimension	B13
	Case
Dimension	Black-PP Material
	Cover
Dimension	Black-PP Material
	Handle
Dimension	TS2

## APPLICATIONS

- Car start
- EV/HEV
- Engine start

## GENERAL FEATURES

- High capacity and high CCA
- Long life
- Advanced lead-calcium alloy technology, maintenance-free design
- Patented venting system bring less water loss and prevent acid leakage
- OE quality certification



\*Values are subject to variation of +/- 5% in normal manufacturing processes.

Leoch International Technology Ltd.  
www.leoch.com

Leoch Batteries Pte Ltd  
www.leoch.sg

Leoch Battery Corporation  
www.leochamericas.com

Leoch Europe S.A.  
www.leoch.eu