

FLOODED HIGH TEMPERATURE BATTERY

55025HT (12V49Ah)



CHARACTERISTICS

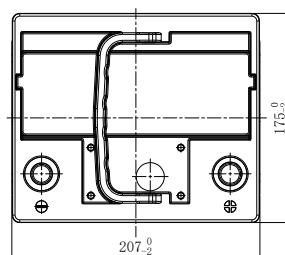
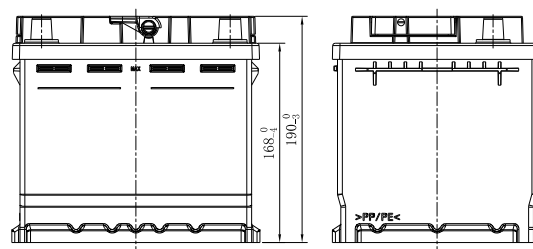
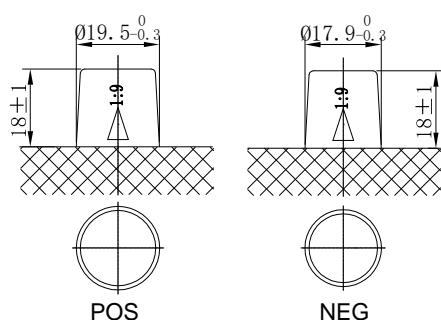
Item	Specifications
Nominal Voltage	12V
Nominal Capacity (20HR)	49Ah
Reserve Capacity	77min
Cold Cranking Amps@0°F (-18°C)	380A
Dimension	Length
	207mm (8.15inches)
	Width
Dimension	175mm (6.89inches)
	Height
Dimension	190mm (7.48inches)
	Approx Weight
Terminal	12.5kg (27.6lbs)
	1
Cell layout	0
Hold-Down	B13
Case	Black-PP Material
Cover	Black-PP Material
Handle	TS2

APPLICATIONS

- Car start
- EV/HEV
- Engine start

GENERAL FEATURES

- Design for high temperature countries and regions
- Superior life in high temperature environment
- High tin alloy and thicker positive grid
- High-temp paste
- Patented venting system bring less water loss and prevent acid leakage



*Values are subject to variation of +/- 5% in normal manufacturing processes.

Leoch International Technology Ltd.
www.leoch.com

Leoch Batteries Pte Ltd
www.leoch.sg

Leoch Battery Corporation
www.leochamericas.com

Leoch Europe S.A.
www.leoch.eu