

# FLOODED HIGH TEMPERATURE BATTERY

## 62D31LHT (12V67Ah)



### CHARACTERISTICS

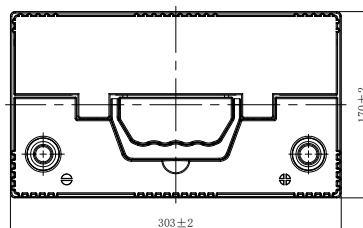
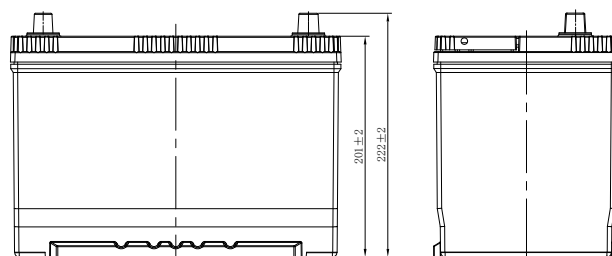
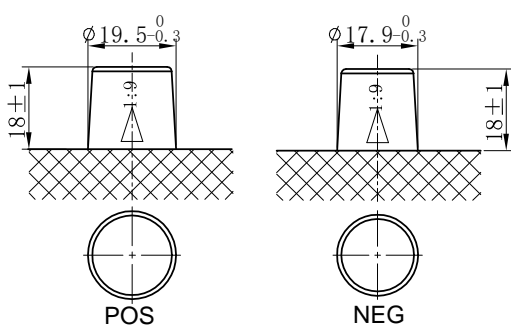
Item	Specifications	
Nominal Voltage	12V	
Nominal Capacity (20HR)	67Ah	
Reserve Capacity	112min	
Cold Cranking Amps@0°F (-18°C)	450A	
Dimension	Length	303mm (11.9inches)
	Width	170mm (6.69inches)
	Container Height	201mm (7.91inches)
	Total Height (with Terminal)	222mm (8.74inches)
Approx Weight	18.5kg (40.8lbs)	
Terminal	1	
Cell layout	0	
Hold-Down	B1	
Case	Black-PP Material	
Cover	Black-PP Material	
Handle	TS1	

### APPLICATIONS

- Car start
- EV/HEV
- Engine start

### GENERAL FEATURES

- Design for high temperature countries and regions
- Superior life in high temperature environment
- High tin alloy and thicker positive grid
- High-temp paste
- Patented venting system bring less water loss and prevent acid leakage



\*Values are subject to variation of +/- 5% in normal manufacturing processes.

Leoch International Technology Ltd.  
[www.leoch.com](http://www.leoch.com)

Leoch Batteries Pte Ltd  
[www.leoch.sg](http://www.leoch.sg)

Leoch Battery Corporation  
[www.leochamericas.com](http://www.leochamericas.com)

Leoch Europe S.A.  
[www.leoch.eu](http://www.leoch.eu)