

FLOODED BATTERY

105D31L (12V90Ah)



CHARACTERISTICS

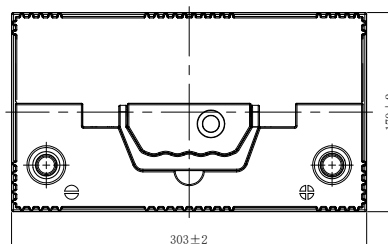
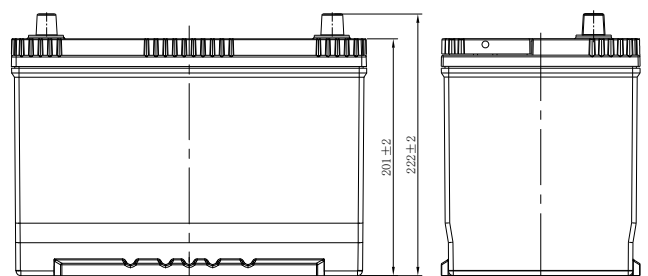
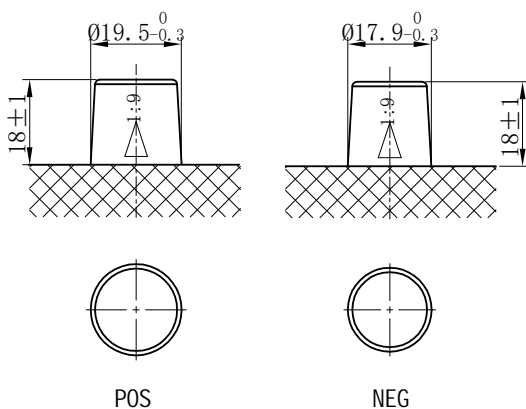
Item	Specifications
Nominal Voltage	12V
Nominal Capacity (20HR)	90Ah
Reserve Capacity	158min
Cold Cranking Amps@0°F (-18°C)	720A
Dimension	Length
	303mm (11.9inches)
	Width
Dimension	170mm (6.69inches)
	Height
Dimension	222mm (8.74inches)
	Approx Weight
Dimension	22.1kg (48.7lbs)
	Terminal
Dimension	1
	Cell layout
Dimension	0
	Hold-Down
Dimension	B1
	Case
Dimension	Black-PP Material
	Cover
Dimension	Black-PP Material
	Handle
Dimension	TS1

APPLICATIONS

- Car start
- EV/HEV
- Engine start

GENERAL FEATURES

- High capacity and high CCA
- Long life
- Advanced lead-calcium alloy technology, maintenance-free design
- Patented venting system bring less water loss and prevent acid leakage
- OE quality certification



*Values are subject to variation of +/- 5% in normal manufacturing processes.

Leoch International Technology Ltd.
www.leoch.com

Leoch Batteries Pte Ltd
www.leoch.sg

Leoch Battery Corporation
www.leochamericas.com

Leoch Europe S.A.
www.leoch.eu