

FLOODED BATTERY

50D26L (12V55Ah)



CHARACTERISTICS

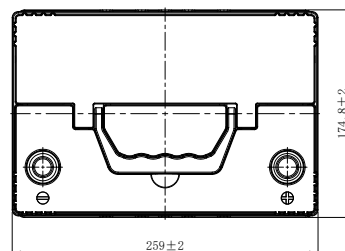
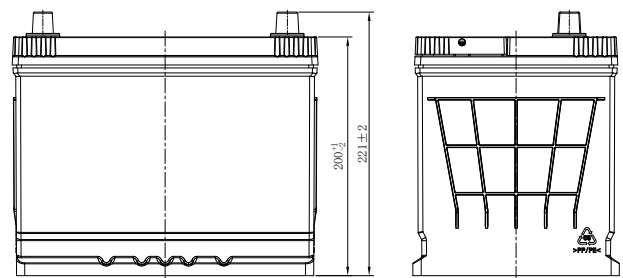
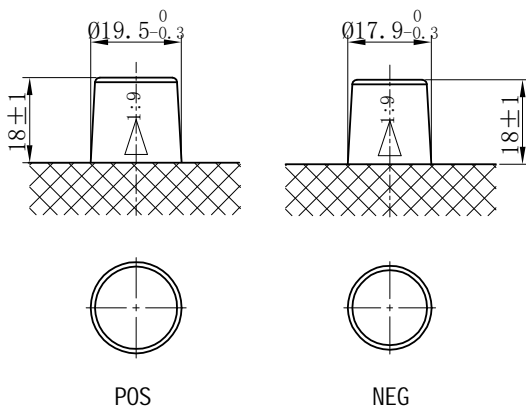
| Item | Specifications | |
|--------------------------------|-------------------|----------------------|
| Nominal Voltage | 12V | |
| Nominal Capacity (20HR) | 55Ah | |
| Reserve Capacity | 88min | |
| Cold Cranking Amps@0°F (-18°C) | 450A | |
| Dimension | Length | 259mm (10.2inches) |
| | Width | 174.8mm (6.88inches) |
| | Height | 221mm (8.70inches) |
| Approx Weight | 16.1kg (35.5lbs) | |
| Terminal | 1 | |
| Cell layout | 0 | |
| Hold-Down | B1 | |
| Case | Black-PP Material | |
| Cover | Black-PP Material | |
| Handle | TS1 | |

APPLICATIONS

- Car start
- EV/HEV
- Engine start

GENERAL FEATURES

- High capacity and high CCA
- Long life
- Advanced lead-calcium alloy technology, maintenance-free design
- Patented venting system bring less water loss and prevent acid leakage
- OE quality certification



*Values are subject to variation of +/- 5% in normal manufacturing processes.

Leoch International Technology Ltd.
www.leoch.com

Leoch Batteries Pte Ltd
www.leoch.sg

Leoch Battery Corporation
www.leochamericas.com

Leoch Europe S.A.
www.leoch.eu