

# FLOODED BATTERY

55D26L (12V60Ah)



## CHARACTERISTICS

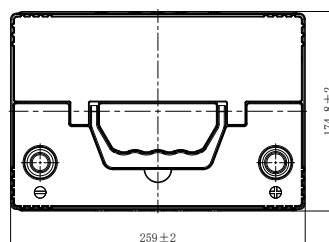
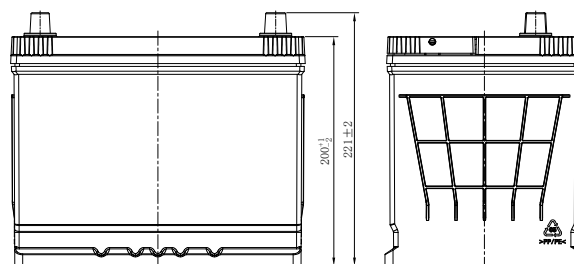
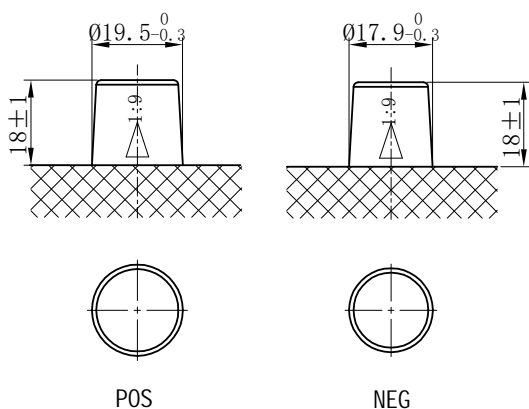
Item	Specifications
Nominal Voltage	12V
Nominal Capacity (20HR)	60Ah
Reserve Capacity	98min
Cold Cranking Amps@0°F (-18°C)	500A
Dimension	Length 259mm (10.2inches)
	Width 174.8mm (6.88inches)
	Height 221mm (8.70inches)
Approx Weight	16.5kg (36.4lbs)
Terminal	1
Cell layout	0
Hold-Down	B1
Case	Black-PP Material
Cover	Black-PP Material
Handle	TS1

## APPLICATIONS

- Car start
- EV/HEV
- Engine start

## GENERAL FEATURES

- High capacity and high CCA
- Long life
- Advanced lead-calcium alloy technology, maintenance-free design
- Patented venting system bring less water loss and prevent acid leakage
- OE quality certification



\*Values are subject to variation of +/- 5% in normal manufacturing processes.

Leoch International Technology Ltd.  
www.leoch.com

Leoch Batteries Pte Ltd  
www.leoch.sg

Leoch Battery Corporation  
www.leochamericas.com

Leoch Europe S.A.  
www.leoch.eu