

FLOODED BATTERY

95D31L (12V80Ah)



CHARACTERISTICS

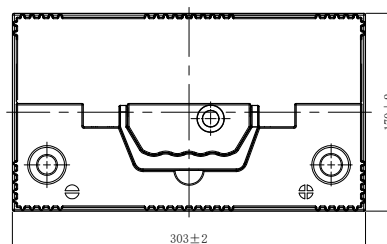
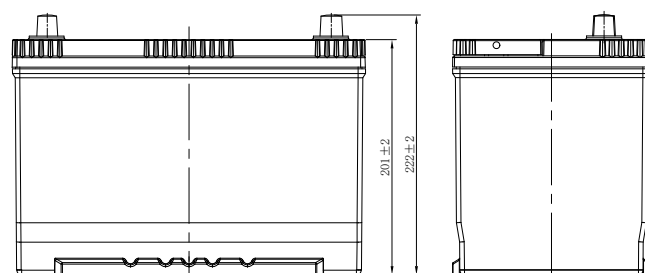
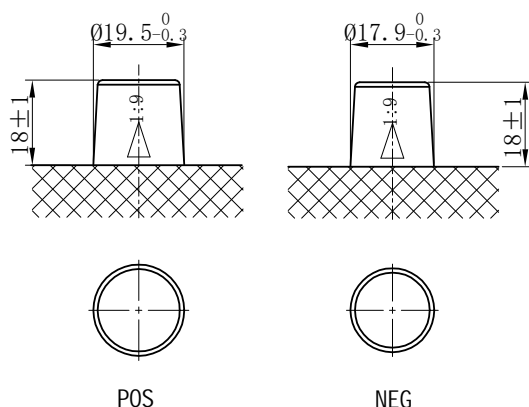
| Item | Specifications |
|--------------------------------|--------------------|
| Nominal Voltage | 12V |
| Nominal Capacity (20HR) | 80Ah |
| Reserve Capacity | 138min |
| Cold Cranking Amps@0°F (-18°C) | 630A |
| Dimension | Length |
| | 303mm (11.9inches) |
| | Width |
| Dimension | 170mm (6.69inches) |
| | Height |
| Dimension | 222mm (8.74inches) |
| | Approx Weight |
| Dimension | 20.2kg (44.5lbs) |
| | Terminal |
| Dimension | 1 |
| | Cell layout |
| Dimension | 0 |
| | Hold-Down |
| Dimension | B1 |
| | Case |
| Dimension | Black-PP Material |
| | Cover |
| Dimension | Black-PP Material |
| | Handle |
| Dimension | TS1 |

APPLICATIONS

- Car start
- EV/HEV
- Engine start

GENERAL FEATURES

- High capacity and high CCA
- Long life
- Advanced lead-calcium alloy technology, maintenance-free design
- Patented venting system bring less water loss and prevent acid leakage
- OE quality certification



*Values are subject to variation of +/- 5% in normal manufacturing processes.

Leoch International Technology Ltd.
www.leoch.com

Leoch Batteries Pte Ltd
www.leoch.sg

Leoch Battery Corporation
www.leochamericas.com

Leoch Europe S.A.
www.leoch.eu