

FLOODED BATTERY

95D31L (12V80Ah)



CHARACTERISTICS

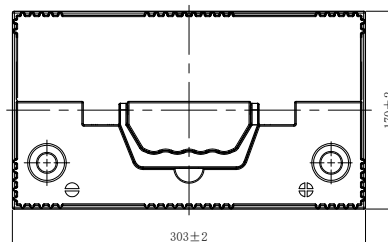
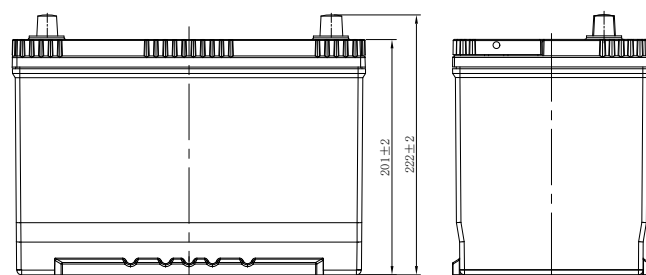
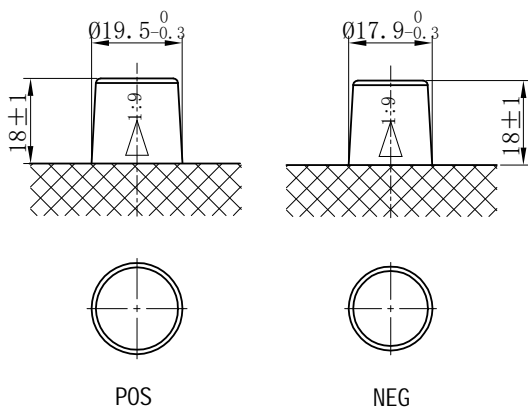
Item	Specifications
Nominal Voltage	12V
Nominal Capacity (20HR)	80Ah
Reserve Capacity	138min
Cold Cranking Amps@0°F (-18°C)	630A
Dimension	Length
	303mm (11.9inches)
	Width
Dimension	170mm (6.69inches)
	Height
Dimension	222mm (8.74inches)
	Approx Weight
Approx Weight	20.2kg (44.5lbs)
	Terminal
Terminal	1
Cell layout	0
Hold-Down	B1
Case	Black-PP Material
Cover	Black-PP Material
Handle	TS1

APPLICATIONS

- Car start
- EV/HEV
- Engine start

GENERAL FEATURES

- High capacity and high CCA
- Long life
- Advanced lead-calcium alloy technology, maintenance-free design
- Patented venting system bring less water loss and prevent acid leakage
- OE quality certification



*Values are subject to variation of +/- 5% in normal manufacturing processes.

Leoch International Technology Ltd.
www.leoch.com

Leoch Batteries Pte Ltd
www.leoch.sg

Leoch Battery Corporation
www.leochamericas.com

Leoch Europe S.A.
www.leoch.eu