

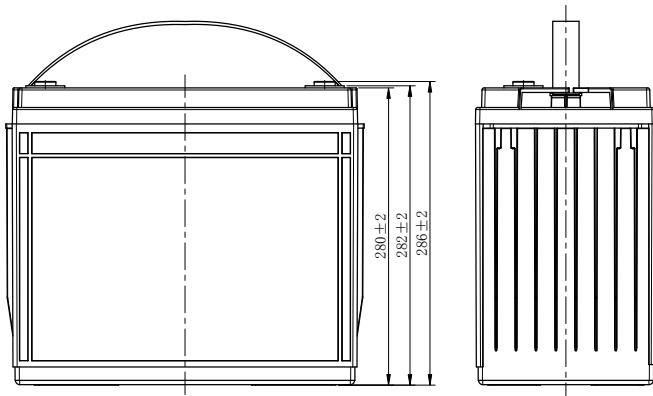
# INCOMPARABLE DEEP CYCLE AGM BATTERY

LDC12-145 (12V148Ah)



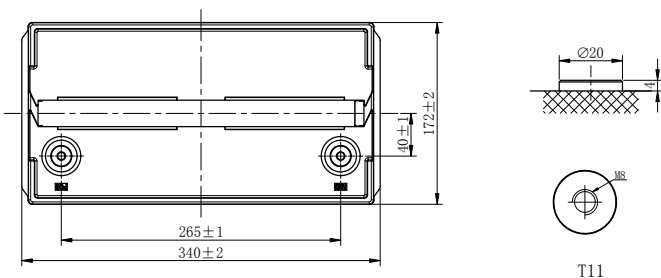
## CHARACTERISTICS

Item	Specifications	
Voltage	12V	
Dimension	Length	340mm (13.4inches)
	Width	172mm (6.77inches)
	Container Height	280mm (11.0inches)
	Total Height	286mm (11.3inches)
Approx Weight	42.5kg (93.7lbs)	
Terminal	T11(M8)	
Container Material	ABS	
Reserve Capacity	25A	308min
	56A	115min
	75A	88min
Capacity	20HR	148Ah
	5HR	122Ah
Operating Temp. Range	Discharge	-20~55°C (-4~131°F)
	Charge	0~40°C (32~104°F)
	Storage	-15~40°C (5~104°F)

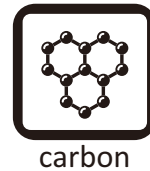


## APPLICATIONS

- Electric vehicle
- Golf cart
- Sightseeing
- Cleaning equipment
- AWP
- Mobility



T11



Note: Terminal Torque Values in-lb(Nm):97.28-130.0(11.0-14.7)

# INCOMPARABLE DEEP CYCLE AGM BATTERY

## LDC12-145 (12V148Ah)



### GENERAL FEATURES

#### Stable initial capacity

- PAM/NAM amount optimization
- 4BS crystal paste mixing & curing technology
- Double layer separator technology
- Improved design electrolyte S.G.

#### Less water loss

- PAM/NAM amount optimization
- New PAM/NAM recipe introduced
- Rare earth alloy

#### Solve NAM sulphation

- Carbon boost technology
- Pre-sulfate technology

#### Improved PSoC cycling

- Carbon boost technology
- Mix carbon boost technology
- Targeting for higher level through carbon technology

#### Delay PAM softening and shedding

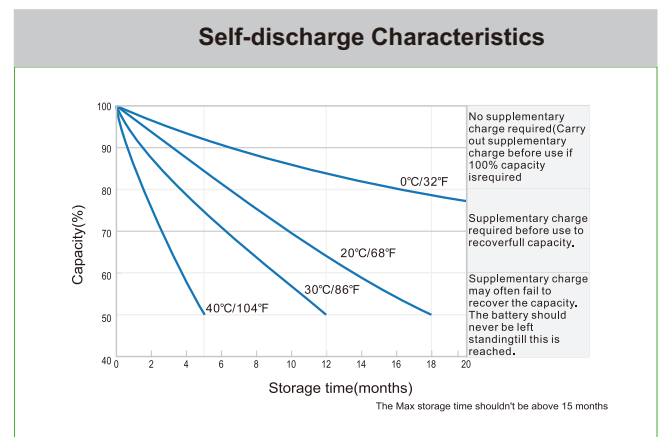
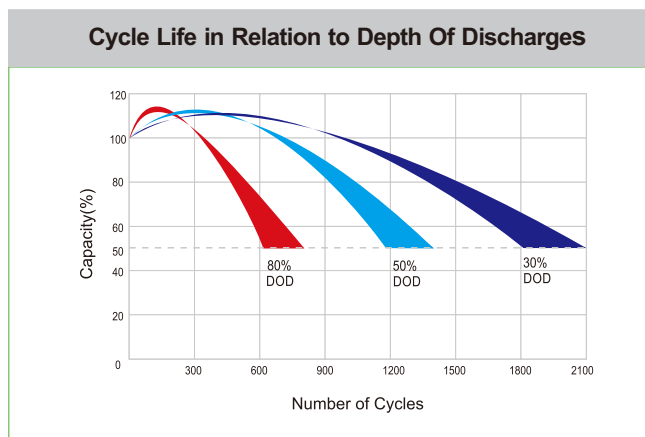
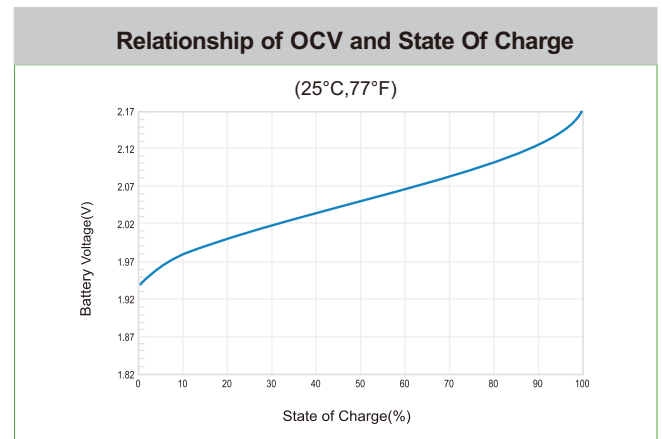
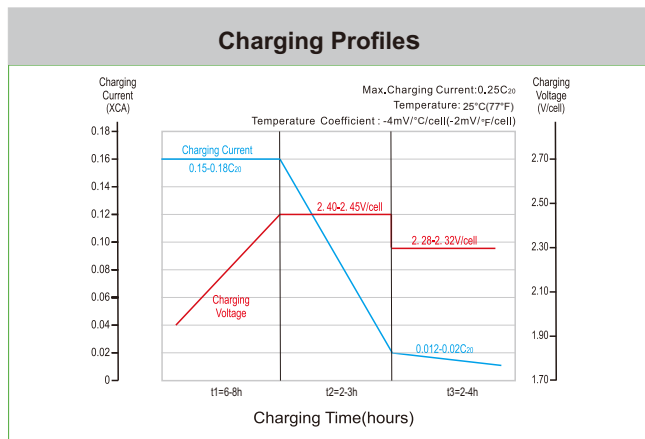
- Plate assembly pressure re-engineering
- 4BS crystal paste mixing & curing technology
- Higher paste density

#### Optimize electrolyte stratification

- Introduce AGM-GEL technology

#### Excellent deep cycle performance

- Plate assembly pressure re-engineering
- New PAM/NAM recipe introduced
- Gel electrolyte technology
- Rare earth alloy
- Double layer separator technology
- Lower acid filling temperature



Leoch International Technology Ltd.  
www.leoch.com

Leoch Batteries Pte Ltd  
www.leoch.sg

Leoch Battery Corporation  
www.leochamericas.com

Leoch Europe S.A.  
www.leoch.eu