

### Specification

|                                  |  |                                |
|----------------------------------|--|--------------------------------|
| Nominal Voltage                  | 2V   |                                |
| Capacity@30°C (86°F)             | 300.0Ah@5hr to 1.70V/cell  |                                |
| Dimensions                       | Length   | 77±2mm (3.03inches)            |
|                                  | Width  | 158±2mm (6.22inches)           |
|                                  | Container Height   | 495±2mm (19.49inches)          |
|                                  | Total Height (with Terminal)   | 527±2mm (20.75inches)          |
| Approx Weight                    | Without Electrolyte : 12.4kg (27.34lbs)<br>With Electrolyte : 16.6kg (36.60lbs)  |                                |
| Terminal Bolt                    | M10  |                                |
| Container Material               | PP   |                                |
| Rated Capacity                   | 300.0 AH/60.0A   | (5hr, 1.70V/cell, 30°C/86°F)   |
|                                  | 150.0 AH/300.0A  | (0.5hr, 1.50V/cell, 30°C/86°F) |
| Max. Discharge Current           | 2400A (5s)   |                                |
| Operating Temp. Range            | Discharge : -15~55°C (5~131°F)   |                                |
|                                  | Charge : 0~50°C (32~122°F)   |                                |
|                                  | Storage : 5~40°C (41~104°F)  |                                |
| Cycle life                       | ≥1200 cycles   |                                |
| Cycle Use                        | Initial Charging Current : less than 42.0A   |                                |
|                                  | Voltage  | : 2.40V~2.50V at 25°C(77°F)    |
|                                  | Temp. Coefficient  | : -5mV/°C                      |
| Capacity affected by Temperature | 40°C (104°F)   | 103%                           |
|                                  | 30°C (86°F)  | 100%                           |
|                                  | 0°C (32°F)   | 86%                            |
| Self Discharge                   | May be less than 8%Cs after storing 28 days at 20°C, and then a freshening charge is required.<br>For higher temperature, the time interval will be shorter. |                                |



### Applications

- ◆ forklift
- ◆ traction vehicles
- ◆ transportation vehicles
- ◆ tram cars
- ◆ buses
- ◆ gymnastic and recreation locations.

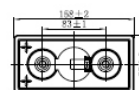
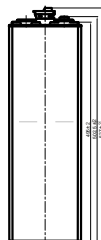
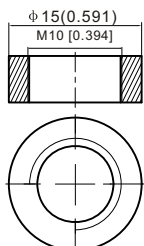
### Construction Features

- ◆ Nonwoven protective gauntlet, better elastic property, less pore size, less electrical resistance and higher air permeability.
- ◆ Flexible, fully isolated connector prevents any creeping current.
- ◆ Flip top plugs with special electrolyte level indication.
- ◆ Automatic refilling plugs are also available (according request).
- ◆ Imported microporous catercorner separator with advanced quality provides higher porosity and lower electrical resistance.
- ◆ Containers and lids are made of polypropylene (PP). The impact resistance is very good.
- ◆ Patented terminal sealing construction fully prevents plate growth and electrolyte leakage.

### Dimensions

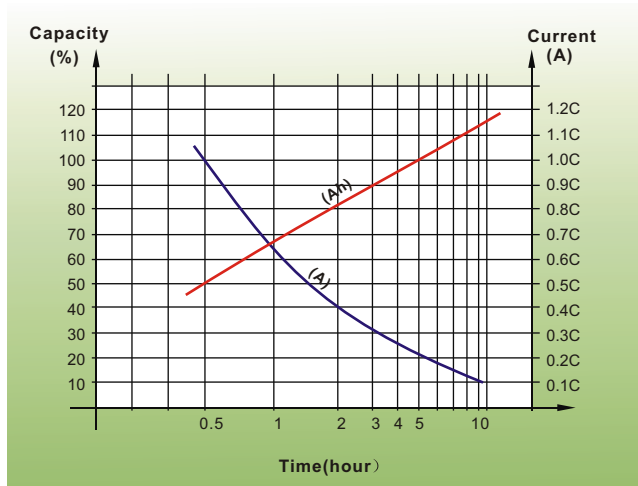
#### Terminal

Unit: mm [inches]

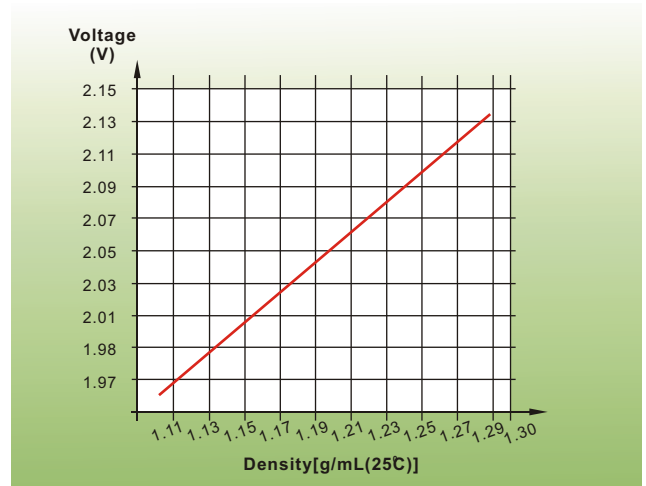


# Performance Characteristics

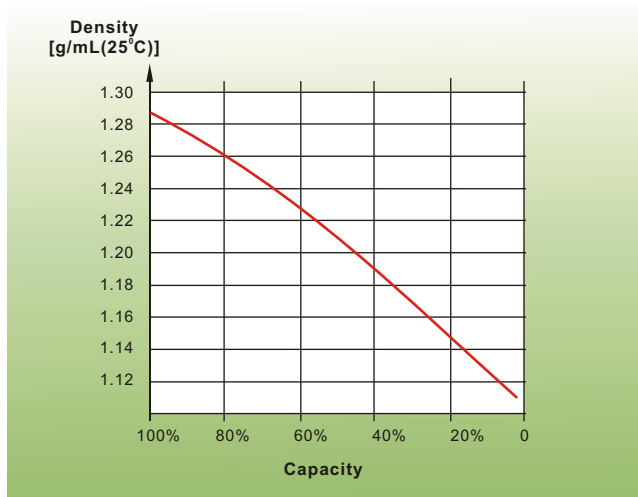
## Discharge Characteristics



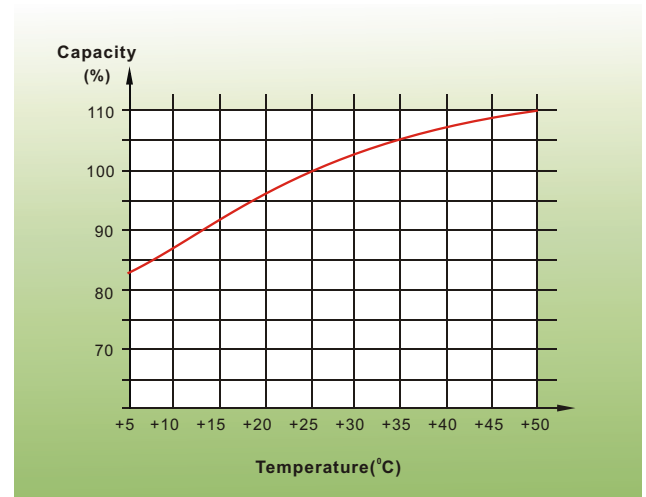
## Electrolyte Density in Relation to Voltage



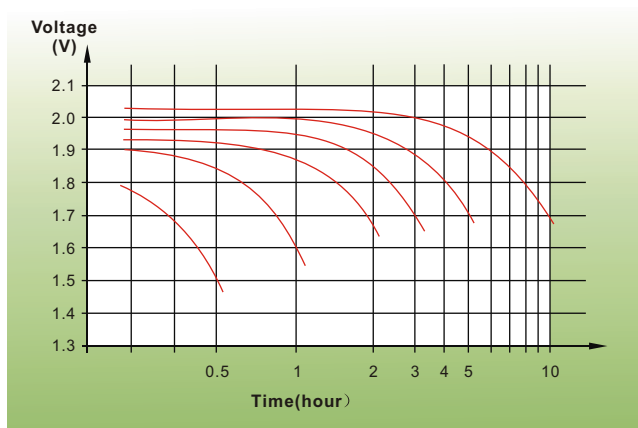
## Electrolyte Density in Relation to Capacity



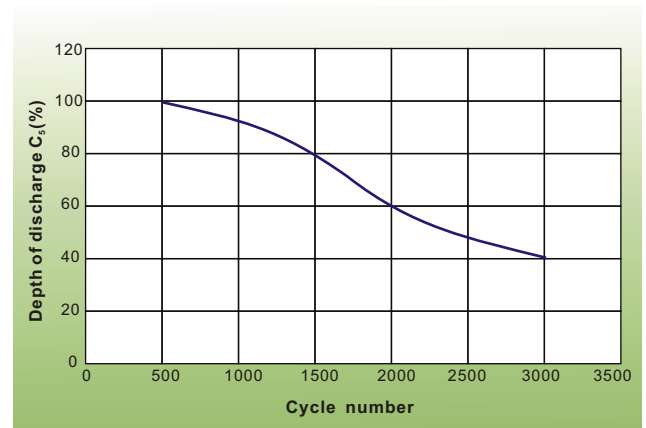
## Temperature in Relation to Battery Capacity



## Discharge Characteristics



## Cycle Life in Relation to Depth of Discharge



## Sales Office

### China sales office:

Add: 5th Floor, Xinbaohui Bldg., Nanhai Blvd.,  
Nanshan, Shenzhen, China. 518052  
Tel: +86-755-86036060 (100 lines)  
Fax: +86-755-26067269  
E-mail: export@leoch.com

### North America sales office:

Add: 19751 Descartes, Unit A,  
Foothill Ranch, CA 92610, USA  
Tel: 949-588-5853  
Fax: 949-588-5966  
E-mail: sales@leoch.com

### Europe sales office:

Add: 9B Wheatstone Park, Waterwells  
Business Park, Gloucester, GL2 2AQ. UK.  
Tel: +44(0) 1452 729428  
Fax: +44 (0)1452-690125  
E-mail: Sales.Europe@leoch.com