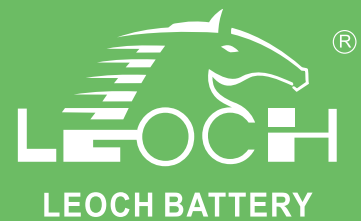




# LPGS Series-Gel Battery

## LPGS12-210(12V210Ah)

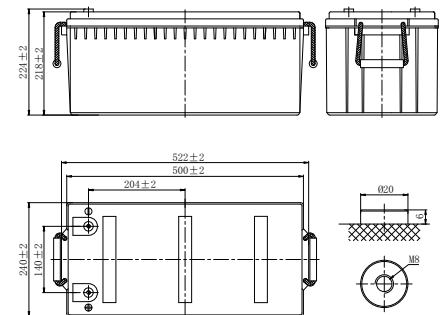


### Specifications

Rated Voltage	12V	
Nominal Capacity	210.0Ah (C <sub>20</sub> , 1.75V/cell)	
Dimension	Length	522±2mm (20.6 inches)
	Width	240±2mm (9.45 inches)
	Container Height	218±2mm (8.58 inches)
	Total Height	224±2mm (8.82 inches)
Approx Weight	62.5 Kg (137.8 lbs)	
Terminal	M8	
Container Material	ABS	
Rated Capacity (25°C)	226.0 Ah	(100hr, 2.26A, 1.80V/cell)
	222.5 Ah	(72hr, 3.09A, 1.80V/cell)
	210.0 Ah	(20hr, 10.5A, 1.75V/cell)
	191.0 Ah	(10hr, 19.1A, 1.80V/cell)
	125.9 Ah	(1hr, 125.9A, 1.75V/cell)
Max. Discharge Current	1910A (5s)	
Internal Resistance (25°C)	Approx 3.2mΩ	
Operating Temp. Range	Discharge : -20 ~ 55°C (-4 ~ 131°F)	
	Charge : 0 ~ 40°C (32 ~ 104°F)	
	Storage : -20 ~ 50°C (-4 ~ 122°F)	
Nominal Operating Temp. Range	25±3°C (77±5°F)	
Cycle Use	Initial Charging Current less than 47.5A. Voltage 14.1V~14.4V at 25°C(77°F)Temp. Coefficient -30mV/°C	
	Initial Charging Current less than 47.5A. Voltage 13.5V~13.8V at 25°C(77°F)Temp. Coefficient -20mV/°C	
Standby Use	Initial Charging Current less than 47.5A. Voltage 13.5V~13.8V at 25°C(77°F)Temp. Coefficient -20mV/°C	
Effect of temp. to Capacity	40°C (104°F)	103%
	25°C (77°F)	100%
	0°C (32°F)	86%
Self Discharge	LPGS series batteries may be stored for up to 6 months at 25°C(77°F) and then a freshening charge is required. For higher temperatures the time interval will be shorter.	



### Layout



### Constant Current Discharge (Amperes) at 25 °C (77°F)

F.V/Time	1h	2h	3h	4h	5h	6h	8h	10h	20h	48h	72h	100h
1.90V/cell	92.7	58.4	44.6	36.6	30.8	26.5	20.6	17.0	9.10	4.05	2.75	1.99
1.85V/cell	110.8	65.5	49.0	39.8	33.5	28.9	22.6	18.6	10.0	4.38	2.98	2.18
1.80V/cell	119.9	69.0	51.3	41.3	34.6	29.8	23.2	19.1	10.2	4.51	3.09	2.26
1.75V/cell	125.9	72.0	53.1	42.6	35.5	30.4	23.7	19.4	10.5	4.60	3.13	2.29

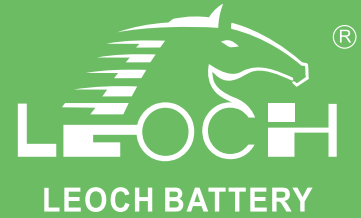
### Constant Power Discharge (Watts/cell) at 25 °C (77°F)

F.V/Time	1h	2h	3h	4h	5h	6h	8h	10h	20h	48h	72h	100h
1.90V/cell	181.4	115.2	88.7	72.8	61.8	53.3	41.3	34.0	18.1	8.11	5.49	3.99
1.85V/cell	214.9	128.0	96.4	78.6	66.8	57.3	44.9	37.0	20.0	8.78	5.98	4.38
1.80V/cell	230.1	133.8	100.6	79.2	68.5	59.0	46.2	37.9	20.4	9.00	6.17	4.51
1.75V/cell	240.9	139.1	103.6	83.4	69.9	60.1	46.9	38.5	20.9	9.20	6.26	4.59



# LPGS Series-Gel Battery

## LPGS12-210(12V210Ah)



### Applications

- Solar energy (wind energy) household system /communication / communication base station;
- Movable energy storage system;
- Solar traffic lights;
- Solar, wind and solar power generation;
- Emergency lighting system.

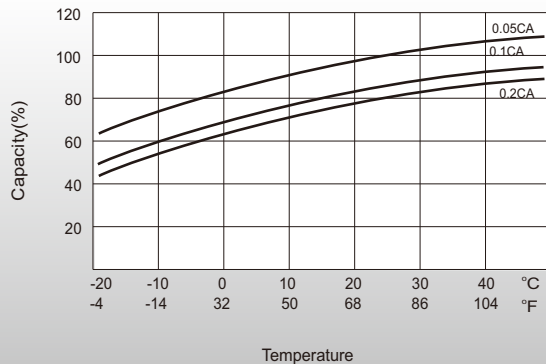
### General Features

- Adopted advantage AGM-GEL technology
- Operation temperature -20~55°C
- ≤3% Self discharge per month
- Fast recharge

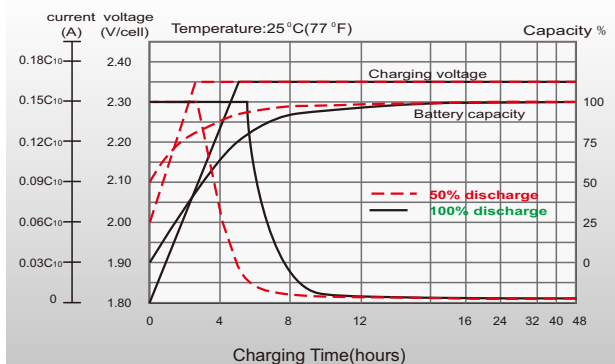
### Standards

- IEC 60896 Certified
- Classified as "Long Life" according to Eurobat
- Manufactured in Leoch® IATF16949, ISO 9001, ISO 14001 and ISO 45001 certified production facilities

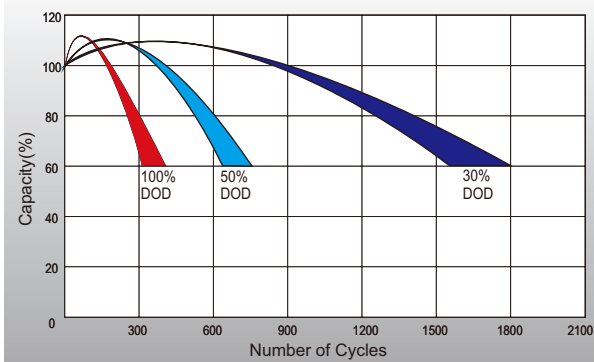
### Temperature Effects in Relation to Battery Capacity



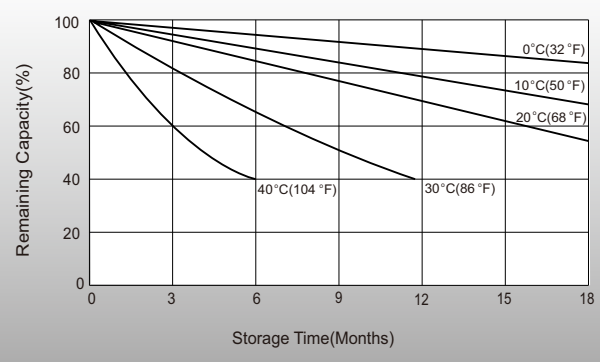
### Charging Characteristics



### Cycle Life in Relation to Depth of Discharge



### Self Discharge Characteristics



### Sales Offices Worldwide

#### China Sales Office

5th Floor, Xinbaohui Bldg., Nanhai Blvd.,  
Nanshan, Shenzhen, China. 518052  
Tel: +86-755-86036060 (100 lines)  
Fax: +86-755-26067269  
E-mail: export@leoch.com

#### HongKong Sales Office

Workshop C, 33/F, TML Tower, No. 3 Hoi Shing Road,  
Tsuen Wan, New Territories, Hong Kong  
Tel: +852 35786666  
Fax: +44 1452 690125  
E-mail: sales.hk@leoch.com

#### Singapore Sales Office

No. 1 Tech Park Crescent,  
Singapore 638131  
Tel: +65 68636078  
Fax: +65 6863 6079  
Email: sales.sg@Leoch.com

#### Australia Sales Office

2/29 Tarlington Place, Smithfield, NSW 2164  
Australia  
Tel: 02 9756 0950  
E-mail: sales.au@leoch.com

#### North America Sales Office

19751 Descartes  
Foothill Ranch, CA 92610, USA  
Tel: 949-588-5853  
Fax: 949-588-5966  
E-mail: sales@leoch.us  
Http://www.leoch.us

#### UK Sales Office

9B Wheatstone Court, Waterwells, Business Park,  
Gloucester, GL2-2AQ, UK United Kingdom  
Tel: +44(0) 1452 729428 / 1452 729696  
Fax: +44 1452 690125  
E-mail: Sales.Europe@leoch.com  
Http://www.leoch.eu

#### EMEA Sales Office

1 Deligiorgi St., 121 31 Athens,  
Greece  
Tel: +30 210 5760318 (2 lines)  
E-mail: support\_EMEA@leoch.com  
Http://www.leoch.eu

#### India Sales Office

Shed no.A-53(b), 2nd Stage of Peenya Industrial Area,  
Bangalore North Taluk, Bangalore-560058, India  
Tel: +91-80-23440018/23440019  
Fax: +91-80-23440017  
E-mail: indiasales@leoch.com



[Http://www.leoch.com](http://www.leoch.com)

© 2019 LEOCH. All rights reserved.

Trademarks and logos are the property of LEOCH and its affiliates unless otherwise noted.  
Subject to revisions without prior notice.

Publication No.: LB-LPGS12-210-PD-EN-V2.2-202004