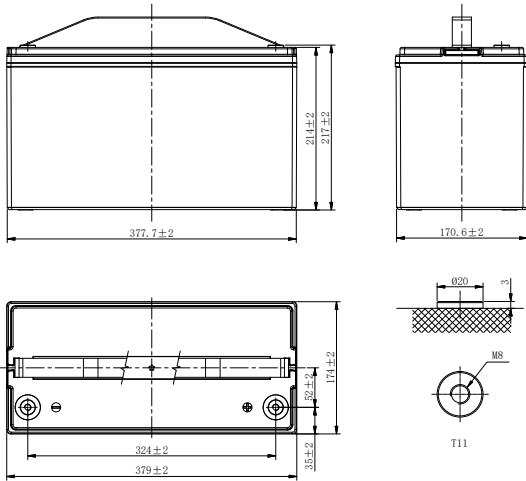


LHR SERIES-HIGH RATE

LHR12480W (12V480W)



CHARACTERISTICS

Item	Specifications	
Rated Voltage	12V	
Nominal Rate (25°C)	W_{15} 1.67V/cell	480W/cell
Nominal Capacity (25°C)	C_{10} 1.80V/cell	115.0Ah
Dimension	Length	379mm (14.9inches)
	Width	174mm (6.85inches)
	Container Height	214mm (8.43inches)
	Total Height	217mm (8.54inches)
Approx Weight	40.5kg (89.2lbs)	
Terminal	T11(M8)	
Container Material	ABS (UL94 HB or V-0 optional)	
Short-circuit current	2300A	
Internal Resistance (25°C)	Approx 3.2 mΩ (Fully charged)	
Operating Temp. Range	Discharge	-20~55°C (-4~131°F)
	Charge	-20~40°C (-4~104°F)
	Storage	-15~50°C (5~122°F)
Nominal Operating Temp. Range	25±3°C (77±5°F)	
Max.Charging Current (25°C)	0.25C	
Charge voltage (25°C)	Standby Use	Equalization Use
	2.25-2.30V/cell	2.30-2.40V/cell
Temp. Coefficient	-3mV/cell/°C	-4mV/cell/°C
	40°C (104°F)	106%
Effect of temp. to Capacity	25°C (77°F)	100%
	0°C (32°F)	86%
	Self Discharge	≤ 3% per month at 25°C (77°F)

DISCHARGE TABLE

Constant Current Discharge (Amperes) at 25°C (77°F)														
F.V/Time	5min	10min	15min	20min	30min	45min	1h	1.5h	2h	3h	4h	5h	8h	10h
1.85V/cell	254.0	200.0	166.0	139.1	107.0	82.6	63.3	46.5	38.0	28.3	22.4	18.9	13.1	11.2
1.80V/cell	312.0	238.0	194.0	160.5	122.0	85.4	66.7	47.9	40.2	29.2	23.2	19.7	13.4	11.5
1.75V/cell	392.0	279.0	220.0	179.3	134.0	95.0	72.0	49.8	41.8	29.9	24.0	20.2	13.5	11.6
1.70V/cell	432.0	300.0	233.0	189.4	141.0	98.0	73.9	51.9	42.8	30.5	24.6	20.7	13.7	11.7
1.67V/cell	444.0	306.0	237.0	194.5	142.0	100.5	75.8	53.3	43.8	31.2	24.9	21.0	13.8	11.8
1.60V/cell	471.0	320.0	246.0	199.3	147.0	102.2	77.1	55.1	44.7	32.0	25.4	21.4	13.9	11.9

Constant Power Discharge (Watts/cell) at 25°C (77°F)														
F.V/Time	5min	10min	15min	20min	30min	45min	1h	1.5h	2h	3h	4h	5h	8h	10h
1.85V/cell	532.6	424.0	350.4	273.3	220.8	147.2	132.5	90.1	73.9	55.3	43.9	37.3	26.0	22.2
1.80V/cell	641.1	491.9	403.2	314.5	250.0	169.3	144.3	92.3	77.9	56.9	45.4	38.6	26.4	22.8
1.75V/cell	748.1	552.6	449.3	350.4	269.6	188.7	151.3	95.7	80.6	57.9	46.7	39.6	26.6	22.9
1.70V/cell	819.5	595.1	472.3	368.4	283.4	198.4	154.3	99.2	82.1	59.0	47.6	40.4	27.0	23.0
1.67V/cell	855.8	609.6	480.0	374.4	288.0	201.6	154.6	101.3	83.7	60.0	48.1	40.7	27.2	23.4
1.60V/cell	901.0	626.1	486.7	379.6	292.0	204.4	155.9	104.0	84.9	61.2	49.0	41.4	27.3	23.5

LHR SERIES-HIGH RATE

LHR12480W (12V480W)



APPLICATIONS

- UPS
- Hospitals and Testing Laboratories
- Emergency Power Supply
- Industrial Process Control Facilities
- Banks and Financial Markets
- Data and Network Operation Centers

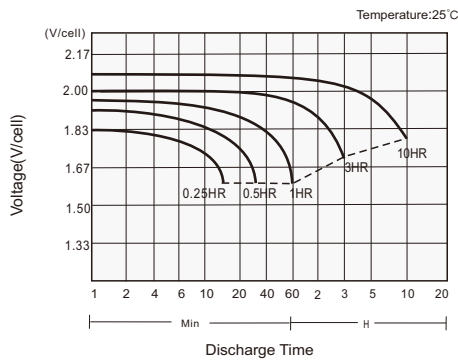
GENERAL FEATURES

- 12 years design life (25°C)
- Excellent high current performance - optimised for short discharge time
- Advanced AGM technology for superior high-rate power
- Long Life Alloy - minimizing grid growth, reducing gassing, and extending battery life
- Epoxy-sealed posts eliminate leaks
- Optimal energy density - saves floor space

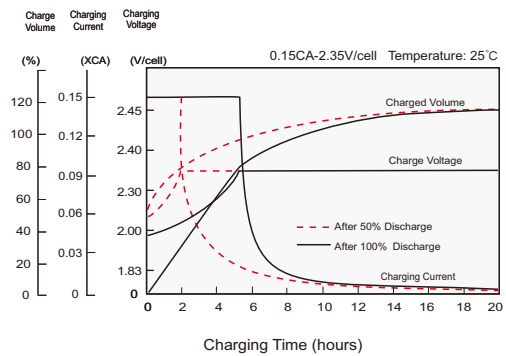
STANDARDS

- Compliance with IEC 60896 standards
- Classified as "Long Life" according to Eurobat
- CE Approved
- Manufactured in Leoch@IATF 16949, ISO 45001, ISO 9001 and ISO 14001 certified production facilities

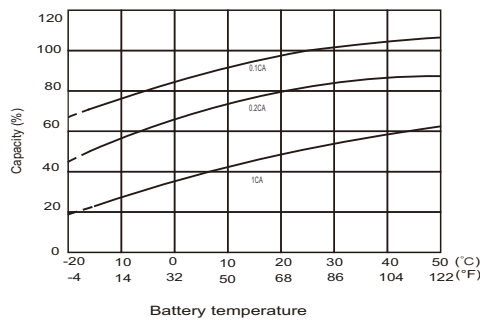
Discharge Characteristics



Charging Characteristics



Effects of Temperature on Capacity



Self Discharge Characteristics

