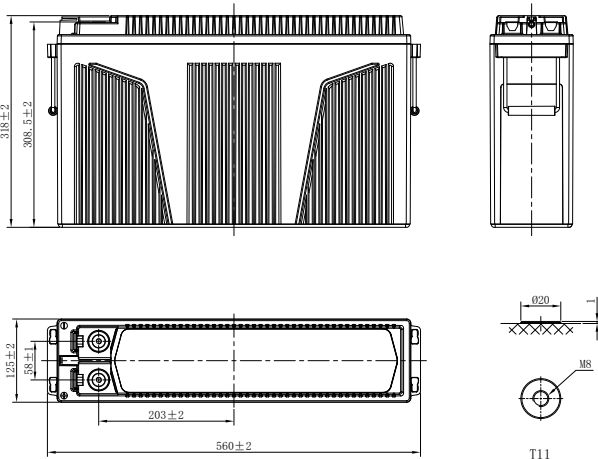
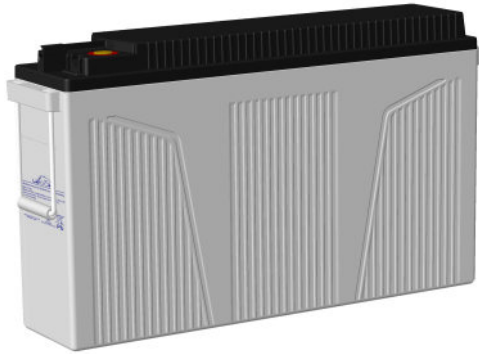


LHR SERIES-HIGH RATE

LHR12750FT (12V750W)



CHARACTERISTICS

Item	Specifications	
Rated Voltage	12V	
Nominal Rate (25°C)	$W_{15}, 1.67V/cell$	750W/cell
Nominal Capacity (25°C)	$C_{10}, 1.80V/cell$	190Ah
Dimension	Length	560mm (22.0inches)
	Width	125mm (4.92inches)
	Container Height	318mm (12.5inches)
	Total Height	318mm (12.5inches)
Approx Weight	64kg (141.1lbs)	
Terminal	T11(M8)	
Container Material	ABS (UL94 HB or V-0 optional)	
Short-circuit current	3800A	
Internal Resistance (25°C)	Approx 2.6 mΩ (Fully charged)	
Operating Temp. Range	Discharge	-20~55°C (-4~131°F)
	Charge	-20~40°C (-4~104°F)
	Storage	-15~50°C (5~122°F)
Nominal Operating Temp. Range	25±3°C (77±5°F)	
Max.Charging Current (25°C)	0.25C	
Charge voltage (25°C)	Float Charge	Equalization Charge
	2.25-2.30V/cell	2.30-2.40V/cell
Temp. Coefficient	-3mV/cell/°C	-4mV/cell/°C
	40°C (104°F)	106%
Effect of temp. to Capacity	25°C (77°F)	100%
	0°C (32°F)	86%
	Self Discharge	≤ 3% per month at 25°C (77°F)

DISCHARGE TABLE

Constant Current Discharge (Amperes) at 25°C (77°F)														
F.V/Time	5min	10min	15min	20min	30min	45min	1h	1.5h	2h	3h	4h	5h	8h	10h
1.85V/cell	432.6	351.8	302.6	238.0	173.9	134.9	104.1	78.1	62.8	46.8	37.0	31.3	21.6	18.5
1.80V/cell	493.3	400.4	343.9	269.8	196.7	140.6	106.4	82.9	66.5	48.9	38.3	32.5	22.1	19.0
1.75V/cell	509.7	413.1	354.1	277.1	201.2	147.8	111.2	86.2	69.0	50.6	39.6	33.5	22.3	19.1
1.70V/cell	554.1	447.8	382.4	298.7	216.9	153.5	115.7	88.3	70.7	51.7	40.6	34.2	22.6	19.2
1.67V/cell	606.7	488.8	416.4	324.7	234.9	158.2	120.1	90.6	72.4	52.8	41.1	34.7	22.9	19.5
1.60V/cell	628.2	505.5	429.4	333.0	240.6	163.4	123.2	92.3	73.8	54.1	42.0	35.3	23.0	19.6

Constant Power Discharge (Watts/cell) at 25°C (77°F)														
F.V/Time	5min	10min	15min	20min	30min	45min	1h	1.5h	2h	3h	4h	5h	8h	10h
1.85V/cell	807.9	661.8	573.0	452.7	332.3	259.4	201.4	151.3	122.2	91.4	72.5	61.6	42.9	36.8
1.80V/cell	906.3	742.4	642.8	507.8	372.8	268.5	204.7	159.9	128.7	95.2	75.0	63.8	43.7	37.7
1.75V/cell	920.0	753.6	652.5	515.5	378.5	280.6	212.9	165.4	133.1	98.2	77.2	65.4	44.0	37.8
1.70V/cell	983.5	805.6	697.5	551.0	404.6	289.4	220.4	168.8	135.7	99.9	78.7	66.7	44.6	38.1
1.67V/cell	1057.5	866.3	750.0	592.5	435.0	296.5	227.6	172.2	138.4	101.6	79.5	67.3	45.0	38.6
1.60V/cell	1072.3	878.4	760.5	600.8	441.1	303.5	231.6	174.2	140.2	103.6	80.9	68.4	45.2	38.7

LHR SERIES-HIGH RATE

LHR12750FT (12V750W)



APPLICATIONS

- UPS
- Hospitals and Testing Laboratories
- Emergency Power Supply
- Industrial Process Control Facilities
- Banks and Financial Markets
- Data and Network Operation Centers

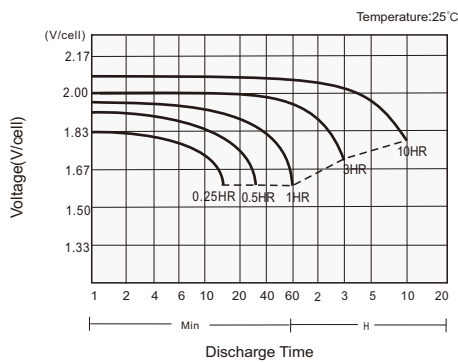
GENERAL FEATURES

- 12+ years design life (25°C)
- Excellent high current performance - optimised for short discharge time
- Advanced AGM technology for superior high-rate power
- Long Life Alloy - minimizing grid growth, reducing gassing, and extending battery life
- Optimal energy density - saves floor space
- Front access design for easy installation and maintenance

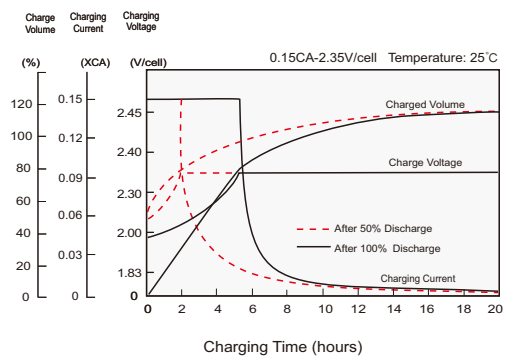
STANDARDS

- Compliance with IEC 60896 standards
- Classified as "Very Long Life" according to Eurobat
- CE, UL Approved
- Manufactured in Leoch@IATF 16949, ISO 45001, ISO 9001 and ISO 14001 certified production facilities

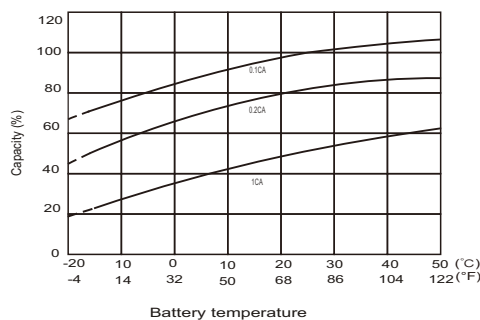
Discharge Characteristics



Charging Characteristics



Effects of Temperature on Capacity



Self Discharge Characteristics

