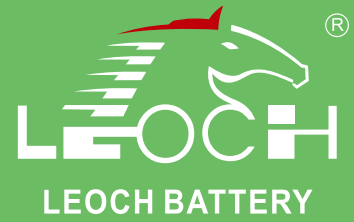




# LPC Series-Cycle Application

## LPC12-24(12V26Ah)

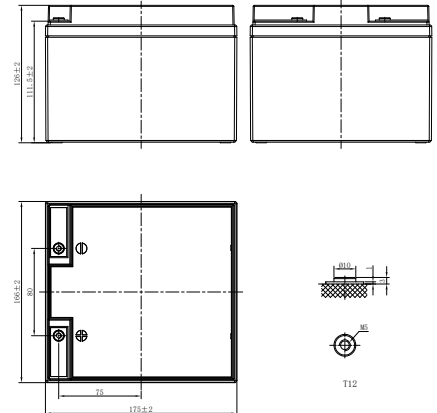


### Specifications

Rated Voltage	12V		
Rated Capacity(C <sub>20</sub> , 1.75V/cell)	26Ah		
Dimensions	Length	166±2mm (6.54 inches)	
	Width	175±2mm (6.89 inches)	
	Container Height	126±2mm (4.96 inches)	
	Total Height	126±2mm (4.96 inches)	
Approx Weight	8.20 Kg (18.1 lbs)		
Terminal	M5		
Container Material	ABS		
Nominal Capacity(25°C)	24.8Ah	(10hr, 2.48A, 1.75V/cell)	
	22.1Ah	(5hr, 4.42A, 1.75V/cell)	
	19.9Ah	(3hr, 6.63A, 1.75V/cell)	
	17.5Ah	(2hr, 8.75A, 1.75V/cell)	
	15.8Ah	(1hr, 15.8A, 1.70V/cell)	
Short Circuit Current	650A		
Internal Resistance(25°C)	≤11mΩ		
Operating Temp. Range	Discharge	-20 ~ 55°C (-4 ~ 131°F)	
	Charge	0 ~ 40°C (32 ~ 104°F)	
	Storage	-20 ~ 50°C (-4 ~ 122°F)	
Nominal Operating Temp. Range	25±3°C (77±5°F)		
Max. Charging Current(25°C)	6.5A		
Charge voltage(25°C)	Float	2.25~2.30V/cell	-3mV/cell/°C
	Cycle	2.35~2.45V/cell	-5mV/cell/°C
Effect of temp. to Capacity	40°C (104°F)	106%	
	25°C (77°F)	100%	
	0°C (32°F)	80%	
Self Discharge	≤3%/month @ 25°C		



### Layout



### Constant Current Discharge (Amperes) at 25 °C (77°F)

F.V/Time	1h	2h	3h	4h	5h	6h	8h	10h	20h
1.85V/cell	13.1	7.73	6.05	4.92	4.01	3.48	2.81	2.35	1.28
1.80V/cell	14.6	8.44	6.51	5.25	4.31	3.73	2.98	2.42	1.29
1.75V/cell	15.3	8.75	6.63	5.37	4.42	3.84	3.03	2.48	1.30
1.70V/cell	15.8	8.97	6.81	5.51	4.53	3.92	3.07	2.53	1.33

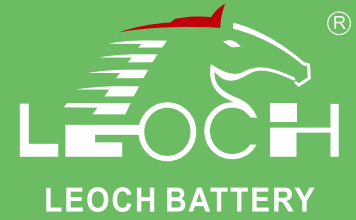
### Constant Power Discharge (Watts/cell) at 25 °C (77°F)

F.V/Time	1h	2h	3h	4h	5h	6h	8h	10h	20h
1.85V/cell	25.2	15.0	11.8	9.62	7.87	6.84	5.54	4.64	2.54
1.80V/cell	28.1	16.3	12.6	10.2	8.40	7.31	5.86	4.78	2.56
1.75V/cell	29.3	16.8	12.8	10.4	8.60	7.49	5.95	4.90	2.58
1.70V/cell	30.1	17.2	13.1	10.7	8.80	7.63	6.03	4.99	2.63



# LPC Series-Cycle Application

## LPC12-24(12V26Ah)



### Applications

- Electric tools
- Mobility Scooter
- Golf trolleys
- Portable lights and instruments
- Electric toys
- Portable power
- Electric wheelchair

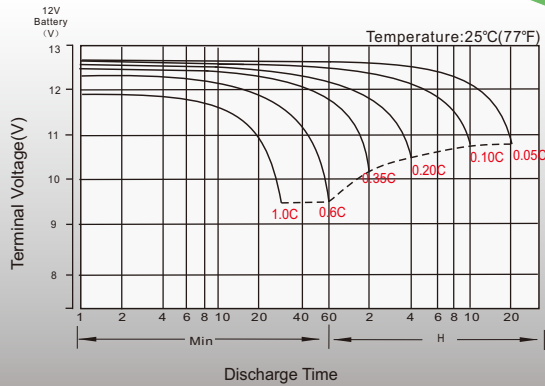
### General Features

- Good cyclic property. Enhanced overcharge endurance and overdischarge recovery property
- Using oxygen recombination technology: maintenance-free
- Lower acid density, excess of electrolyte and larger distance between plates to keep battery at low temperature and slow down plate grid corrosion speed
- Unique plate group configuration, high quality AGM separator and battery management system ensure battery with a longer service life

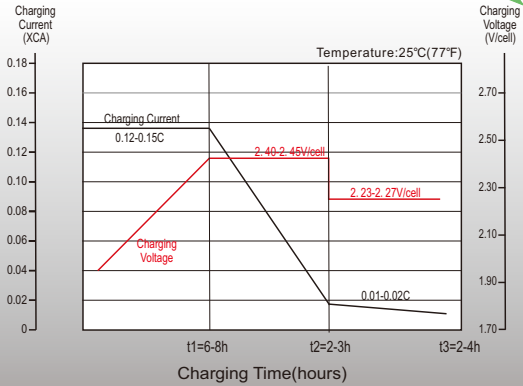
### Standards

- ACC. to BCI standards
- Manufactured in Leoch® IATF 16949, ISO 9001, ISO 14001 and ISO 45001 certified production facilities

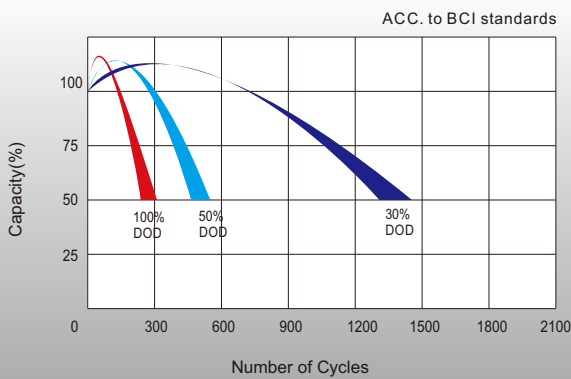
### Discharge Characteristics



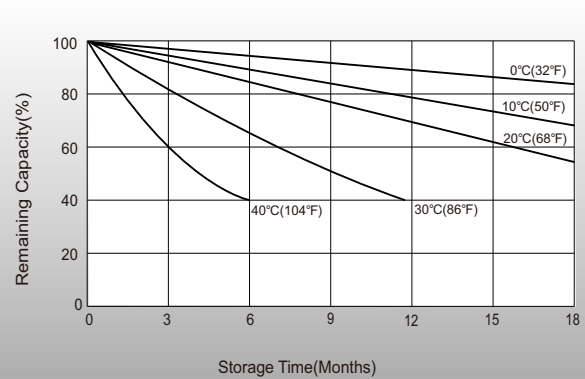
### Charging Characteristics



### Cycle Life in Relation to Depth of Discharge



### Self Discharge Characteristics



### Sales Offices Worldwide

#### China Sales Office

5th Floor, Xinbaohui Bldg., Nanhai Blvd.,  
Nanshan, Shenzhen, China. 518052  
Tel: +86-245-86036060 (100 lines)  
Fax: +86-245-24067249  
E-mail: export@leoch.com

#### HongKong Sales Office

Workshop C, 24/F, TML Tower, No. 3 Hoi Shing Road,  
Tsuen Wan, New Territories, Hong Kong  
Tel: +852 35786666  
Fax: +44 1452 690125  
E-mail: sales.hk@leoch.com

#### Singapore Sales Office

No. 1 Tech Park Crescent,  
Singapore 624131  
Tel: +65 68636078  
Fax: +65 6863 6079  
Email: sales.sg@Leoch.com

#### Australia Sales Office

2/29 Tarlington Place, Smithfield. NSW 2164  
Australia  
Tel: 02 9756 0950  
E-mail: sales.au@leoch.com

#### North America Sales Office

19751 Descartes  
Foothill Ranch, CA 92410, USA  
Tel: 949-588-5853  
Fax: 949-588-5966  
E-mail: sales@leoch.us  
Http://www.leoch.us

#### UK Sales Office

9B Wheatstone Court, Waterwells, Business Park,  
Gloucester, GL2-2AQ, UK United Kingdom  
Tel: +44(0) 1452 729248 / 1452 729696  
Fax: +44 1452 690125  
E-mail: Sales.Europe@leoch.com  
Http://www.leoch.eu

#### EMEA Sales Office

1 Deligiorgi St., 121 31 Athens,  
Greece  
Tel: +30 210 5760318 (2 lines)  
E-mail: support\_EMEA@leoch.com  
Http://www.leoch.eu

#### India Sales Office

Shed no. A-53(b), 2nd Stage of Peenya Industrial Area,  
Bangalore North Taluk, Bangalore-560058, India  
Tel: +91-80-23440018/23440019  
Fax: +91-80-23440017  
E-mail: indiasales@leoch.com



[Http://www.leoch.com](http://www.leoch.com)

© 2023 LEOCH. All rights reserved.

Trademarks and logos are the property of LEOCH and its affiliates unless otherwise noted.

Subject to revisions without prior notice E&OE.

Publication No.: LB-LPC12-24-PD-EN-V1.0-202301