

# MARINE AGM DUAL PURPOSE BATTERY

27M-580 (12V92Ah)



## CHARACTERISTICS

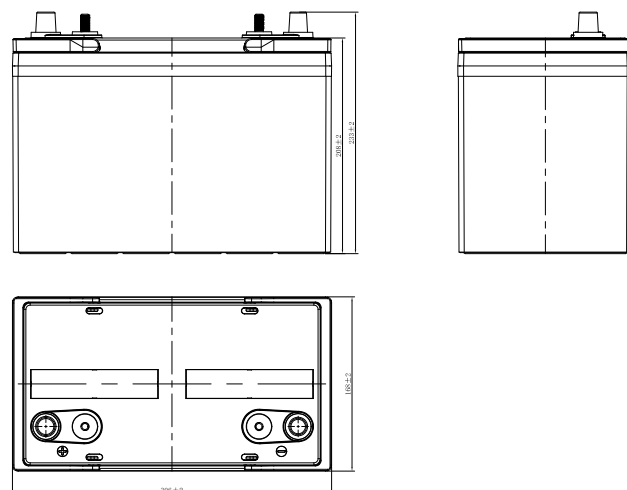
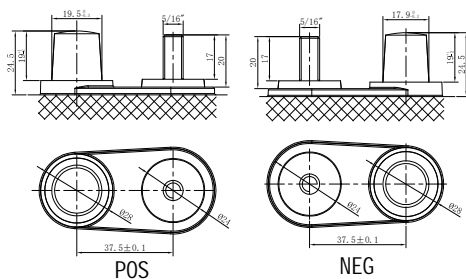
Item	Specifications	
Nominal Voltage	12V	
Nominal Capacity (20HR)	92Ah	
Reserve Capacity	175min	
Cold Cranking Amps@0°F (-18°C)	580A	
Dimension	Length	306mm (12.0inches)
	Width	168mm (6.61inches)
	Height	233mm (9.17inches)
Approx Weight	27.0kg (59.5lbs)	
Terminal	12	
Cell layout	1	
Hold-Down	B0	
Case	Black-ABS Material	
Cover	Black-ABS Material	
Handle	TS7	

## APPLICATIONS

- MARINE and RV
- Start and deep cycle

## GENERAL FEATURES

- Superior starting and cycling performance
- High capacity and high CCA
- 2x faster charge acceptance than conventional starter batteries
- 3x higher cycle life than conventional starter batteries
- Advanced Absorbed Glass Mat (AGM) technology



\*Values are subject to variation of +/- 5% in normal manufacturing processes.

Leoch International Technology Ltd.  
[www.leoch.com](http://www.leoch.com)

Leoch Batteries Pte Ltd  
[www.leoch.sg](http://www.leoch.sg)

Leoch Battery Corporation  
[www.leochamericas.com](http://www.leochamericas.com)

Leoch Europe S.A.  
[www.leoch.eu](http://www.leoch.eu)