

# EFB START-STOP BATTERY

EFB-D23R(Q-85) (12V60Ah)



## CHARACTERISTICS

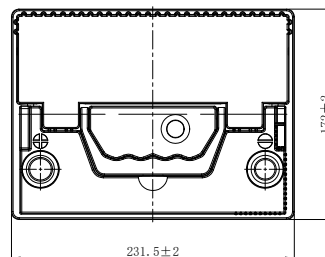
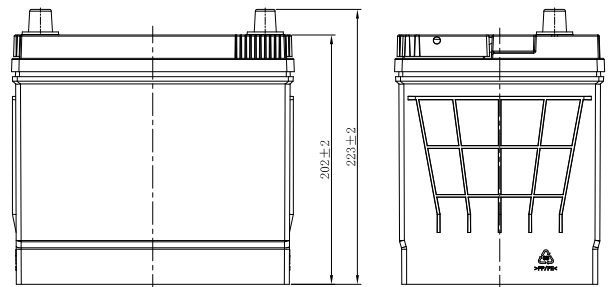
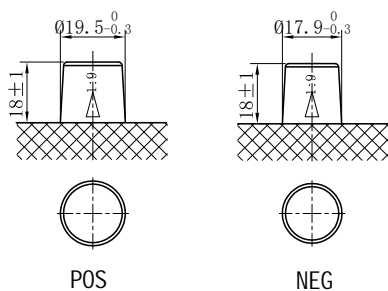
| Item                           | Specifications    |                     |
|--------------------------------|-------------------|---------------------|
| Nominal Voltage                | 12V               |                     |
| Nominal Capacity (20HR)        | 60Ah              |                     |
| Reserve Capacity               | 100min            |                     |
| Cold Cranking Amps@0°F (-18°C) | 610A              |                     |
| Dimension                      | Length            | 231.5mm(9.11inches) |
|                                | Width             | 172mm(6.77inches)   |
|                                | Height            | 223mm(8.78inches)   |
| Approx Weight                  | 17.2kg(37.9lbs)   |                     |
| Terminal                       | 1                 |                     |
| Cell layout                    | 1                 |                     |
| Hold-Down                      | B0                |                     |
| Case                           | Black-PP Material |                     |
| Cover                          | Black-PP Material |                     |
| Handle                         | TS1               |                     |

## APPLICATIONS

- Car with start-stop system
- EV/HEV
- Engine start

## GENERAL FEATURES

- High capacity and high CCA
- 2x Faster Charge Acceptance than conventional starter batteries
- 2x Higher Cycle Life than conventional starter batteries
- Strong alloy grids for rugged durability and improved tolerance in extreme temperature conditions
- OE quality certification



\*Values are subject to variation of +/- 5% in normal manufacturing processes.

Leoch International Technology Ltd.  
[www.leoch.com](http://www.leoch.com)

Leoch Batteries Pte Ltd  
[www.leoch.sg](http://www.leoch.sg)

Leoch Battery Corporation  
[www.leochamericas.com](http://www.leochamericas.com)

Leoch Europe S.A.  
[www.leoch.eu](http://www.leoch.eu)

Data above is recommended and the picture is only for battery effect display, Leoch reserve the final right of explanation.  
 © LEOCH. All rights reserved. Trademarks and logos are the property of LEOCH and its affiliates unless otherwise noted. Subject to revisions without prior notice. E&OE.

Publication No.:LB-EFB-D23R(Q-85)-PD-EN-V1.0-20250220