

PLH150FT(12V150AH)

PLH SERIES-LONG STANDBY LIFE

Applications

- All purpose
- Telecommunication
- Uninterruptable Power Supply (UPS)
- Electric Power System (EPS)
- Emergency backup powersupply
- Emergency light
- Railway signal
- Aircraft signal
- Alarm and security system
- Electronic apparatus and equipment
- Communication power supply
- DC power supply
- Auto control system
- Network Communication

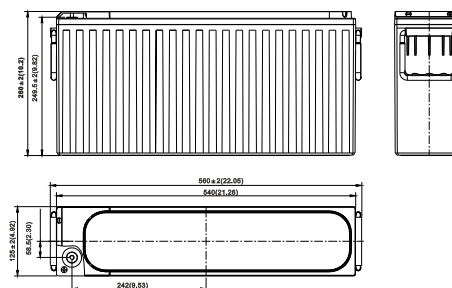


Key Features

- Design life up to 20 years
- High-rate performance
- Low internal resistance
- Low self-discharging rate
- High energy density
- Fast charging acceptance
- Heat sealed plastic container
- Flame retardant to UL94-V0
- Up to 2 years shelf life @25°C (77°F)

Layout

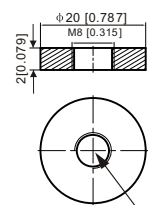
Unit: mm [inches]



Terminal

Terminal Model: T11

Unit: mm [inches]



Depth 18mm[0.71 inches]

PLH150FT(12V150AH) PLH SERIES-LONG STANDBY LIFE

Specification

Nominal Voltage	12V		
Rated Capacity (Ah)	10hr	150Ah @25 °C to 1.80V/cell	
	8hr	143.2Ah @25 °C to 1.75V/cell	
Dimension	Length	560±3mm (20.05 inches)	
	Width	125±2mm (4.92 inches)	
	Container Height	260±2mm (10.24 inches)	
	Total Height (with Terminal)	260±3mm (10.24 inches)	
Approx Weight	Approx 46.5Kg (102.3lbs)		
Terminal	T11		
Container Material	ABS		
Max. Discharge Current	1400A (5s)		
Internal Resistance	Approx 3.6mΩ		
Operating Temp. Range	Discharge	:-40~65°C (-40~149°F)	
	Charge	: 0~40°C (32~104°F)	
	Storage	:-20~40°C (-4~104°F)	
Capacity affected by Temperature	40°C (104°F)	103%	
	25°C (77°F)	100%	
	0°C (32°F)	86%	
Self Discharge	PLH series batteries can be stored up to 24 months at 25°C(77°F) and then a freshening charge is required. For higher temperatures the time interval will be shorter.		



Constant Current Discharge (Amperes) at 25 °C (77°F)

F.V/Time	10min	15min	20min	30min	45min	1h	2h	3h	4h	5h	8h	10h	20h
1.85V/cell	268.7	230.4	198.4	152.1	113.6	90.7	51.0	37.0	29.6	24.7	17.0	14.5	7.69
1.80V/cell	300.2	250.6	212.4	160.8	119.1	94.8	53.3	38.6	30.9	25.8	17.6	15.0	7.95
1.75V/cell	323.4	266.1	224.4	166.8	123.3	97.9	54.6	39.7	31.7	26.5	17.9	15.2	8.07
1.70V/cell	347.5	280.5	233.1	172.3	126.4	99.8	55.7	40.4	32.1	26.9	18.2	15.4	8.14
1.67V/cell	369.4	293.8	240.1	175.5	128.1	101.2	56.4	41.0	32.5	27.1	18.4	15.5	8.20
1.60V/cell	393.1	305.3	247.9	180.2	130.5	103.0	57.2	41.5	32.9	27.4	18.6	15.6	8.25

Constant Power Discharge (Watts/cell) at 25 °C (77°F)

F.V/Time	10min	15min	20min	30min	45min	1h	2h	3h	4h	5h	8h	10h	20h
1.85V/cell	509.7	440.8	381.8	296.1	224.4	179.7	102.0	74.1	59.6	49.9	34.4	29.5	15.7
1.80V/cell	560.4	473.0	404.7	311.0	233.9	187.0	105.9	77.0	61.9	51.8	35.5	30.4	16.2
1.75V/cell	597.7	497.6	423.9	320.0	240.6	191.8	108.0	78.8	63.3	53.0	36.1	30.8	16.4
1.70V/cell	632.4	518.2	436.0	327.8	245.2	194.5	109.6	79.9	64.0	53.6	36.6	30.9	16.5
1.67V/cell	665.6	537.3	445.7	332.5	247.3	196.5	110.6	80.8	64.5	54.0	36.9	31.1	16.5
1.60V/cell	696.6	550.1	455.0	338.1	250.0	198.2	111.3	81.3	64.9	54.2	37.1	31.2	16.6

China sales office:

Add:5th Floor,Xinbaohui Bldg.,Nanhai Blvd.,
Nanshan,Shenzhen, China. 518052
Tel:+ 86-755-86036060 (100 lines)
Fax: +86-755-26067269
E-mail:export@leoch.com
Http://www.leoch.com

HongKong sales office:

Add: 3910 Cable TV Tower, 9 Hoi Shing
Road, Tsuen Wan, N.T. Hong Kong.
Tel: +852 35786666
Fax: +852 21170016
E-mail: sales.hk@leoch.com

Singapore sales office:

Add: No.53, Ubi Avenue 1, #03-21 Paya
Ubi Industrial Park, Singapore 408934
Tel: +65 68416629
Fax: +65 68443210
Email: sales.sg@leoch.com

North America sales office:

Add: 19751 Descartes, Unit A,
Foothill Ranch, CA 92610, USA
Tel: 949-588-5853
Fax: 949-588-5966
E-mail: sales@leoch.us
Http://www.leoch.com

Europe sales office:

Add: 9B Wheatstone Park, Waterwells
Business Park, Gloucester, GL2 2AQ, UK.
Tel: +44(0) 1452 729428
Fax: +44 (0)1452-690125
E-mail: Sales.Europe@leoch.com