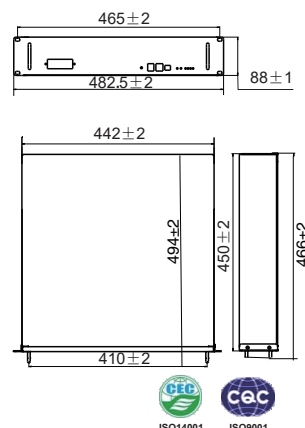


# LFELI-4840

- Intra-system balancing
- Flame retardant system to UL94V-0
- Good high temperature performance
- High cycle times and long service life
- Safe Lithium Iron Phosphate Technology
- Thousands of cycles, under normal conditions
- High energy density and conversion efficiency
- Environmental Friendly, without any heavy metals
- Complete with Battery Management System built-in
- Can use most standard VRLA chargers for this system
- Low self discharge rate of 2 years before required recharging
- Easy installation, can be in 19-inch standard cabinet or be wall-mounted
- Built-in automatic protection for over-charge, over-discharge & over-temperature conditions



## Dimensions-mm



## Characteristic

Item	Specification
Model	LFELI-4840
Rated Capacity (5HR)	40 Ah
Nominal Voltage	48.0 V
Discharge Ending Voltage	40.5 V
Charging Limited Voltage	54.0 V
Max. Charging Current	20.0 A
Max. Continue Discharging Current	35.0 A
Weight	Approx. 25 Kg
Display	Without a display screen
Parallel Connection	Do not support parallel connection
Dimensions (W*D*H) mm (inches)	442 (17.40") * 450 (17.72") * 88(3.46")
Cell Type	3.2V 4AH (15S10P) & Cylindrical cell
Design Life	More than 15 years
Cycle Life	More than 5000 cycles at 80% DOD
IP Class	IP30
Safety Certificate	/
Operating Temperature	Charging: 0 to +55 °C    Discharging: -20 to +60 °C    Storage: -20 to +60 °C

## Discharge Table

Constant Current Discharge Table (Amperes) at 25 °C							
Model	Voltage \ Time	1 h	2 h	3 h	4 h	5 h	10 h
LFELi-4840TS	End of discharge voltage 40.5 V	40A	19 A	13.3 A	10 A	8 A	4 A

Constant Power Discharge Table (Watts) at 25 °C							
Model	Voltage \ Time	1 h	2 h	3 h	4 h	5 h	10 h
LFELi-4840TS	End of discharge voltage 40.5 V	1920W	917 W	630 W	476 W	385 W	194 W



## Packing Dimension

■ L\*W\*H=552mm\*498mm\*164mm

## Packing List

- Before opening the package, please check if the packaging is damaged.
- After unpacking, please check if product appearance is damaged or there is missing parts. If so, please contact us.

NO.	Item	Description	Quantity
1	Battery Module	LFELi-4840TS	1 Nos.
2	Positive Cable	Size: AWG10; Length: 1000mm; Color: Red.	1 Nos.
3	Negative Cable	Size: AWG10; Length: 1000mm; Color: Black.	1 Nos.
4	User Manual	LD-LFeLi-48-UM-EN-V2.7-202003	1 Nos.

## Picture

1: Battery Module



2: Positive Cable



3: Negative Cable



4: User Manual

