

Lithium Battery - Golf Cart Series

GP48-105

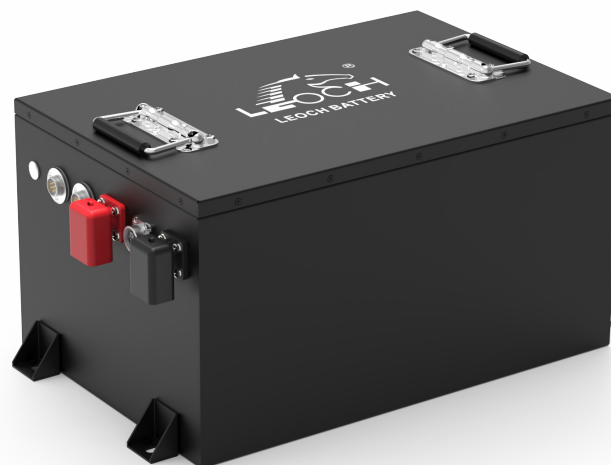


Features Of LiFePO4 Battery

- Long cycle life;
- High integration, small size, high energy density;
- Intelligent management of product usage status with high security;
- Environmental protection;
- Capable of 1C fast charging;

Application scenarios

- Golf Cart;
- Patrol vehicle;
- Venue vehicle
- Electric tricycle;
- Sightseeing Bus



Specification

Nominal Voltage	48V
Working Voltage	37.5-54.75V
Nominal Capacity	105Ah
Energy	5040Wh
Self Discharge	≤3% Per Month
IP Grade	IP65
Positive material	Lithium ironphosphate
Cell type	Prismatic
Combination method	105Ah, 1P15S
Weight	ABOUT 45.0KG
Dimension LxWxH	L527.6*W310*H263mm
Fixed size	L488*W203mm
Terminal Type	M8 Terminal Bolts, 12±2N·m
Shell type	Powder Coated Steel
Handle	YES
Storage Temp. short term	-20-45 °C @one month
Storage Temp. long term	0~35 °C @one year
Cycle Life	5000 cycles
Heating function	No
Cooling type	No
Insulation	20MΩ/1000VDC, @25±5 °C, RH50%
Certification(Program)	UN38.3

Charging

Charging Freeze Protection	< 0 °C
Recom. Charging Current	50A
Upper limit voltage	54.75V
Charging Temp. Range	0~65 °C

DisCharging

Max Continuous Discharge	105A
Max Discharge current	380A@30S
Lower limit voltage	37.5V
BMS Voltage Recovery	42V
Discharge Temp. Range	-35~65 °C

Function (optional)

(CAN/RS485), Bluetooth, 4G, Screen, Charger

Physical Dimension-mm

